



## UK Office

### Everest Biotech Ltd

Cherwell Innovation Centre  
77 Heyford Park  
Upper Heyford  
Oxfordshire  
OX25 5HD  
UK

Enquiries:

[info@everestbiotech.com](mailto:info@everestbiotech.com)

Sales:

[sales@everestbiotech.com](mailto:sales@everestbiotech.com)

Tech support:

[support@everestbiotech.com](mailto:support@everestbiotech.com)

Tel: +44 (0)1869 238326

Fax: +44 (0)1869 238327

## US Office

### Everest Biotech c/o Abcore

405 Maple Street, Suite A106  
Ramona,  
CA 92065  
USA

Inquiries:

[info@everestbiotech.com](mailto:info@everestbiotech.com)

Sales:

[usasales@everestbiotech.com](mailto:usasales@everestbiotech.com)

Tech support:

[support@everestbiotech.com](mailto:support@everestbiotech.com)

Tel: 888-320-4628 (toll-free)

Fax: 888-841-9041

[www.everestbiotech.com](http://www.everestbiotech.com)

**Research Use Only. Not for  
diagnostic or therapeutic use.**

## EB06363 - Goat Anti-Cdc42-binding kinase alpha Antibody

Size: 100µg specific antibody in 200µl



### Target Protein

**Principal Names:** CDC42BPA, MRCK, MRCKA, PK428, FLJ23347, KIAA0451, CDC42 binding protein kinase alpha (DMPK-like), ser-thr protein kinase PK428, myotonic dystrophy kinase-related CDC42-binding protein kinase alpha, Ser-Thr protein kinase related to the myotonic dystrophy protein kinase, DKFZp686L1738, CDC42 binding protein kinase beta

**Official Symbol:** CDC42BPA

**Accession Number(s):** NP\_055641.3; NP\_003598.2

**Human GeneID(s):** [8476](#)

**Non-Human GeneID(s):** 226751 (mouse), 114116 (rat)

**Important Comments:** This antibody is expected to recognise both reported Human isoforms (NP\_055641.3 and NP\_003598.2).

### Immunogen

Peptide with sequence SGEVRLRQLEQFI-C, from the N Terminus of the protein sequence according to NP\_055641.3; NP\_003598.2.

Please note the [peptide](#) is available for sale.

### Purification and Storage

Purified from goat serum by ammonium sulphate precipitation followed by antigen affinity chromatography using the immunizing peptide.

Supplied at 0.5 mg/ml in Tris saline, 0.02% sodium azide, pH7.3 with 0.5% bovine serum albumin.

Aliquot and store at -20°C. Minimize freezing and thawing.

### Applications Tested

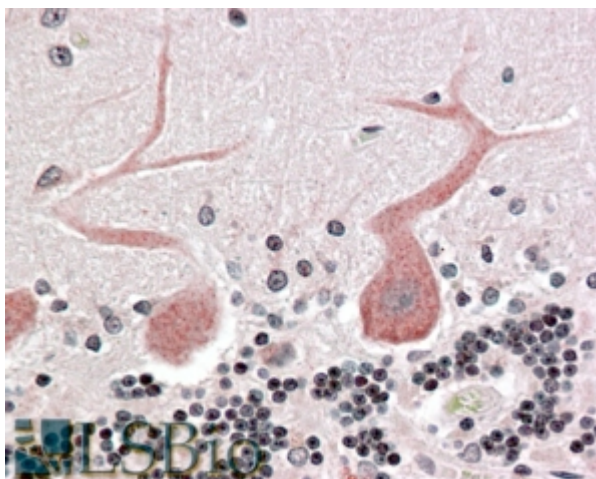
**Peptide ELISA:** antibody detection limit dilution 1:16000.

**IHC:** Paraffin embedded Human Brain (Cerebellum) and Small Intestine (submucosal plexus). Recommended concentration: 3.75µg/ml.

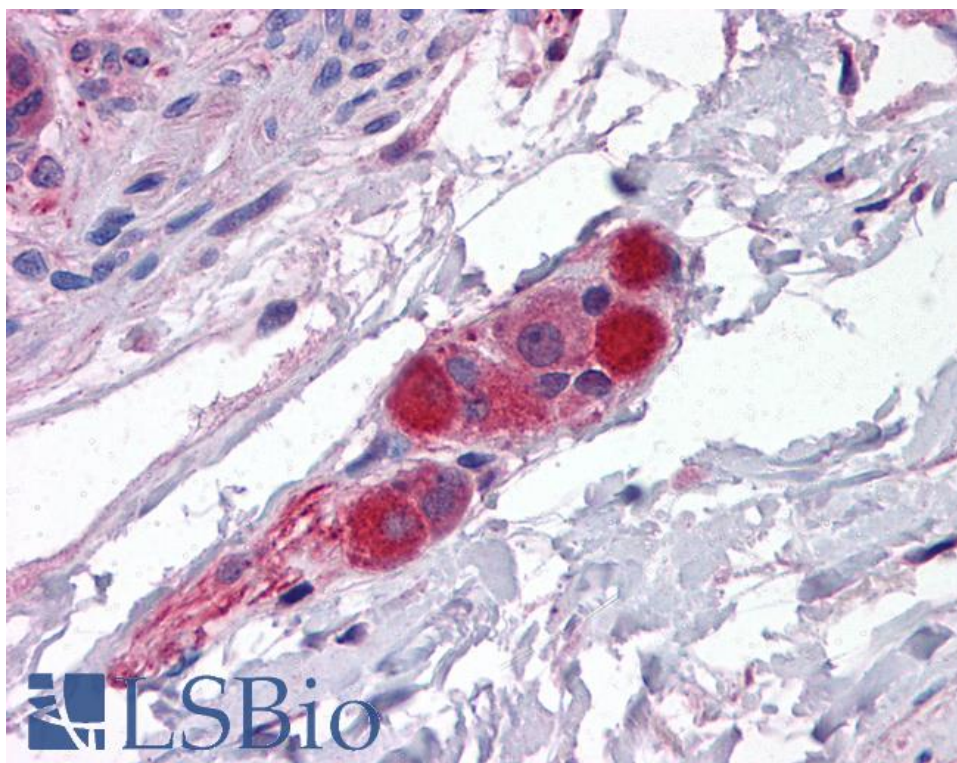
### Species Reactivity

**Tested:** Human

**Expected from sequence similarity:** Human, Mouse, Rat, Dog, Cow



EB06363 (3.75µg/ml) staining of paraffin embedded Human Cerebellum. Steamed antigen retrieval with citrate buffer pH 6, AP-staining.



EB06363 (3.75µg/ml) staining of paraffin embedded Human Small Intestine. Steamed antigen retrieval with citrate buffer pH 6, AP-staining.