



UK Office

Everest Biotech Ltd

Cherwell Innovation Centre
77 Heyford Park
Upper Heyford
Oxfordshire
OX25 5HD
UK

Enquiries:

info@everestbiotech.com

Sales:

sales@everestbiotech.com

Tech support:

support@everestbiotech.com

Tel: +44 (0)1869 238326

www.everestbiotech.com

**Research Use Only. Not for
diagnostic or therapeutic use.**

EB11799 - Goat Anti-CDC48/ VCP / YDL126C (baker's yeast, aa128-142) Antibody

Size: 100µg specific antibody in 200µl



Target Protein

Principal Names: CDC48, CDC48p, YDL126C, VCP, transitional endoplasmic reticulum ATPase, valosin containing protein, p97, TERA

Official Symbol: CDC48

Accession Number(s): NP_010157.1

Important Comments: This antibody may cross react in many other species.

Immunogen

Peptide with sequence C-PIADTIEGITGNLFD, from the internal region of the protein sequence according to NP_010157.1.

Please note the [peptide](#) is available for sale.

Purification and Storage

Purified from goat serum by ammonium sulphate precipitation followed by antigen affinity chromatography using the immunizing peptide.

Supplied at 0.5 mg/ml in Tris saline, 0.02% sodium azide, pH7.3 with 0.5% bovine serum albumin.

Aliquot and store at -20°C. Minimize freezing and thawing.

Applications Tested

Peptide ELISA: antibody detection limit dilution 1:128000.

Western blot: Approx 100kDa band observed in lysates of cell line HeLa (calculated MW of 92.0kDa according to NP_010157.1). Recommended concentration: 0.3-1µg/ml.

IHC: Paraffin embedded Human Prostate. Recommended concentration: 5µg/ml.

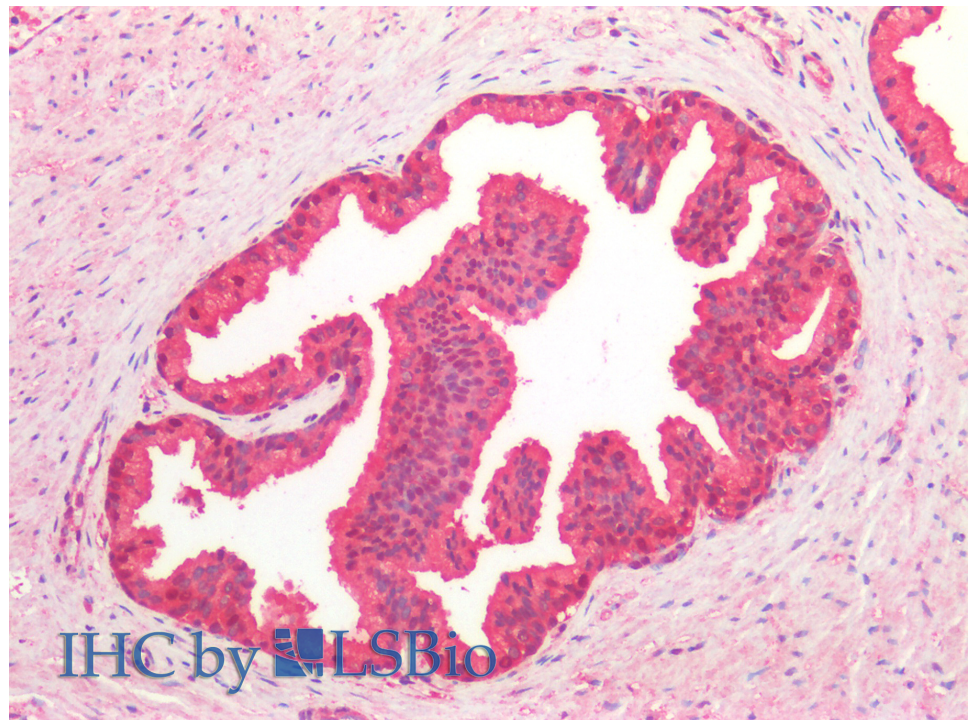
Species Reactivity

Tested: Human

Expected from sequence similarity: Saccharomyces cerevisiae S288c, Human, Mouse, Rat, Dog, Cow



EB11799 (0.3 μ g/ml) staining of HeLa lysate (35 μ g protein in RIPA buffer). Primary incubation was 1 hour.
Detected by chemiluminescence.



EB11799 (5 μ g/ml) staining of paraffin embedded Human Prostate. Steamed antigen retrieval with citrate buffer
Ph 6, AP-staining.