



UK Office

Everest Biotech Ltd

Cherwell Innovation Centre
77 Heyford Park
Upper Heyford
Oxfordshire
OX25 5HD
UK

Enquiries:

info@everestbiotech.com

Sales:

sales@everestbiotech.com

Tech support:

support@everestbiotech.com

Tel: +44 (0)1869 238326

Fax: +44 (0)1869 238327

US Office

Everest Biotech c/o Abcore

405 Maple Street, Suite A106
Ramona,
CA 92065
USA

Inquiries:

info@everestbiotech.com

Sales:

usasales@everestbiotech.com

Tech support:

support@everestbiotech.com

Tel: 888-320-4628 (toll-free)

Fax: 888-841-9041

www.everestbiotech.com

**Research Use Only. Not for
diagnostic or therapeutic use.**

EB05267 - Goat Anti-CDCP1 (isoform 1: C term) Antibody

Size: 100µg specific antibody in 200µl



Target Protein

Principal Names: CDCP1, CUB domain containing protein 1, HGNC:24357, CD318, SIMA135, TRASK, CUB domain-containing protein 1, transmembrane and associated with src kinases

Official Symbol: CDCP1

Accession Number(s): NP_073753.3

Human GeneID(s): [64866](#)

Important Comments: This antibody is expected to recognize isoform 1 (NP_073753.3) only.

Immunogen

Peptide with sequence C-PLLNTQEPMEPAE, from the C Terminus of the protein sequence according to NP_073753.3.

Please note the [peptide](#) is available for sale.

Purification and Storage

Purified from goat serum by ammonium sulphate precipitation followed by antigen affinity chromatography using the immunizing peptide.

Supplied at 0.5 mg/ml in Tris saline, 0.02% sodium azide, pH7.3 with 0.5% bovine serum albumin.

Aliquot and store at -20°C. Minimize freezing and thawing.

Applications Tested

Peptide ELISA: antibody detection limit dilution 1:32000.

Western blot: Approx 90kDa band observed in Human Colon lysates (calculated MW of 92.3kDa according to NP_073753.3). Recommended concentration: 1-3µg/ml. An additional band of unknown identity was also consistently observed at 200kDa. This band was successfully blocked by incubation with the immunising peptide. Primary incubation was 1 hour.

IHC: Paraffin embedded Human Prostate. Recommended concentration: 5µg/ml.

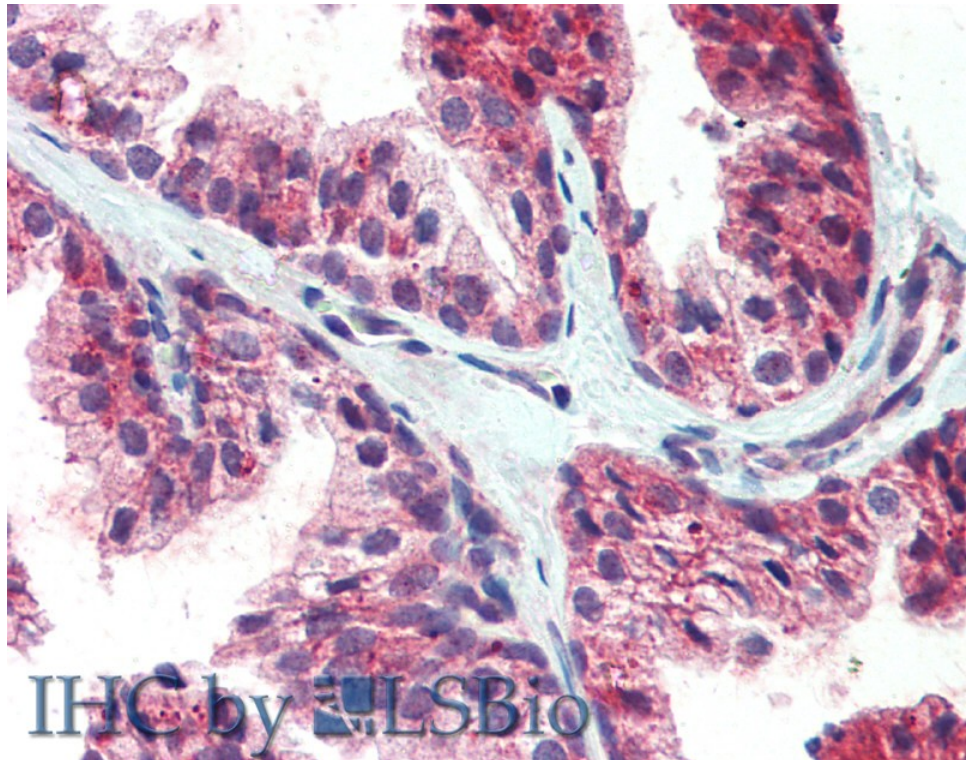
Species Reactivity

Tested: Human

Expected from sequence similarity: Human



EB05267 (1µg/ml) staining of Human Colon lysate (35µg protein in RIPA buffer). Detected by chemiluminescence.



EB05267 (5µg/ml) staining of paraffin embedded Human Prostate. Steamed antigen retrieval with citrate buffer pH 6, AP-staining.