



## UK Office

### Everest Biotech Ltd

Cherwell Innovation Centre  
77 Heyford Park  
Upper Heyford  
Oxfordshire  
OX25 5HD  
UK

Enquiries:

[info@everestbiotech.com](mailto:info@everestbiotech.com)

Sales:

[sales@everestbiotech.com](mailto:sales@everestbiotech.com)

Tech support:

[support@everestbiotech.com](mailto:support@everestbiotech.com)

Tel: +44 (0)1869 238326

[www.everestbiotech.com](http://www.everestbiotech.com)

**Research Use Only. Not for  
diagnostic or therapeutic use.**

## EB11206 - Goat Anti-CDH1 (aa662-675) Antibody

Size: 100µg specific antibody in 200µl



### Target Protein

**Principal Names:** Arc-1, cadherin 1, E-cadherin (epithelial), cadherin 1, type 1, E-cadherin (epithelial), cadherin-1, calcium-dependent adhesion protein, epithelial, CAM 120/80, CD324, CDHE, cell-CAM 120/80, ECAD, E-Cadherin, epithelial cadherin, LCAM, UVO, uvomorulin, CDH1

**Official Symbol:** CDH1

**Accession Number(s):** NP\_004351.1

**Human GeneID(s):** [999](#)

**Non-Human GeneID(s):** 83502 (rat)

**Important Comments:** The immunizing peptide represents part of the extracellular domain.

### Immunogen

Peptide with sequence C-DYKINLKLMDNQNK, from the internal region of the protein sequence according to NP\_004351.1.

Please note the [peptide](#) is available for sale.

### Purification and Storage

Purified from goat serum by ammonium sulphate precipitation followed by antigen affinity chromatography using the immunizing peptide.

Supplied at 0.5 mg/ml in Tris saline, 0.02% sodium azide, pH7.3 with 0.5% bovine serum albumin.

Aliquot and store at -20°C. Minimize freezing and thawing.

### Applications Tested

**Peptide ELISA:** antibody detection limit dilution 1:16000.

**Western blot:** Approx 85kDa band observed in Human Kidney lysates and in Pig Colon, Kidney and Lung lysates and ~90kDa in Mouse and Rat Lung lysates (calculated MW of 97.5kDa according to NP\_004351.1). Recommended concentration: 0.3-1µg/ml. Primary incubation was 1 hour.

**IHC:** Paraffin embedded Human Thyroid. Recommended concentration: 5µg/ml.

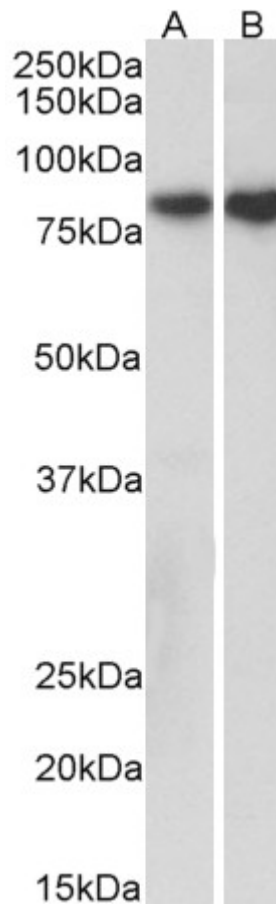
### Species Reactivity

**Tested:** Human, Mouse, Rat, Pig

**Expected from sequence similarity:** Human, Rat, Dog, Pig



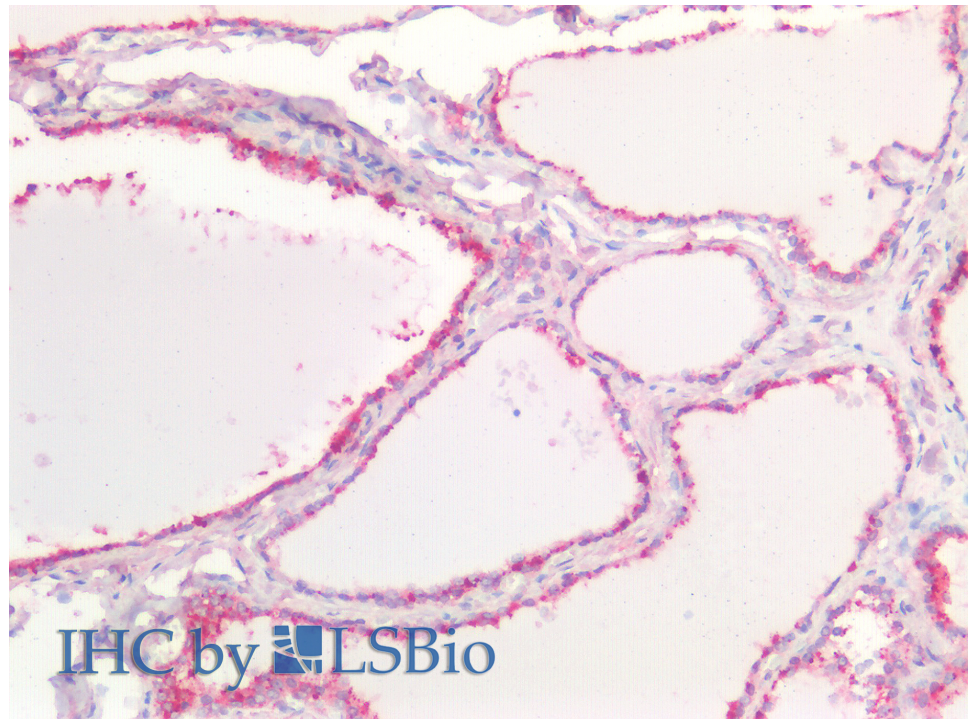
EB11206 (0.5 $\mu$ g/ml) staining of Human Kidney lysate (35 $\mu$ g protein in RIPA buffer). Detected by chemiluminescence.



EB11206 (0.3 $\mu$ g/ml) staining of Pig Kidney (A) and Colon (B) lysates (35 $\mu$ g protein in RIPA buffer). Detected by chemiluminescence.



EB11206 (0.3µg/ml) staining of Mouse Lung (A) and Rat Lung (B) lysates (35µg protein in RIPA buffer).  
Detected by chemiluminescence.



EB11206 (5µg/ml) staining of paraffin embedded Human Thyroid. Steamed antigen retrieval with citrate buffer pH 6, AP-staining.