



UK Office

Everest Biotech Ltd

Cherwell Innovation Centre
77 Heyford Park
Upper Heyford
Oxfordshire
OX25 5HD
UK

Enquiries:

info@everestbiotech.com

Sales:

sales@everestbiotech.com

Tech support:

support@everestbiotech.com

Tel: +44 (0)1869 238326

Fax: +44 (0)1869 238327

US Office

Everest Biotech c/o Abcore

405 Maple Street, Suite A106
Ramona,
CA 92065
USA

Inquiries:

info@everestbiotech.com

Sales:

usasales@everestbiotech.com

Tech support:

support@everestbiotech.com

Tel: 888-320-4628 (toll-free)

Fax: 888-841-9041

www.everestbiotech.com

**Research Use Only. Not for
diagnostic or therapeutic use.**

EB12229 - Goat Anti-CDH13 / H cadherin (aa285-297) Antibody

Size: 100µg specific antibody in 200µl



Target Protein

Principal Names: CDH13, cadherin 13, H-cadherin (heart), CDHH, P105, H-cadherin, T-cad, T-cadherin, cadherin-13, heart cadherin

Official Symbol: CDH13

Accession Number(s): NP_001248.1; NP_001207417.1; NP_001207418.1, NP_001207419.1

Human GeneID(s): [1012](#)

Non-Human GeneID(s): 12554 (mouse), 192248 (rat)

Important Comments: This antibody is expected to recognize isoform 1, 2, 3 and 4 (NP_001248.1; NP_001207417.1; NP_001207418.1; NP_001207419.1).

Immunogen

Peptide with sequence C-NIRQQTPDKPSPN, from the internal region of the protein sequence according to NP_001248.1; NP_001207417.1; NP_001207418.1, NP_001207419.1.

Please note the [peptide](#) is available for sale.

Purification and Storage

Purified from goat serum by ammonium sulphate precipitation followed by antigen affinity chromatography using the immunizing peptide.

Supplied at 0.5 mg/ml in Tris saline, 0.02% sodium azide, pH7.3 with 0.5% bovine serum albumin.

Aliquot and store at -20°C. Minimize freezing and thawing.

Applications Tested

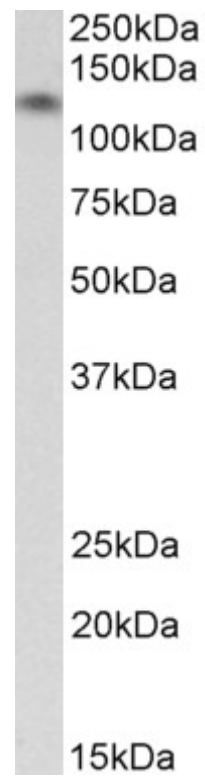
Peptide ELISA: antibody detection limit dilution 1:128000.

Western blot: Approx 125kDa band observed in Human Heart lysates (calculated MW of 83.4kDa according to NP_001207417.1). The observed molecular weight corresponds to earlier findings in literature with different antibodies (Zhong et al, Clin Cancer Res. 2001 Jun;7(6):1683-7. PMID: 11410507). Recommended concentration: 0.03-0.1µg/ml.

Species Reactivity

Tested: Human

Expected from sequence similarity: Human, Mouse, Rat, Dog, Cow



EB12229 (0.03µg/ml) staining of Human Heart lysate (35µg protein in RIPA buffer). Primary incubation was 1 hour. Detected by chemiluminescence.