

UK Office

Everest Biotech Ltd

Cherwell Innovation Centre
77 Heyford Park
Upper Heyford
Oxfordshire
OX25 5HD
UK

Enquiries:

info@everestbiotech.com

Sales:

sales@everestbiotech.com

Tech support:

support@everestbiotech.com

Tel: +44 (0)1869 238326

www.everestbiotech.com

**Research Use Only. Not for
diagnostic or therapeutic use.**

EB12228 - Goat Anti-CDH13 / H-cadherin Antibody

Size: 100µg specific antibody in 200µl



Target Protein

Principal Names: CDH13, cadherin 13, H-cadherin (heart), CDHH, P105, H-cadherin, T-cad, T-cadherin, cadherin-13, heart cadherin

Official Symbol: CDH13

Accession Number(s): NP_001248.1; NP_001207417.1; NP_001207418.1

Human GeneID(s): [1012](#)

Important Comments: The immunizing peptide represents the N terminus of the mature protein. This antibody is expected to recognize isoform 1, 2 and 3 (NP_001248.1; NP_001207417.1; NP_001207418.1).

Immunogen

Peptide with sequence C-DSDRPERSKFRLTGK, from the internal region of the protein sequence according to NP_001248.1; NP_001207417.1; NP_001207418.1.

Please note the [peptide](#) is available for sale.

Purification and Storage

Purified from goat serum by ammonium sulphate precipitation followed by antigen affinity chromatography using the immunizing peptide.

Supplied at 0.5 mg/ml in Tris saline, 0.02% sodium azide, pH7.3 with 0.5% bovine serum albumin.

Aliquot and store at -20°C. Minimize freezing and thawing.

Applications Tested

Peptide ELISA: antibody detection limit dilution 1:4000.

Western blot: Approx 110kDa band observed in Human Heart lysates and 85kDa in Human Brain (Amygdala and Hippocampus) lysates (calculated MW of 78.3kDa according to NP_001248.1). The observed molecular weights correspond to the glycosylated forms.

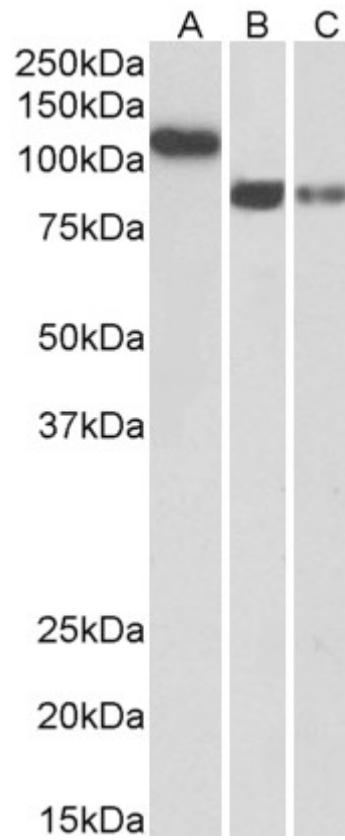
Recommended concentration: 0.3-1µg/ml.

IHC: Paraffin embedded Human Heart. Recommended concentration: 5µg/ml.

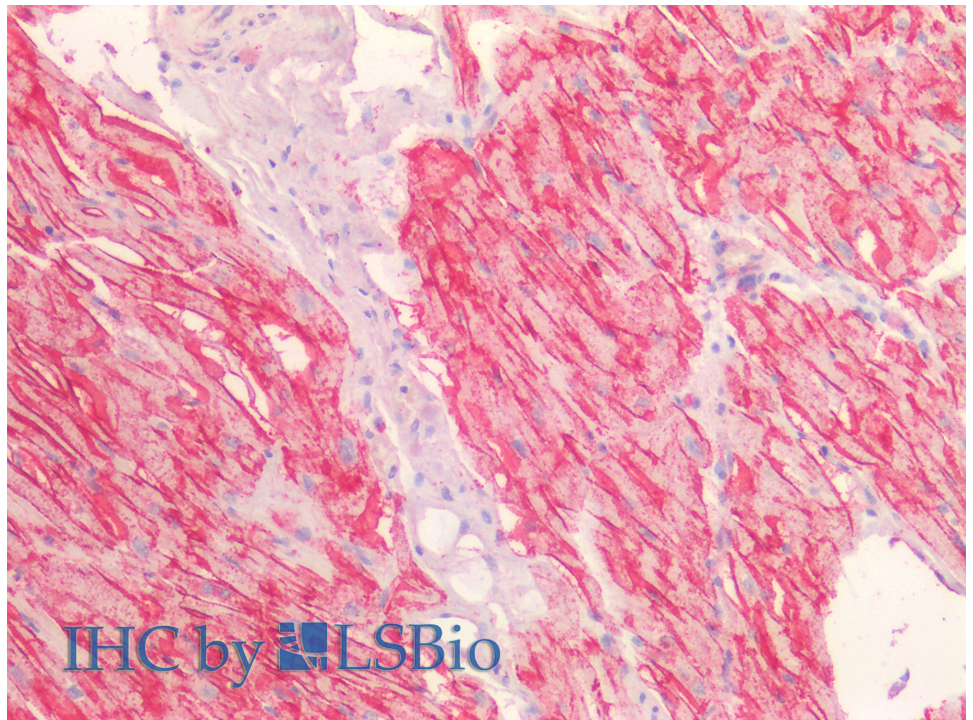
Species Reactivity

Tested: Human

Expected from sequence similarity: Human



EB12228 (0.3 μ g/ml) staining of Human Heart (A), Amygdala (B) and Hippocampus (C) lysates (35 μ g protein in RIPA buffer). Primary incubation was 1 hour. Detected by chemiluminescence.



EB12228 (5 μ g/ml) staining of paraffin embedded Human Heart. Steamed antigen retrieval with citrate buffer pH 6, AP-staining.