



## UK Office

### Everest Biotech Ltd

Cherwell Innovation Centre  
77 Heyford Park  
Upper Heyford  
Oxfordshire  
OX25 5HD  
UK

Enquiries:

[info@everestbiotech.com](mailto:info@everestbiotech.com)

Sales:

[sales@everestbiotech.com](mailto:sales@everestbiotech.com)

Tech support:

[support@everestbiotech.com](mailto:support@everestbiotech.com)

Tel: +44 (0)1869 238326

[www.everestbiotech.com](http://www.everestbiotech.com)

**Research Use Only. Not for  
diagnostic or therapeutic use.**

## EB09252 - Goat Anti-CDK10 / PISSLRE Antibody

Size: 100µg specific antibody in 200µl



### Target Protein

**Principal Names:** CDK10, cyclin-dependent kinase 10, PISSLRE, CDC2-related protein kinase, cell division protein kinase 10, cyclin-dependent kinase (CDC2-like) 10, cyclin-dependent kinase related protein, serine/threonine protein kinase PISSLRE

**Official Symbol:** CDK10

**Accession Number(s):** NP\_443714.3

**Human GeneID(s):** [8558](#)

**Important Comments:** This antibody is expected to recognize reported isoform a (NP\_443714.3).

### Immunogen

Peptide with sequence AEPDLECEQIRLK , from the N Terminus of the protein sequence according to NP\_443714.3.

Please note the [peptide](#) is available for sale.

### Purification and Storage

Purified from goat serum by ammonium sulphate precipitation followed by antigen affinity chromatography using the immunizing peptide.

Supplied at 0.5 mg/ml in Tris saline, 0.02% sodium azide, pH7.3 with 0.5% bovine serum albumin.

Aliquot and store at -20°C. Minimize freezing and thawing.

### Applications Tested

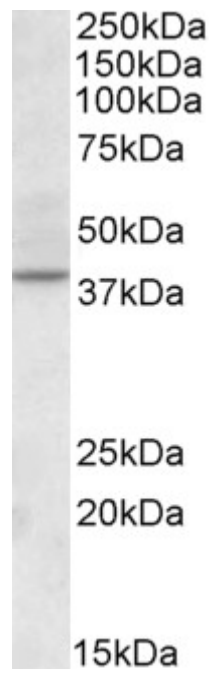
**Peptide ELISA:** antibody detection limit dilution 1:64000.

**Western blot:** Approx 38kDa band observed in Human Kidney lysates (calculated MW of 41.0 kDa according to NP\_443714.3. Recommended concentration: 2-3µg/ml.

### Species Reactivity

**Tested:** Human

**Expected from sequence similarity:** Human



EB09252 (2 $\mu$ g/ml) staining of Human Kidney lysate (35 $\mu$ g protein in RIPA buffer). Primary incubation was 1 hour.  
Detected by chemiluminescence.