

## UK Office

### Everest Biotech Ltd

Cherwell Innovation Centre  
77 Heyford Park  
Upper Heyford  
Oxfordshire  
OX25 5HD  
UK

Enquiries:

[info@everestbiotech.com](mailto:info@everestbiotech.com)

Sales:

[sales@everestbiotech.com](mailto:sales@everestbiotech.com)

Tech support:

[support@everestbiotech.com](mailto:support@everestbiotech.com)

Tel: +44 (0)1869 238326

[www.everestbiotech.com](http://www.everestbiotech.com)

**Research Use Only. Not for  
diagnostic or therapeutic use.**

## EB12670 - Goat Anti-CDK7 (aa47-58) Antibody

Size: 100µg specific antibody in 200µl



### Target Protein

**Principal Names:** CDK7, cyclin-dependent kinase 7, CAK1, CDKN7, HCAK, MO15, STK1, p39MO15, 39 KDa protein kinase, CAK, CDK-activating kinase 1, TFIIF basal transcription factor complex kinase subunit, cell division protein kinase 7, cyclin-dependent kinase 7 (MO15 homolog),

**Official Symbol:** CDK7

**Accession Number(s):** NP\_001790.1

**Human GeneID(s):** [1022](#)

**Non-Human GeneID(s):** 12572 (mouse), 171150 (rat)

### Immunogen

Peptide with sequence C-HRSEAKDGINRT, from the internal region of the protein sequence according to NP\_001790.1.

Please note the [peptide](#) is available for sale.

### Purification and Storage

Purified from goat serum by ammonium sulphate precipitation followed by antigen affinity chromatography using the immunizing peptide.

Supplied at 0.5 mg/ml in Tris saline, 0.02% sodium azide, pH7.3 with 0.5% bovine serum albumin.

Aliquot and store at -20°C. Minimize freezing and thawing.

### Applications Tested

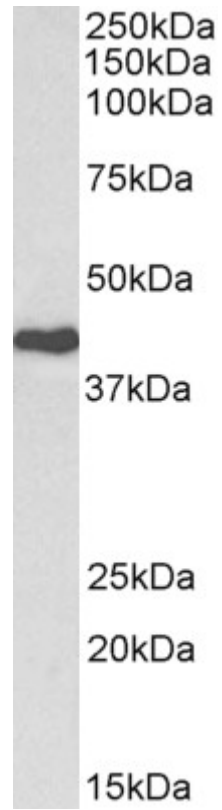
**Peptide ELISA:** antibody detection limit dilution 1:128000.

**Western blot:** Approx 40kDa band observed in lysates of cell line Jurkat (calculated MW of 39.0kDa according to NP\_001790.1). Recommended concentration: 0.3-1µg/ml.

### Species Reactivity

**Tested:** Human

**Expected from sequence similarity:** Human, Mouse, Rat, Dog, Cow



EB12670 (0.3 $\mu$ g/ml) staining of Jurkat lysate (35 $\mu$ g protein in RIPA buffer). Primary incubation was 1 hour.  
Detected by chemiluminescence.