

## UK Office

### Everest Biotech Ltd

Cherwell Innovation Centre  
77 Heyford Park  
Upper Heyford  
Oxfordshire  
OX25 5HD  
UK

Enquiries:

[info@everestbiotech.com](mailto:info@everestbiotech.com)

Sales:

[sales@everestbiotech.com](mailto:sales@everestbiotech.com)

Tech support:

[support@everestbiotech.com](mailto:support@everestbiotech.com)

Tel: +44 (0)1869 238326

[www.everestbiotech.com](http://www.everestbiotech.com)

**Research Use Only. Not for  
diagnostic or therapeutic use.**

## EB13049 - Goat Anti-CDK9 (aa86-98) Antibody

Size: 100µg specific antibody in 200µl



### Target Protein

**Principal Names:** CDK9, cyclin-dependent kinase 9, C-2k, CDC2L4, CTK1, PITALR, TAK, CDC2-related kinase, cell division cycle 2-like protein kinase 4, cell division protein kinase 9;, serine/threonine protein kinase PITALRE, tat-associated kinase complex catalytic subunit

**Official Symbol:** CDK9

**Accession Number(s):** NP\_001252.1

**Human GeneID(s):** [1025](#)

**Non-Human GeneID(s):** 107951 (mouse), 362110 (rat)

### Immunogen

Peptide with sequence RTKASPYNRCKGS, from the internal region of the protein sequence according to NP\_001252.1.

Please note the [peptide](#) is available for sale.

### Purification and Storage

Purified from goat serum by ammonium sulphate precipitation followed by antigen affinity chromatography using the immunizing peptide.

Supplied at 0.5 mg/ml in Tris saline, 0.02% sodium azide, pH7.3 with 0.5% bovine serum albumin.

Aliquot and store at -20°C. Minimize freezing and thawing.

### Applications Tested

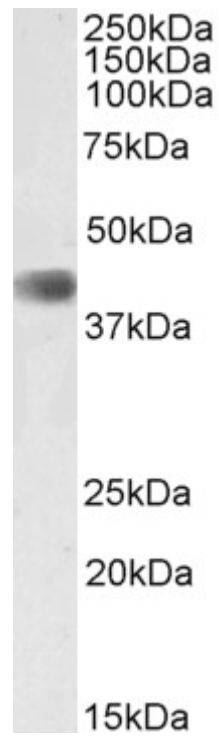
**Peptide ELISA:** antibody detection limit dilution 1:1000.

**Western blot:** Approx 40kDa band observed in Mouse Skeletal Muscle lysates (calculated MW of 42.8kDa according to Mouse NP\_570930.1). Recommended concentration: 1-3µg/ml.

### Species Reactivity

**Tested:** Mouse

**Expected from sequence similarity:** Human, Mouse, Rat, Dog, Pig, Cow



EB13049 (2 $\mu$ g/ml) staining of Mouse Skeletal Muscle lysate (35 $\mu$ g protein in RIPA buffer). Primary incubation was 1 hour. Detected by chemiluminescence.