



Everest Biotech Ltd  
Cherwell Innovation Centre  
77 Heyford Park  
Upper Heyford  
Oxfordshire  
OX25 5HD, United Kingdom

[everestbiotech.com](http://everestbiotech.com)

[sales@everestbiotech.com](mailto:sales@everestbiotech.com)

[support@everestbiotech.com](mailto:support@everestbiotech.com)

Tel +44 1869 238326

Fax +44 1869 238327

**Research Use Only. Not for  
diagnostic or therapeutic use.**

Storage: For long-term storage  
keep aliquots at -20°C. (Store no  
longer than 12 months at 4°C).  
Minimize freezing and thawing.

## EB06121 - Goat Anti-CENTA2 Antibody

Size: 100µg specific antibody in 200µl



### Target Protein

**Principal Names:** cent-b, centaurin beta, ArfGAP with dual PH domains 2, centaurin-alpha 2 protein, HSA272195, centaurin, alpha 2, CENTA2, ADAP2

**Official Symbol:** ADAP2

**Accession Number(s):** NP\_060874.1

**Human GeneID(s):** [55803](#)

### Immunogen

Peptide with sequence C-RLTASTESGRSSR, from the C Terminus of the protein sequence according to NP\_060874.1.

Please note the [peptide](#) is available for sale.

### Purification and Storage

Purified from goat serum by ammonium sulphate precipitation followed by antigen affinity chromatography using the immunizing peptide.

Supplied at 0.5 mg/ml in Tris saline, 0.02% sodium azide, pH7.3 with 0.5% bovine serum albumin.

Aliquot and store at -20°C. Minimize freezing and thawing.

### Applications Tested

**Peptide ELISA:** antibody detection limit dilution 1:32000.

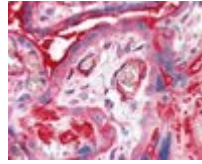
**Western blot:** Preliminary experiments in Human Brain and Heart lysates gave no specific signal but low background (at antibody concentration up to 1µg/ml). We would appreciate any feedback from people in the field - have any results been reported with other antibodies/lysates?

**IHC:** In paraffin embedded Human Placenta shows strong staining of cytoplasm in syncytiotrophoblasts.. Recommended concentration, 5-10µg/ml.

### Species Reactivity

**Tested:** Human

**Expected from sequence similarity:** Human



EB06121 (5µg/ml) staining of paraffin embedded Human Placenta. Steamed antigen retrieval with citrate buffer pH 6, AP-staining.