

## UK Office

### Everest Biotech Ltd

Cherwell Innovation Centre  
77 Heyford Park  
Upper Heyford  
Oxfordshire  
OX25 5HD  
UK

Enquiries:

[info@everestbiotech.com](mailto:info@everestbiotech.com)

Sales:

[sales@everestbiotech.com](mailto:sales@everestbiotech.com)

Tech support:

[support@everestbiotech.com](mailto:support@everestbiotech.com)

Tel: +44 (0)1869 238326

[www.everestbiotech.com](http://www.everestbiotech.com)

**Research Use Only. Not for  
diagnostic or therapeutic use.**

## EB09122 - Goat Anti-CEP290 Antibody

Size: 100µg specific antibody in 200µl



### Target Protein

**Principal Names:** CEP290, centrosomal protein 290kDa, 3H11Ag, BBS14, FLJ13615, FLJ21979, JBTS5, JBTS6, KIAA0373, LCA10, MKS4, NPHP6, SLSN6, rd16, CTCL tumor antigen se2-2, monoclonal antibody 3H11 antigen, nephrocytin-6, prostate cancer antigen T21

**Official Symbol:** CEP290

**Accession Number(s):** NP\_079390.3

**Human GeneID(s):** [80184](#)

**Non-Human GeneID(s):** 216274 (mouse)

**Important Comments:** Despite similarity of the immunizing peptide with the mouse protein, this antibody was demonstrated to weak for mouse Cep290.

### Immunogen

Peptide with sequence C-RNSKHLKQQQYRAEN, from the internal region of the protein sequence according to NP\_079390.3.

Please note the [peptide](#) is available for sale.

### Purification and Storage

Purified from goat serum by ammonium sulphate precipitation followed by antigen affinity chromatography using the immunizing peptide.

Supplied at 0.5 mg/ml in Tris saline, 0.02% sodium azide, pH7.3 with 0.5% bovine serum albumin.

Aliquot and store at -20°C. Minimize freezing and thawing.

### Applications Tested

**Peptide ELISA:** antibody detection limit dilution 1:128000.

**IHC:** Paraffin embedded Human Prostate. Recommended concentration: 5-7µg/ml.

**Immunocytochemistry:** Formaldehyde-fixed cell lines derived from Prostate Cancer and from Breast Cancer show typical centrosomal staining. Recommended concentration: 2-3ug/ml.

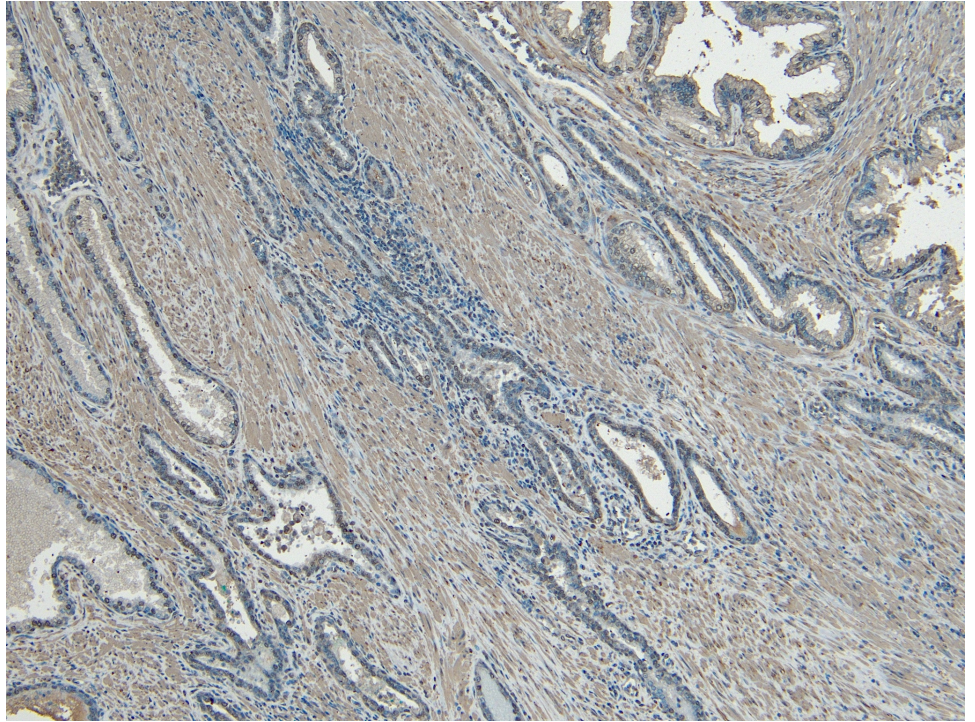
### Species Reactivity

**Tested:** Human

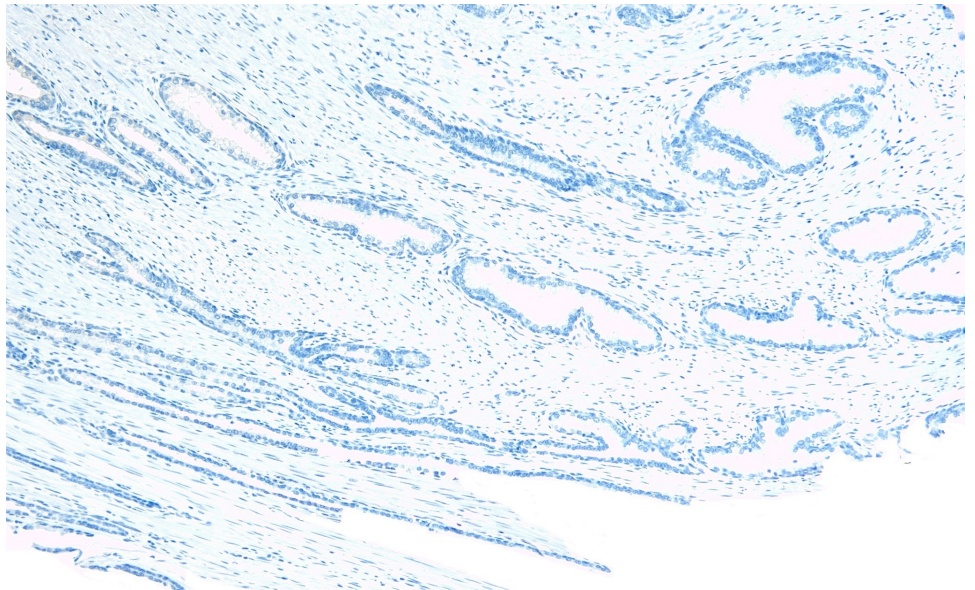
**Expected from sequence similarity:** Human

### Specific Reference

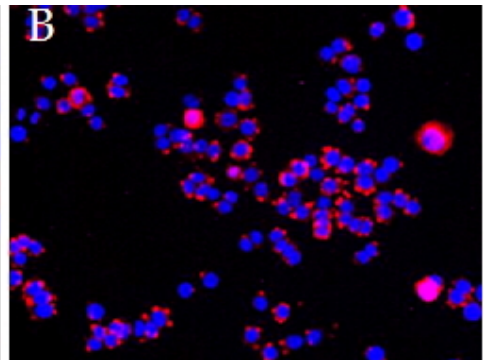
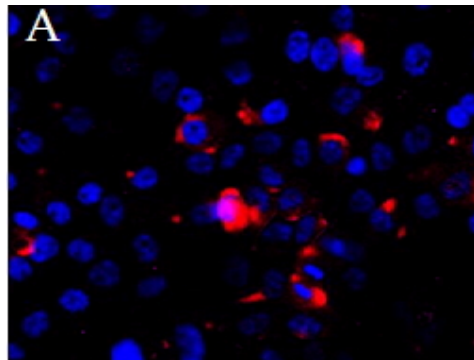
PMID: 0



EB09122 (5µg/ml) staining of paraffin embedded Human Prostate. Heat induced antigen retrieval with citrate buffer pH 6, HRP-staining.



EB09122 Negative Control showing staining of paraffin embedded Human Prostate, with no primary antibody.



EB09122 (2.5ug/ml overnight staining of cell lines OPCT-1 (A) and MDA468 (fB) with Alexa Fluor 568 (red) and nuclear counter staining with DAPI (blue). Data kindly provided by Dr S, McArdle, and obtained by Sumanjeet Malhi , John van Geest Research Centre, Nottingham, UK