



UK Office

Everest Biotech Ltd

Cherwell Innovation Centre
77 Heyford Park
Upper Heyford
Oxfordshire
OX25 5HD
UK

Enquiries:

info@everestbiotech.com

Sales:

sales@everestbiotech.com

Tech support:

support@everestbiotech.com

Tel: +44 (0)1869 238326

Fax: +44 (0)1869 238327

US Office

Everest Biotech c/o Abcore

405 Maple Street, Suite A106
Ramona,
CA 92065
USA

Inquiries:

info@everestbiotech.com

Sales:

usasales@everestbiotech.com

Tech support:

support@everestbiotech.com

Tel: 888-320-4628 (toll-free)

Fax: 888-841-9041

www.everestbiotech.com

**Research Use Only. Not for
diagnostic or therapeutic use.**

EB08384 - Goat Anti-CEP290 / NPHP6 Antibody

Size: 100µg specific antibody in 200µl



Target Protein

Principal Names: CEP290, centrosomal protein 290kDa, 3H11Ag, FLJ13615, FLJ21979, JBTS5, JBTS6, KIAA0373, LCA10, MKS4, NPHP6, SLSN6, rd16, CTCL tumor antigen se2-2, monoclonal antibody 3H11 antigen, nephrocystin 6, nephrocystin-6, nephrocystin-6, prostate cancer antigen T21

Official Symbol: CEP290

Accession Number(s): NP_079390.3

Human GeneID(s): [80184](#)

Immunogen

Peptide with sequence C-QSGAESTIPDADQ, from the internal region of the protein sequence according to NP_079390.3.

Please note the [peptide](#) is available for sale.

Purification and Storage

Purified from goat serum by ammonium sulphate precipitation followed by antigen affinity chromatography using the immunizing peptide.

Supplied at 0.5 mg/ml in Tris saline, 0.02% sodium azide, pH7.3 with 0.5% bovine serum albumin.

Aliquot and store at -20°C. Minimize freezing and thawing.

Applications Tested

Peptide ELISA: antibody detection limit dilution 1:8000.

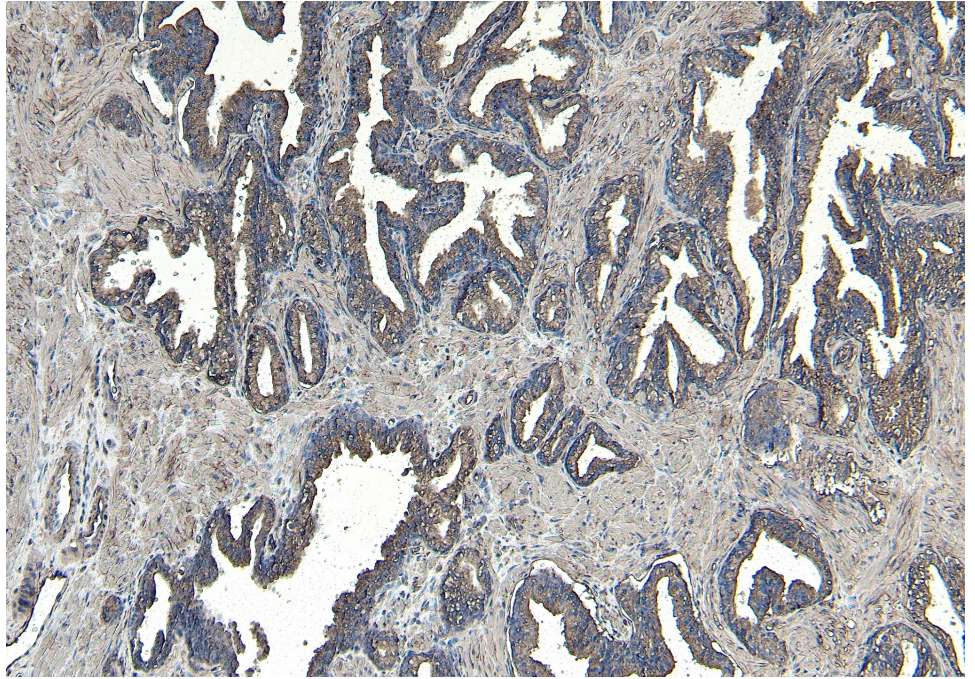
IHC: Paraffin embedded Human Prostate. Recommended concentration: 4-8µg/ml.

Immunofluorescence: Strong expression of the protein seen within the centrosome of HeLa cells. Recommended concentration: 10µg/ml.

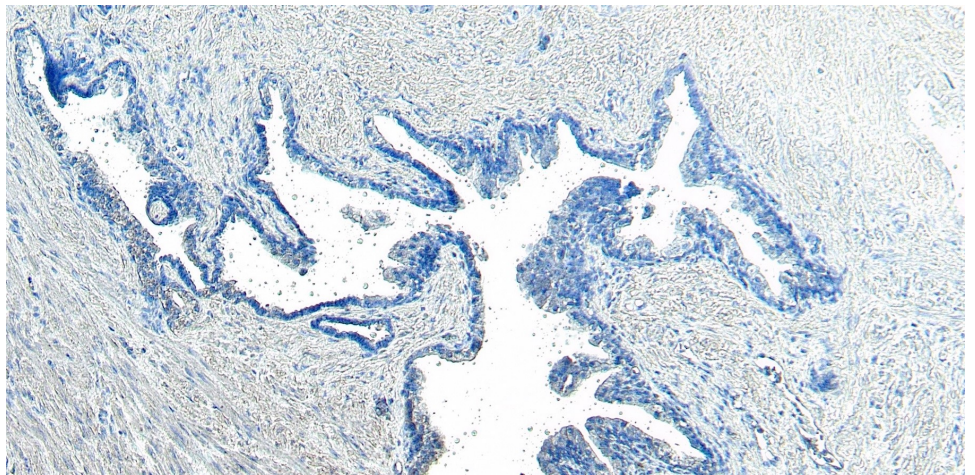
Species Reactivity

Tested: Human

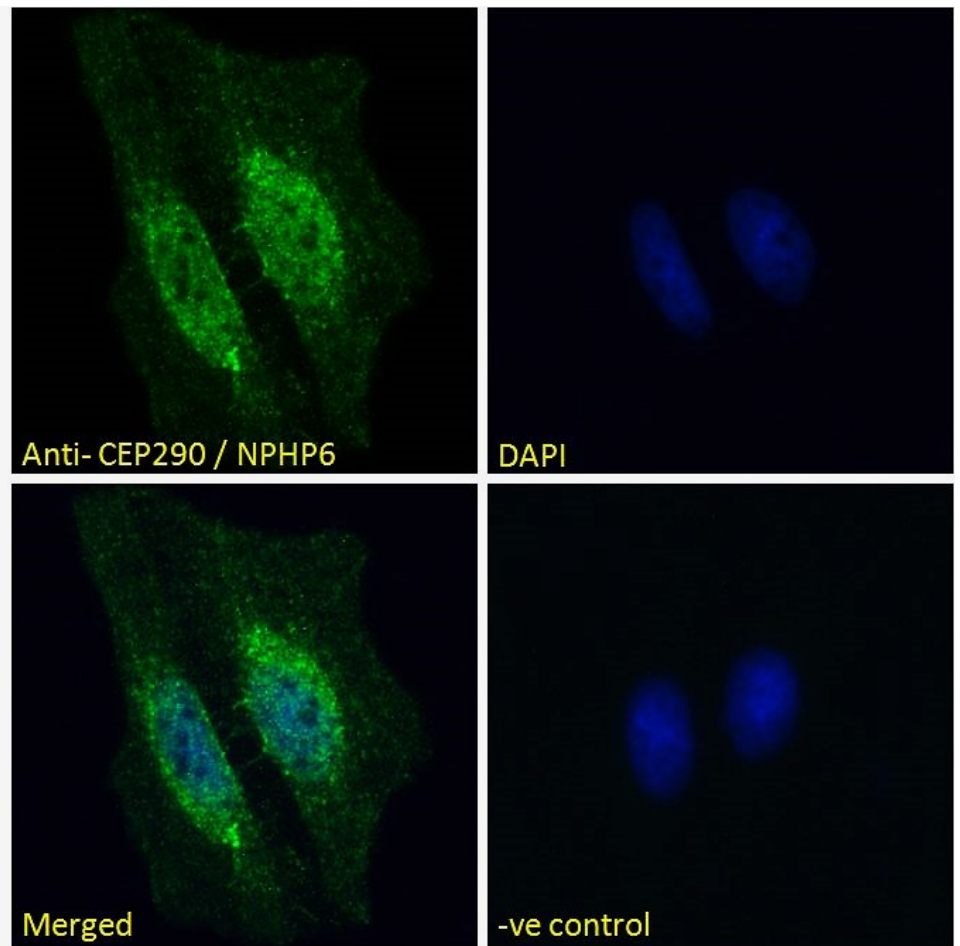
Expected from sequence similarity: Human



EB08384 (8µg/ml) staining of paraffin embedded Human Prostate. Heat induced antigen retrieval with citrate buffer pH 6, HRP-staining.



EB08384 Negative Control showing staining of paraffin embedded Human Prostate, with no primary antibody.



EB08384 Immunofluorescence analysis of paraformaldehyde fixed HeLa cells, permeabilized with 0.15% Triton. Primary incubation 1hr (10ug/ml) followed by Alexa Fluor 488 secondary antibody (2ug/ml), showing nuclear and centrosome staining. The nuclear stain is DAPI (blue). Negative control: Unimmunized goat IgG (10ug/ml) followed by Alexa Fluor 488 secondary antibody (2ug/ml).