

## UK Office

### Everest Biotech Ltd

Cherwell Innovation Centre  
77 Heyford Park  
Upper Heyford  
Oxfordshire  
OX25 5HD  
UK

Enquiries:

[info@everestbiotech.com](mailto:info@everestbiotech.com)

Sales:

[sales@everestbiotech.com](mailto:sales@everestbiotech.com)

Tech support:

[support@everestbiotech.com](mailto:support@everestbiotech.com)

Tel: +44 (0)1869 238326

[www.everestbiotech.com](http://www.everestbiotech.com)

**Research Use Only. Not for  
diagnostic or therapeutic use.**

## EB08405 - Goat Anti-CES1 Antibody

Size: 100µg specific antibody in 200µl



### Target Protein

**Principal Names:** CES1, carboxylesterase 1 (monocyte/macrophage serine esterase 1), ACAT, CEH, CES2, HMSE, HMSE1, MGC117365, PCE-1, SES1, TGH, acyl coenzyme A:cholesterol acyltransferase, carboxylesterase 1, carboxylesterase 2 (liver), cholesteryl ester hydrolase, egasyn, liver carboxylesterase, triacylglycerol hydrolase, monocyte/macrophage serine-esterase 1

**Official Symbol:** CES1

**Accession Number(s):** NP\_001020366.1; NP\_001020365.1; NP\_001257.4

**Human GeneID(s):** [1066](#)

**Important Comments:** This antibody is expected to recognise all three reported isoforms (NP\_001020366.1; NP\_001020365.1; NP\_001257.4).

### Immunogen

Peptide with sequence C-NTQAAQKLKDKKE, from the internal region (near C terminus) of the protein sequence according to NP\_001020366.1; NP\_001020365.1; NP\_001257.4.

Please note the [peptide](#) is available for sale.

### Purification and Storage

Purified from goat serum by ammonium sulphate precipitation followed by antigen affinity chromatography using the immunizing peptide.

Supplied at 0.5 mg/ml in Tris saline, 0.02% sodium azide, pH7.3 with 0.5% bovine serum albumin.

Aliquot and store at -20°C. Minimize freezing and thawing.

### Applications Tested

**Peptide ELISA:** antibody detection limit dilution 1:8000.

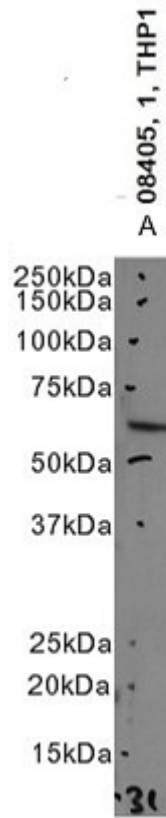
**Western blot:** Approx. 60kDa band observed in lysates of cell line THP-1, approx. 55kDa in Human Duodenum lysates, and approx. 55-60kDa in Human Liver lysates (calculated MW of 62.6kDa according to NP\_001020366.1). These molecular weights are observed by other commercial sources. Recommended concentration: 0.5-1µg/ml. Primary incubation 1 hour at room temperature.

**IHC:** In paraffin embedded Human Lung shows staining of lymphocytes in the vasculature.. Recommended concentration, 2-3µg/ml.

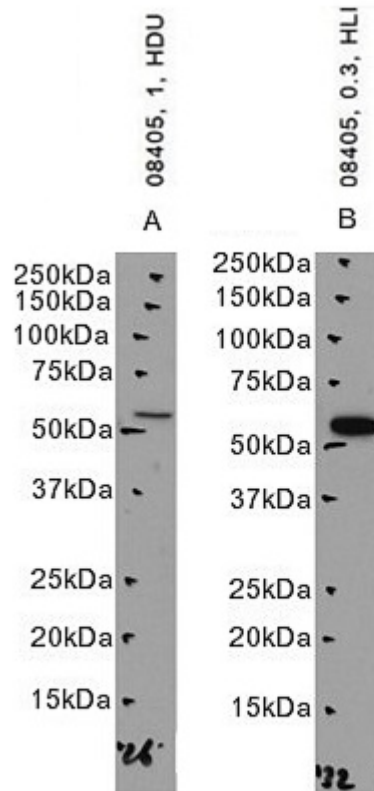
### Species Reactivity

**Tested:** Human

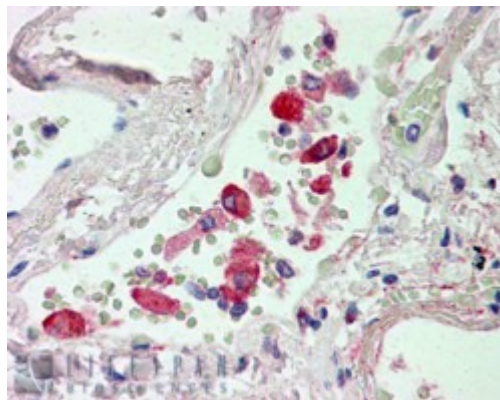
**Expected from sequence similarity:** Human



EB08405 optimised QC. Primary incubation 1 hour at room temperature.  
Image A: THP-1 cell lysate at primary Ab concentration 1µg/ml. (Loaded 35µg protein in RIPA buffer, per lane). Detected by chemiluminescence.



EB08405 optimised QC. Primary incubation 1 hour at room temperature.  
 Image A: Human Duodenum lysate at primary Ab concentration 1µg/ml. Image B: Human Liver lysate at primary Ab concentration 0.5µg/ml (Loaded 35µg protein in RIPA buffer, per lane). Detected by chemiluminescence.



EB08405 (2.5µg/ml) staining of paraffin embedded Human Lung. Steamed antigen retrieval with citrate buffer pH 6, AP-staining.