

## UK Office

### Everest Biotech Ltd

Cherwell Innovation Centre  
77 Heyford Park  
Upper Heyford  
Oxfordshire  
OX25 5HD  
UK

Enquiries:

[info@everestbiotech.com](mailto:info@everestbiotech.com)

Sales:

[sales@everestbiotech.com](mailto:sales@everestbiotech.com)

Tech support:

[support@everestbiotech.com](mailto:support@everestbiotech.com)

Tel: +44 (0)1869 238326

Fax: +44 (0)1869 238327

## US Office

### Everest Biotech c/o Abcore

405 Maple Street, Suite A106  
Ramona,  
CA 92065  
USA

Inquiries:

[info@everestbiotech.com](mailto:info@everestbiotech.com)

Sales:

[usasales@everestbiotech.com](mailto:usasales@everestbiotech.com)

Tech support:

[support@everestbiotech.com](mailto:support@everestbiotech.com)

Tel: 888-320-4628 (toll-free)

Fax: 888-841-9041

[www.everestbiotech.com](http://www.everestbiotech.com)

**Research Use Only. Not for  
diagnostic or therapeutic use.**

## EB08405 - Goat Anti-CES1 Antibody

Size: 100µg specific antibody in 200µl



### Target Protein

**Principal Names:** CES1, carboxylesterase 1 (monocyte/macrophage serine esterase 1), ACAT, CEH, CES2, HMSE, HMSE1, MGC117365, PCE-1, SES1, TGH, acyl coenzyme A:cholesterol acyltransferase, carboxylesterase 1, carboxylesterase 2 (liver), cholesteryl ester hydrolase, egasyn, liver carboxylesterase, triacylglycerol hydrolase, monocyte/macrophage serine-esterase 1

**Official Symbol:** CES1

**Accession Number(s):** NP\_001020366.1; NP\_001020365.1; NP\_001257.4

**Human GeneID(s):** [1066](#)

**Important Comments:** This antibody is expected to recognise all three reported isoforms (NP\_001020366.1; NP\_001020365.1; NP\_001257.4).

### Immunogen

Peptide with sequence C-NTQAAQKLKDKE, from the internal region (near C terminus) of the protein sequence according to NP\_001020366.1; NP\_001020365.1; NP\_001257.4.

Please note the [peptide](#) is available for sale.

### Purification and Storage

Purified from goat serum by ammonium sulphate precipitation followed by antigen affinity chromatography using the immunizing peptide.

Supplied at 0.5 mg/ml in Tris saline, 0.02% sodium azide, pH7.3 with 0.5% bovine serum albumin.

Aliquot and store at -20°C. Minimize freezing and thawing.

### Applications Tested

**Peptide ELISA:** antibody detection limit dilution 1:8000.

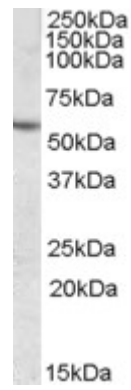
**Western blot:** Approx 55-60kDa band observed in Human Liver and Ileum lysates (calculated MW of 62.6kDa according to NP\_001020366.1). In transfected HEK293 transiently expressing CES1 a band of approx. 65kDa is observed. This band is not observed in the non-transfected HEK293. Recommended concentration: 0.03-0.1µg/ml.

**IHC:** In paraffin embedded Human Lung shows staining of lymphocytes in the vasculature.. Recommended concentration, 2-3µg/ml.

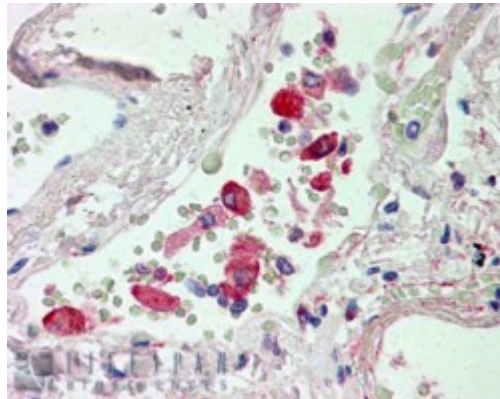
### Species Reactivity

**Tested:** Human

**Expected from sequence similarity:** Human



EB08405 (0.03 $\mu$ g/ml) staining of Human Liver lysate (35 $\mu$ g protein in RIPA buffer). Primary incubation was 1 hour. Detected by chemiluminescence.



EB08405 (2.5 $\mu$ g/ml) staining of paraffin embedded Human Lung. Steamed antigen retrieval with citrate buffer pH 6, AP-staining.