



UK Office

Everest Biotech Ltd

Cherwell Innovation Centre
77 Heyford Park
Upper Heyford
Oxfordshire
OX25 5HD
UK

Enquiries:

info@everestbiotech.com

Sales:

sales@everestbiotech.com

Tech support:

support@everestbiotech.com

Tel: +44 (0)1869 238326

www.everestbiotech.com

**Research Use Only. Not for
diagnostic or therapeutic use.**

EB07255 - Goat Anti-Chat (mouse) Antibody

Size: 100µg specific antibody in 200µl



Target Protein

Principal Names: Chat, choline acetyltransferase, B230380D24Rik

Official Symbol: Chat

Accession Number(s): NP_034021.1

Non-Human GeneID(s): 12647 (mouse), 432359 (rat)

Important Comments: This antibody is NOT expected to cross-react to Human CHAT.

Immunogen

Peptide with sequence C-KERARGPTKPSNLD, from the C Terminus of the protein sequence according to NP_034021.1.

Please note the [peptide](#) is available for sale.

Purification and Storage

Purified from goat serum by ammonium sulphate precipitation followed by antigen affinity chromatography using the immunizing peptide.

Supplied at 0.5 mg/ml in Tris saline, 0.02% sodium azide, pH7.3 with 0.5% bovine serum albumin.

Aliquot and store at -20°C. Minimize freezing and thawing.

Applications Tested

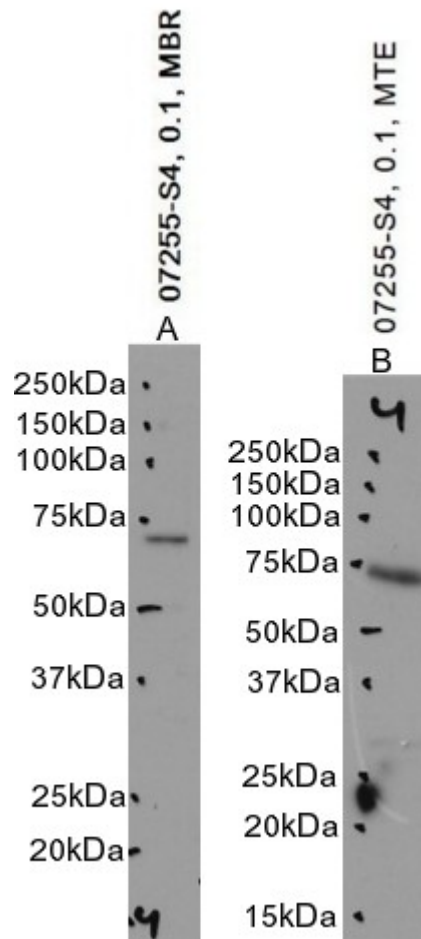
Peptide ELISA: antibody detection limit dilution 1:128000.

Western blot: Approx 75kDa band observed in Mouse Brain and Testis lysates, and approx. 70kDa in preliminary testing of Rat Testes and Mouse small intestine lysate (calculated MW of 72.3kDa according to Mouse NP_034021.1). Recommended concentration: 0.1-0.3µg/ml. Primary incubation 1 hour at room temperature.

Species Reactivity

Tested: Mouse

Expected from sequence similarity: Mouse, Rat



EB07255 optimised QC. Primary incubation 1 hour at room temperature.
 Images A and B: Mouse Brain and Testes lysate at primary Ab concentration 0.1ug/ml.
 (Loaded 35µg protein in RIPA buffer, per lane). Detected by chemiluminescence.