



UK Office

Everest Biotech Ltd

Cherwell Innovation Centre
77 Heyford Park
Upper Heyford
Oxfordshire
OX25 5HD
UK

Enquiries:

info@everestbiotech.com

Sales:

sales@everestbiotech.com

Tech support:

support@everestbiotech.com

Tel: +44 (0)1869 238326

Fax: +44 (0)1869 238327

US Office

Everest Biotech c/o Abcore

405 Maple Street, Suite A106
Ramona,
CA 92065
USA

Inquiries:

info@everestbiotech.com

Sales:

usasales@everestbiotech.com

Tech support:

support@everestbiotech.com

Tel: 888-320-4628 (toll-free)

Fax: 888-841-9041

www.everestbiotech.com

**Research Use Only. Not for
diagnostic or therapeutic use.**

EB09839 - Goat Anti-CHCHD3 Antibody

Size: 100µg specific antibody in 200µl



Target Protein

Principal Names: coiled-coil-helix-coiled-coil-helix domain containing 3, FLJ20420, CHCHD3

Official Symbol: CHCHD3

Accession Number(s): NP_060282.1

Human GeneID(s): [54927](#)

Non-Human GeneID(s): 296966 (rat)

Immunogen

Peptide with sequence KFKRYESHPVCAD, from the internal region of the protein sequence according to NP_060282.1.

Please note the [peptide](#) is available for sale.

Purification and Storage

Purified from goat serum by ammonium sulphate precipitation followed by antigen affinity chromatography using the immunizing peptide.

Supplied at 0.5 mg/ml in Tris saline, 0.02% sodium azide, pH7.3 with 0.5% bovine serum albumin.

Aliquot and store at -20°C. Minimize freezing and thawing.

Applications Tested

Peptide ELISA: antibody detection limit dilution 1:16000.

Western blot: Approx 26kDa band observed in Human Brain (Cerebellum) and Heart lysates (calculated MW of 26.2kDa according to NP_060282.1). Recommended concentration: 1-3µg/ml. A customer found ~30kDa in THP1 and in Human primary monocyte derived dendritic cells.

IHC: Paraffin embedded Human Heart and Skeletal Muscle. Recommended concentration: 5µg/ml.

Species Reactivity

Tested: Human

Expected from sequence similarity: Human, Mouse, Rat, Dog, Cow, Sheep

Specific Reference

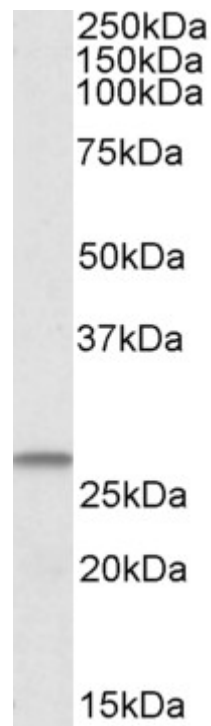
This antibody has been successfully used in IF on Human:

Steffen J, Vashisht AA, Wan J, Jen JC, Claypool SM, Wohlschlegel J, Koehler CM.

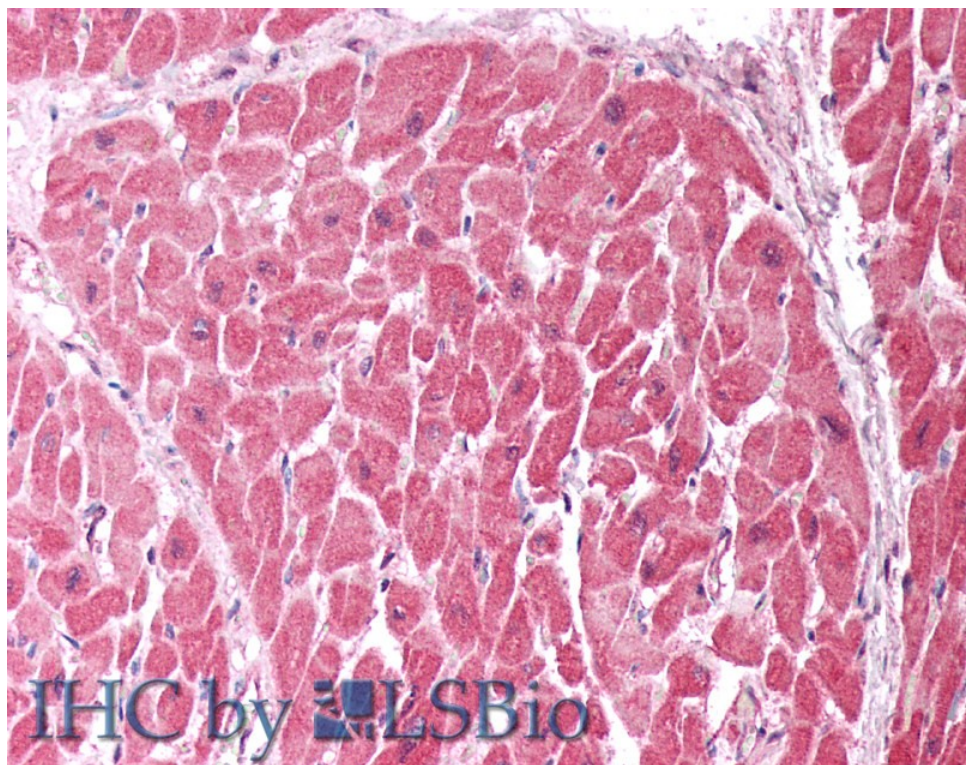
Rapid degradation of mutant SLC25A46 by the ubiquitin-proteasome system results in MFN1/2 mediated hyperfusion of mitochondria.

Mol Biol Cell. 2017 Jan 5.

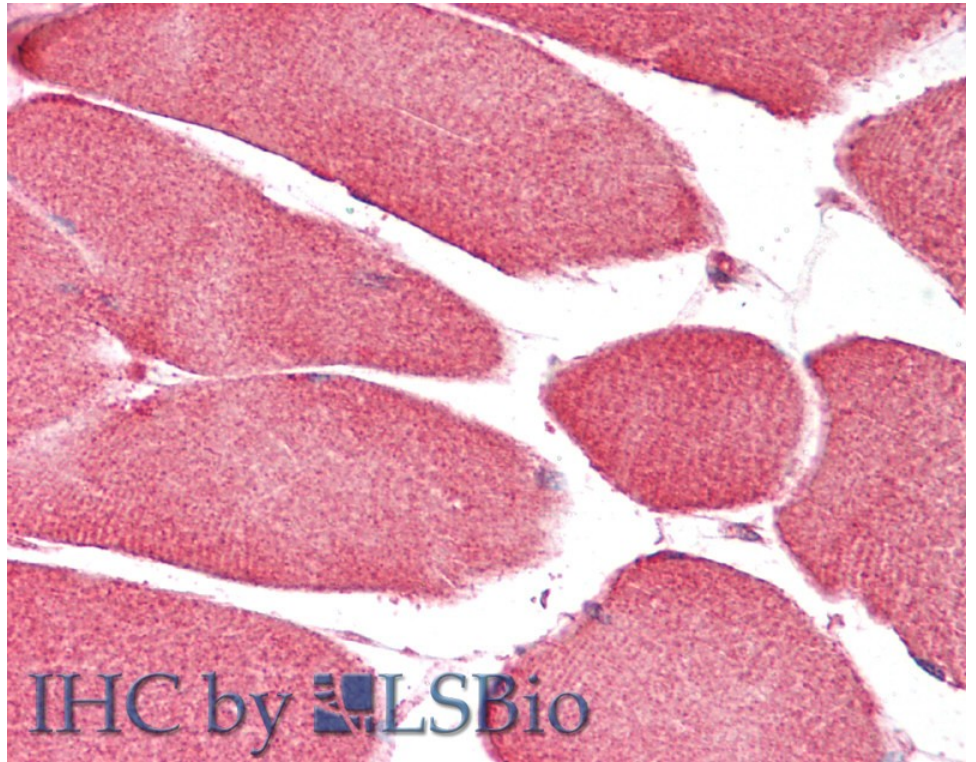
PMID: 28057766



EB09839 (1 μ g/ml) staining of Human Heart lysate (35 μ g protein in RIPA buffer). Primary incubation was 1 hour.
Detected by chemiluminescence.



EB09839 (5 μ g/ml) staining of paraffin embedded Human Heart. Steamed antigen retrieval with citrate buffer pH 6, AP-staining.



EB09839 (5µg/ml) staining of paraffin embedded Human Skeletal Muscle. Steamed antigen retrieval with citrate buffer pH 6, AP-staining.