



UK Office

Everest Biotech Ltd

Cherwell Innovation Centre
77 Heyford Park
Upper Heyford
Oxfordshire
OX25 5HD
UK

Enquiries:

info@everestbiotech.com

Sales:

sales@everestbiotech.com

Tech support:

support@everestbiotech.com

Tel: +44 (0)1869 238326

Fax: +44 (0)1869 238327

US Office

Everest Biotech c/o Abcore

405 Maple Street, Suite A106
Ramona,
CA 92065
USA

Inquiries:

info@everestbiotech.com

Sales:

usasales@everestbiotech.com

Tech support:

support@everestbiotech.com

Tel: 888-320-4628 (toll-free)

Fax: 888-841-9041

www.everestbiotech.com

**Research Use Only. Not for
diagnostic or therapeutic use.**

EB05207 - Goat Anti-CHN2 Antibody

Size: 100µg specific antibody in 200µl



Target Protein

Principal Names: CHN2, chimerin (chimaerin) 2, ARHGAP3, RHOGAP3, RhoGAP3, beta chimerin, Chimerin 2 (GTPase-activating protein, rho, 3), BCH, MGC138360, rho-GTPase-activating protein 3

Official Symbol: CHN2

Accession Number(s): NP_001035025.1; NP_004058.1

Human GeneID(s): [1124](#)

Important Comments: This antibody is expected to recognize both reported isoforms (NP_004058.1; NP_001035025.1).

Immunogen

Peptide with sequence C-QILIENEDVLF, from the C Terminus of the protein sequence according to NP_001035025.1; NP_004058.1.

Please note the [peptide](#) is available for sale.

Purification and Storage

Purified from goat serum by ammonium sulphate precipitation followed by antigen affinity chromatography using the immunizing peptide.

Supplied at 0.5 mg/ml in Tris saline, 0.02% sodium azide, pH7.3 with 0.5% bovine serum albumin.

Aliquot and store at -20°C. Minimize freezing and thawing.

Applications Tested

Peptide ELISA: antibody detection limit dilution 1:8000.

Western blot: Preliminary experiments in Human Brain (Cerebellum and Frontal Cortex) lysates gave no specific signal but low background (at antibody concentration up to 1µg/ml). We would appreciate any feedback from people in the field - have any results been reported with other antibodies/lysates?

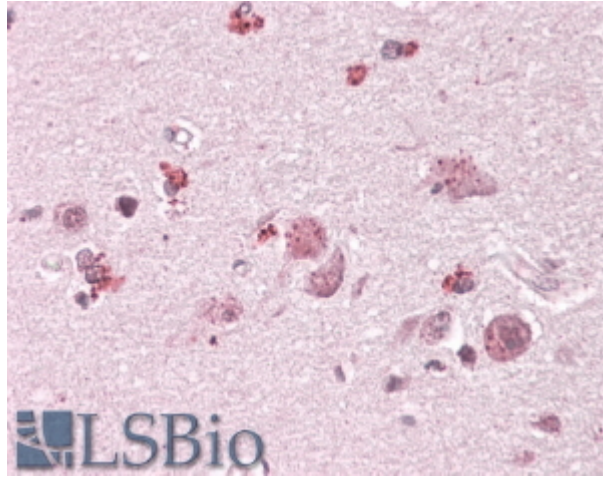
IHC: In paraffin embedded Human Cortex shows staining of neuronal bodies.

Recommended concentration, 3-6µg/ml.

Species Reactivity

Tested: Human

Expected from sequence similarity: Human, Mouse, Dog, Cow



EB05207 (3.8µg/ml) staining of paraffin embedded Human Cortex. Steamed antigen retrieval with citrate buffer pH 6, AP-staining.