



UK Office

Everest Biotech Ltd

Cherwell Innovation Centre
77 Heyford Park
Upper Heyford
Oxfordshire
OX25 5HD
UK

Enquiries:

info@everestbiotech.com

Sales:

sales@everestbiotech.com

Tech support:

support@everestbiotech.com

Tel: +44 (0)1869 238326

www.everestbiotech.com

**Research Use Only. Not for
diagnostic or therapeutic use.**

EB11644 - Goat Anti-CHRM2 (aa352-364) Antibody

Size: 100µg specific antibody in 200µl



Target Protein

Principal Names: 7TM receptor, cholinergic receptor, muscarinic 2, CHRM2, FLJ43243, HM2, MGC120006, MGC120007, muscarinic acetylcholine receptor M2, muscarinic M2 receptor, OTTHUMP00000208393, OTTHUMP00000208394, OTTHUMP00000208395, OTTHUMP00000208396

Official Symbol: CHRM2

Accession Number(s): NP_000730.1

Human GeneID(s): [1129](#)

Non-Human GeneID(s): 243764 (mouse)

Important Comments: Reported variants represent identical protein: NP_001006628.1, NP_001006633.1, NP_001006627.1, NP_000730.1, NP_001006629.1, NP_001006630.1, NP_001006631.1, NP_001006632.1.

Immunogen

Peptide with sequence C-QNGDEKQNVARK, from the internal region of the protein sequence according to NP_000730.1.

Please note the [peptide](#) is available for sale.

Purification and Storage

Purified from goat serum by ammonium sulphate precipitation followed by antigen affinity chromatography using the immunizing peptide.

Supplied at 0.5 mg/ml in Tris saline, 0.02% sodium azide, pH7.3 with 0.5% bovine serum albumin.

Aliquot and store at -20°C. Minimize freezing and thawing.

Applications Tested

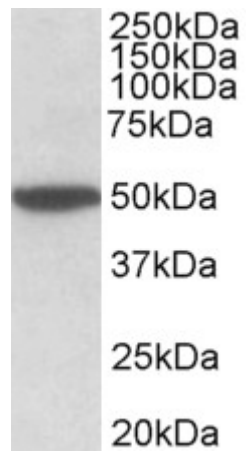
Peptide ELISA: antibody detection limit dilution 1:128000.

Western blot: Approx 50kDa band observed in Mouse Brain lysates (calculated MW of 51.5kDa according to Mouse NP_987076.2). Recommended concentration: 0.5-2µg/ml.

Species Reactivity

Tested: Mouse

Expected from sequence similarity: Human, Mouse, Dog, Pig, Cow



EB11644 (2 μ g/ml) staining of Mouse Brain lysate (35 μ g protein in RIPA buffer). Primary incubation was 1 hour.
Detected by chemiluminescence.