

UK Office

Everest Biotech Ltd

Cherwell Innovation Centre
77 Heyford Park
Upper Heyford
Oxfordshire
OX25 5HD
UK

Enquiries:

info@everestbiotech.com

Sales:

sales@everestbiotech.com

Tech support:

support@everestbiotech.com

Tel: +44 (0)1869 238326

www.everestbiotech.com

**Research Use Only. Not for
diagnostic or therapeutic use.**

EB08480 - Goat Anti-CHRNA2 Antibody

Size: 100µg specific antibody in 200µl



Target Protein

Principal Names: CHRNA2, cholinergic receptor, nicotinic, beta 2 (neuronal), EFNL3, nAChRB2, cholinergic receptor, nicotinic, beta polypeptide 2 (neuronal), neuronal nicotinic acetylcholine receptor beta 2

Official Symbol: CHRNA2

Accession Number(s): NP_000739.1

Human GeneID(s): [1141](#)

Immunogen

Peptide with sequence QPRHHCARQLR, from the internal region of the protein sequence according to NP_000739.1.

Please note the [peptide](#) is available for sale.

Purification and Storage

Purified from goat serum by ammonium sulphate precipitation followed by antigen affinity chromatography using the immunizing peptide.

Supplied at 0.5 mg/ml in Tris saline, 0.02% sodium azide, pH7.3 with 0.5% bovine serum albumin.

Aliquot and store at -20°C. Minimize freezing and thawing.

Applications Tested

Peptide ELISA: antibody detection limit dilution 1:64000.

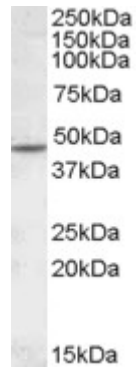
Western blot: Approx. 40-48 kDa band observed in Human Brain (Cerebellum,) lysates (calculated MW of 57.0 kDa according to NP_000739.1). This molecular weight is routinely observed by other sources. Recommended concentration: 1-3µg/ml. Primary incubation 1 hour at room temperature.

IHC: Paraffin embedded Human Uterus. Recommended concentration: 2.5µg/ml.

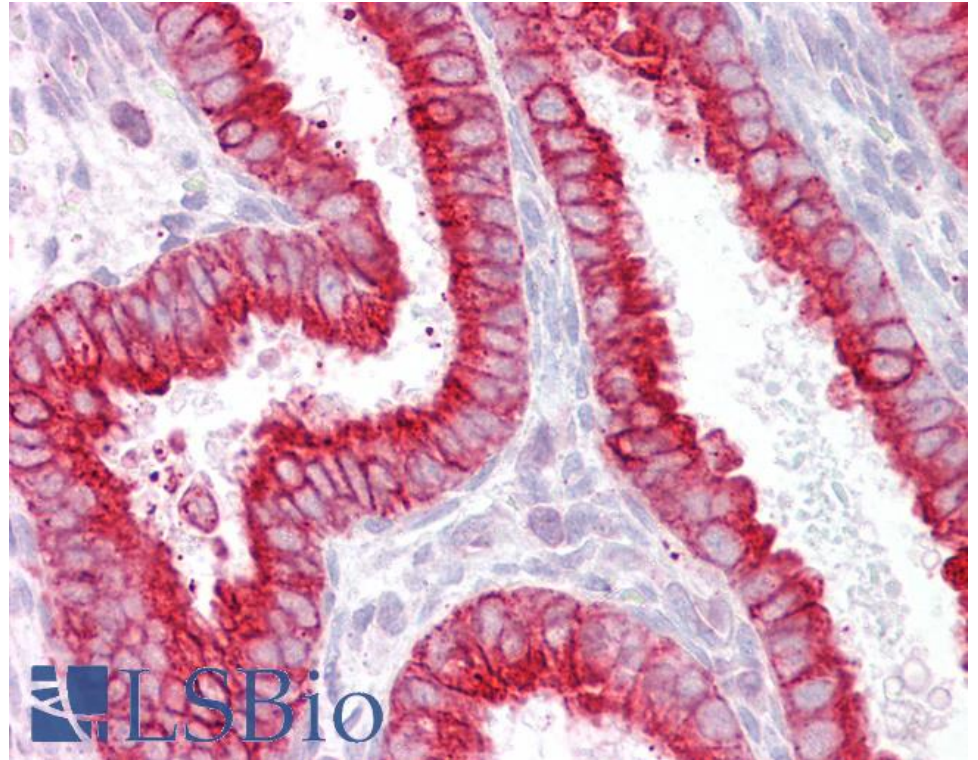
Species Reactivity

Tested: Human

Expected from sequence similarity: Human, Mouse, Rat, Dog, Pig, Cow



EB08480 (1 μ g/ml) staining of Human Cerebellum lysate (35 μ g protein in RIPA buffer). Detected by chemiluminescence.



EB08480 (2.5 μ g/ml) staining of paraffin embedded Human Uterus. Steamed antigen retrieval with citrate buffer pH 6, AP-staining.