

UK Office

Everest Biotech Ltd

Cherwell Innovation Centre
77 Heyford Park
Upper Heyford
Oxfordshire
OX25 5HD
UK

Enquiries:

info@everestbiotech.com

Sales:

sales@everestbiotech.com

Tech support:

support@everestbiotech.com

Tel: +44 (0)1869 238326

www.everestbiotech.com

**Research Use Only. Not for
diagnostic or therapeutic use.**

EB12523 - Goat Anti-CLEC12A / MICL Antibody

Size: 100µg specific antibody in 200µl



Target Protein

Principal Names: CLEC12A, C-type lectin domain family 12, member A, CLL-1, CLL1, DCAL-2, MICL, C-type lectin domain family 12 member A, C-type lectin protein CLL-1, C-type lectin superfamily, C-type lectin-like molecule-1, dendritic cell-associated lectin 2, myeloid inhib

Official Symbol: CLEC12A

Accession Number(s): NP_612210.4; NP_963917.2; NP_001193939.1

Human GeneID(s): [160364](#)

Important Comments: This antibody is expected to recognize all reported isoforms (NP_612210.4; NP_963917.2; NP_001193939.1).

Immunogen

Peptide with sequence C-NPVQLGSTYFRE, from the C Terminus of the protein sequence according to NP_612210.4; NP_963917.2; NP_001193939.1.

Please note the [peptide](#) is available for sale.

Purification and Storage

Purified from goat serum by ammonium sulphate precipitation followed by antigen affinity chromatography using the immunizing peptide.

Supplied at 0.5 mg/ml in Tris saline, 0.02% sodium azide, pH7.3 with 0.5% bovine serum albumin.

Aliquot and store at -20°C. Minimize freezing and thawing.

Applications Tested

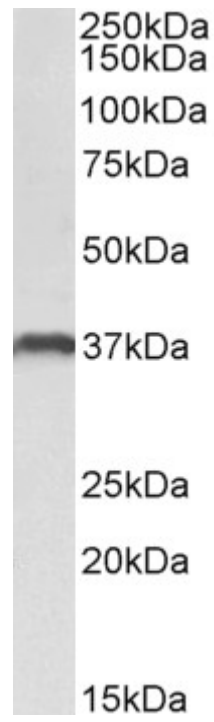
Peptide ELISA: antibody detection limit dilution 1:128000.

Western blot: Approx 37kDa band observed in lysates of cell line U937 (calculated MW of 30.8kDa according to NP_612210.4). The observed molecular weight corresponds to the glycosylated form. Recommended concentration: 0.3-1µg/ml.

Species Reactivity

Tested: Human

Expected from sequence similarity: Human



EB12523 (0.3 μ g/ml) staining of U937 lysate (35 μ g protein in RIPA buffer). Primary incubation was 1 hour.
Detected by chemiluminescence.