



UK Office

Everest Biotech Ltd

Cherwell Innovation Centre
77 Heyford Park
Upper Heyford
Oxfordshire
OX25 5HD
UK

Enquiries:

info@everestbiotech.com

Sales:

sales@everestbiotech.com

Tech support:

support@everestbiotech.com

Tel: +44 (0)1869 238326

Fax: +44 (0)1869 238327

US Office

Everest Biotech c/o Abcore

405 Maple Street, Suite A106
Ramona,
CA 92065
USA

Inquiries:

info@everestbiotech.com

Sales:

usasales@everestbiotech.com

Tech support:

support@everestbiotech.com

Tel: 888-320-4628 (toll-free)

Fax: 888-841-9041

www.everestbiotech.com

**Research Use Only. Not for
diagnostic or therapeutic use.**

EB09343 - Goat Anti-CLEC4C / BDCA2 Antibody

Size: 100µg specific antibody in 200µl



Target Protein

Principal Names: CLEC4C, C-type lectin domain family 4, member C, BDCA2, CD303, CLECSF11, CLECSF7, DLEC, HECL, MGC125789, MGC125791, MGC125792, MGC125793, PRO34150, C-type (calcium dependent, carbohydrate-recognition domain) lectin, superfamily member 11, C-type (calcium dependent, carbohydrate-recognition domain) lectin, superfamily member 7, C-type lectin domain family 4, member C, isoform 1, blood dendritic cell antigen 2 protein, dendritic cell lectin b

Official Symbol: CLEC4C

Accession Number(s): NP_569708.1; NP_987099.1

Human GeneID(s): [170482](#)

Important Comments: This antibody is expected to recognize isoform 1 and 2 (NP_569708.1; NP_987099.1).

Immunogen

Peptide with sequence QSWTKSQKNCSV, from the Internal region of the protein sequence according to NP_569708.1; NP_987099.1.

Please note the [peptide](#) is available for sale.

Purification and Storage

Purified from goat serum by ammonium sulphate precipitation followed by antigen affinity chromatography using the immunizing peptide.

Supplied at 0.5 mg/ml in Tris saline, 0.02% sodium azide, pH7.3 with 0.5% bovine serum albumin.

Aliquot and store at -20°C. Minimize freezing and thawing.

Applications Tested

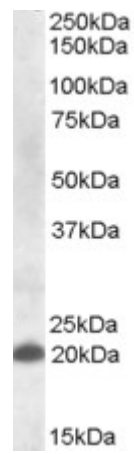
Peptide ELISA: antibody detection limit dilution 1:8000.

Western blot: Approx 20kDa band observed in Human Spleen lysates (calculated MW of 21.5kDa according to NP_987099.1). Recommended concentration: 1-3µg/ml.

Species Reactivity

Tested: Human

Expected from sequence similarity: Human



EB09343 (1 μ g/ml) staining of Human Spleen lysate (35 μ g protein in RIPA buffer). Primary incubation was 1 hour. Detected by chemiluminescence.