



UK Office

Everest Biotech Ltd

Cherwell Innovation Centre
77 Heyford Park
Upper Heyford
Oxfordshire
OX25 5HD
UK

Enquiries:

info@everestbiotech.com

Sales:

sales@everestbiotech.com

Tech support:

support@everestbiotech.com

Tel: +44 (0)1869 238326

www.everestbiotech.com

**Research Use Only. Not for
diagnostic or therapeutic use.**

EB07738 - Goat Anti-CLIC4 Antibody

Size: 100µg specific antibody in 200µl



Target Protein

Principal Names: CLIC4, chloride intracellular channel 4, CLIC4L, DKFZP566G223, FLJ38640, H1, huH1, p64H1, chloride intracellular channel 4 like

Official Symbol: CLIC4

Accession Number(s): NP_039234.1

Human GeneID(s): [25932](#)

Non-Human GeneID(s): 29876 (mouse), 83718 (rat)

Immunogen

Peptide with sequence NGLKEEDKEPLIE-C, from the N Terminus of the protein sequence according to NP_039234.1.

Please note the [peptide](#) is available for sale.

Purification and Storage

Purified from goat serum by ammonium sulphate precipitation followed by antigen affinity chromatography using the immunizing peptide.

Supplied at 0.5 mg/ml in Tris saline, 0.02% sodium azide, pH7.3 with 0.5% bovine serum albumin.

Aliquot and store at -20°C. Minimize freezing and thawing.

Applications Tested

Peptide ELISA: antibody detection limit dilution 1:64000.

Western blot: Approx 30kDa band observed in Human Kidney and Placenta lysates (calculated MW of 28.8kDa according to NP_039234.1). The observed molecular weight corresponds to earlier findings in literature with different antibodies (Edwards et al, Am J Physiol. 1999 Mar;276(3 Pt 2):F398-408.; PMID: 10070163). Recommended concentration: 0.1-0.3µg/ml.

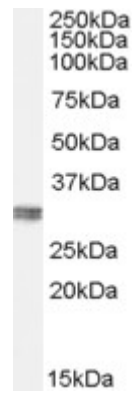
IHC: Paraffin embedded Human Heart. Recommended concentration: 5µg/ml.

Immunofluorescence: Min6 cells transiently expressing mouse Clic4 shows cytoplasmic staining of two cells. Recommended concentration, 5µg/ml with overnight incubation.

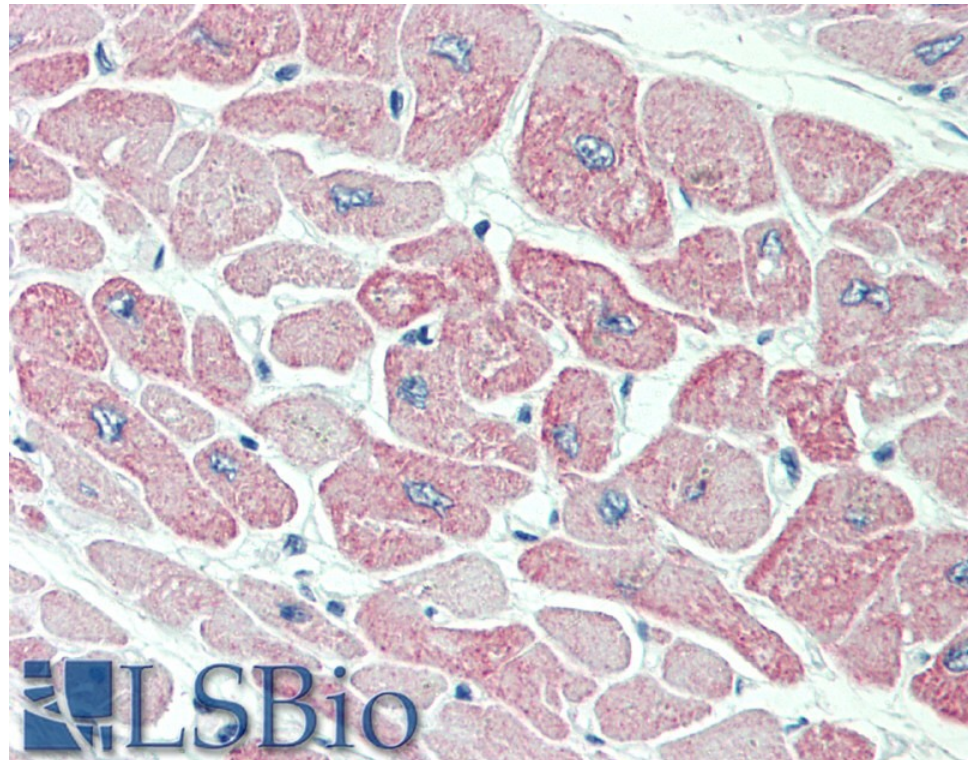
Species Reactivity

Tested: Human, Mouse

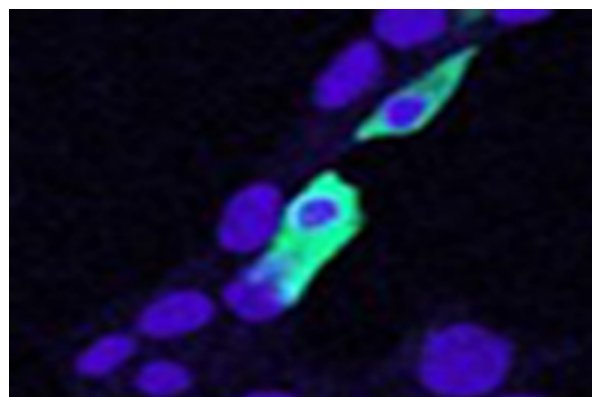
Expected from sequence similarity: Human, Mouse, Rat, Dog



EB07738 (0.1 μ g/ml) staining of Human Kidney lysate (35 μ g protein in RIPA buffer). Primary incubation was 1 hour. Detected by chemiluminescence.



EB07738 (5 μ g/ml) staining of paraffin embedded Human Heart. Steamed antigen retrieval with citrate buffer pH 6, AP-staining.



EB07738 (5 μ g/ml) staining of min6 cells transiently expressing mouse Clic4. Nuclear counter staining by Hoechst. Data kindly provided by Dr. Virginie Nepote, Lausanne University, Switzerland.