



UK Office

Everest Biotech Ltd

Cherwell Innovation Centre
77 Heyford Park
Upper Heyford
Oxfordshire
OX25 5HD
UK

Enquiries:

info@everestbiotech.com

Sales:

sales@everestbiotech.com

Tech support:

support@everestbiotech.com

Tel: +44 (0)1869 238326

Fax: +44 (0)1869 238327

US Office

Everest Biotech c/o Abcore

405 Maple Street, Suite A106
Ramona,
CA 92065
USA

Inquiries:

info@everestbiotech.com

Sales:

usasales@everestbiotech.com

Tech support:

support@everestbiotech.com

Tel: 888-320-4628 (toll-free)

Fax: 888-841-9041

www.everestbiotech.com

**Research Use Only. Not for
diagnostic or therapeutic use.**

EB06263 - Goat Anti-Clk1 / STK35 Antibody

Size: 100µg specific antibody in 200µl



Target Protein

Principal Names: STK35, Clk1, bA550O8.2, bA550O8.2 CLIK1, serine/threonine kinase 35, CLP-36 interacting kinase, CLIK1, STK35L1, OTTHUMP00000030006, serine threonine kinase 35 long form

Official Symbol: STK35

Accession Number(s): NP_543026.2

Human GeneID(s): [140901](#)

Non-Human GeneID(s): 67333 (mouse)

Immunogen

Peptide with sequence ELETRMDQVTCAA, from the C Terminus of the protein sequence according to NP_543026.2.

Please note the [peptide](#) is available for sale.

Purification and Storage

Purified from goat serum by ammonium sulphate precipitation followed by antigen affinity chromatography using the immunizing peptide.

Supplied at 0.5 mg/ml in Tris saline, 0.02% sodium azide, pH7.3 with 0.5% bovine serum albumin.

Aliquot and store at -20°C. Minimize freezing and thawing.

Applications Tested

Peptide ELISA: antibody detection limit dilution 1:16000.

Western blot: Approx 55kDa band observed in Human Breast cancer and in Mouse and Pig Testis lysates, and approx. 58kDa in nuclear lysates of cell line HEK293 (calculated MW of 58.1kDa according to Human NP_543026.2, 59.5kDa according to Mouse NP_899085.3 and 59.2kDa according to XP_005672850.1 Pig XP_005672850.1).

Recommended concentration: 1-3µg/ml. Primary incubation 1 hour at room temperature.

This product has been successfully used in WB on Human: Goyal P et al, PLoS One.

2009 Sep 16;4(9):e6981. PMID: 19756140.

IHC: In paraffin embedded Human Testis shows granular cytoplasmic staining of Leydig cells. Recommended concentration: 10µg/ml.

Immunofluorescence: Strong expression of the protein seen in the nuclei of U2OS cells. Recommended concentration: 10µg/ml.

Flow Cytometry: Flow cytometric analysis of HEK293 cells. Recommended concentration: 10ug/ml.

Species Reactivity

Tested: Human, Mouse, Pig

Expected from sequence similarity: Human, Mouse, Rat, Dog, Pig, Cow

Specific Reference

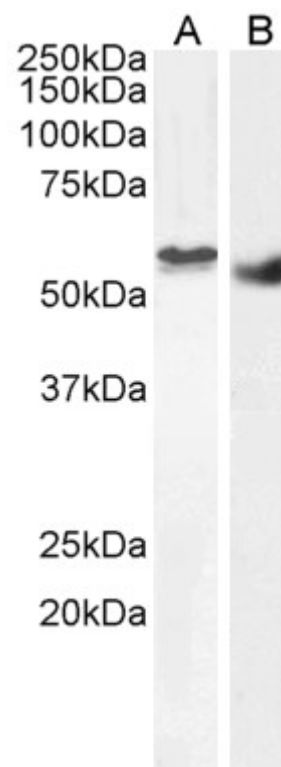
This antibody has been successfully used in WB on Human:

Goyal P, Behring A, Kumar A, Siess W.

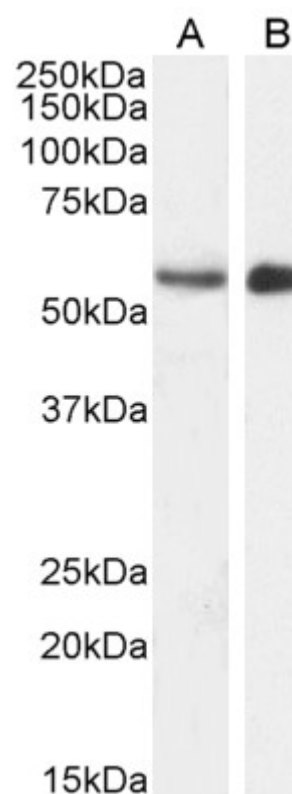
Identifying and characterizing a novel protein kinase STK35L1 and deciphering its orthologs and close-homologs in vertebrates.

PLoS One. 2009 Sep 16;4(9):e6981.

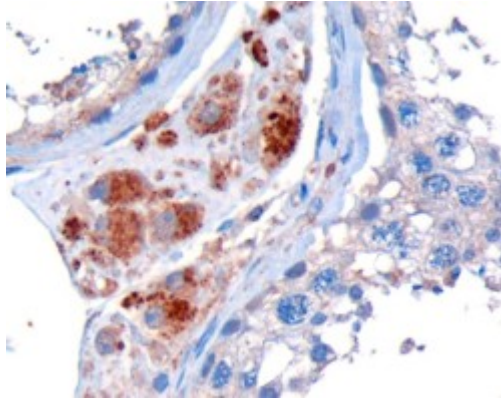
PMID: 19756140



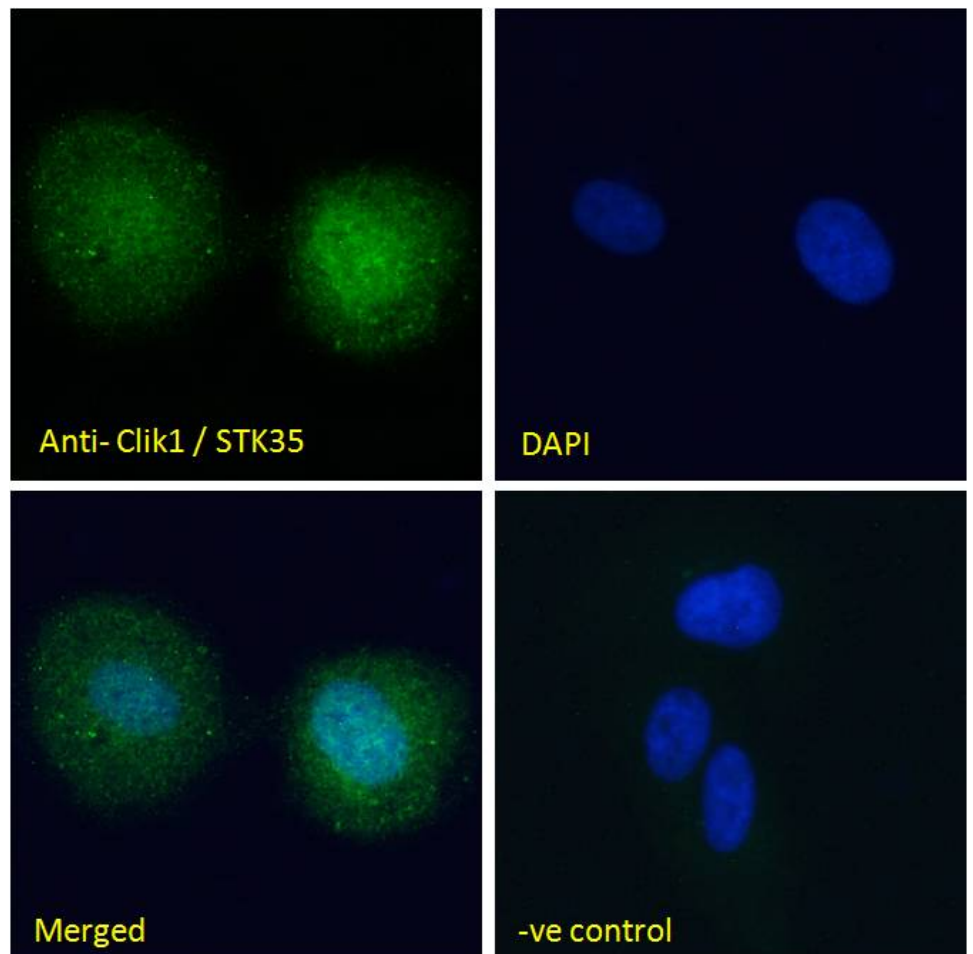
EB06263 (2 μ g/ml) staining of nuclear HEK293 (A) and (1 μ g/ml) Human Breast cancer (B) lysate (35 μ g protein in RIPA buffer). Detected by chemiluminescence.



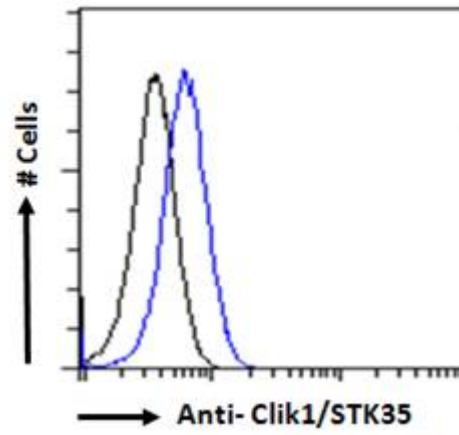
EB06263 (1 μ g/ml) staining of Mouse (A) and (2 μ g/ml) Pig (B) Testes lysate (35 μ g protein in RIPA buffer). Detected by chemiluminescence.



EB06263 (10 μ g/ml) staining of paraffin embedded Human Testis. Microwaved antigen retrieval with Tris/EDTA buffer pH9, HRP-staining.



EB06263 Immunofluorescence analysis of paraformaldehyde fixed U2OS cells, permeabilized with 0.15% Triton. Primary incubation 1hr (10 μ g/ml) followed by Alexa Fluor 488 secondary antibody (2 μ g/ml), showing nuclear staining. The nuclear stain is DAPI (blue). Negative control: Unimmunized goat IgG (10 μ g/ml) followed by Alexa Fluor 488 secondary antibody (2 μ g/ml).



EB06263 Flow cytometric analysis of paraformaldehyde fixed HEK293 cells (blue line), permeabilized with 0.5% Triton. Primary incubation 1hr (10ug/ml) followed by Alexa Fluor 488 secondary antibody (1ug/ml). IgG control: Unimmunized goat IgG (black line) followed by Alexa Fluor 488 secondary antibody.