



Everest Biotech Ltd
Cherwell Innovation Centre
77 Heyford Park
Upper Heyford
Oxfordshire
OX25 5HD, United Kingdom

everestbiotech.com

sales@everestbiotech.com

support@everestbiotech.com

Tel +44 1869 238326

Fax +44 1869 238327

Research Use Only. Not for diagnostic or therapeutic use.

Storage: For long-term storage keep aliquots at -20°C. (Store no longer than 12 months at 4°C). Minimize freezing and thawing.

EB06229 - Goat Anti-CLIM1 / PDLIM1 Antibody

Size: 100µg specific antibody in 200µl



Target Protein

Principal Names: enigma, elfin, PDZ and LIM domain 1, carboxy terminal LIM domain protein 1, PDZ and LIM domain 1 (elfin), hCLIM1, CLP-36, ELFIN, CLP36, CLIM1, PDLIM1

Official Symbol: PDLIM1

Accession Number(s): NP_066272.1

Human GeneID(s): [9124](#)

Immunogen

Peptide with sequence C-TPPEGYEVTVFPK, from the C Terminus of the protein sequence according to NP_066272.1.

Please note the [peptide](#) is available for sale.

Purification and Storage

Purified from goat serum by ammonium sulphate precipitation followed by antigen affinity chromatography using the immunizing peptide.

Supplied at 0.5 mg/ml in Tris saline, 0.02% sodium azide, pH7.3 with 0.5% bovine serum albumin.

Aliquot and store at -20°C. Minimize freezing and thawing.

Applications Tested

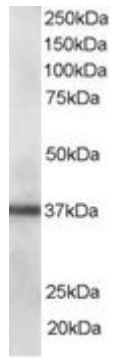
Peptide ELISA: antibody detection limit dilution 1:64000.

Western blot: Approx 37kDa band observed in human lung and heart lysates (calculated MW of 36.1kDa according to NP_066272.1). Recommended for use at 0.1-0.3µg/ml.

Species Reactivity

Tested: Human

Expected from sequence similarity: Human



EB06229 staining (0.1 μ g/ml) of human lung lysate (RIPA buffer, 35 μ g total protein per lane). Primary incubated for 1 hour. Detected by western blot using chemiluminescence.