

UK Office

Everest Biotech Ltd

Cherwell Innovation Centre
77 Heyford Park
Upper Heyford
Oxfordshire
OX25 5HD
UK

Enquiries:

info@everestbiotech.com

Sales:

sales@everestbiotech.com

Tech support:

support@everestbiotech.com

Tel: +44 (0)1869 238326

www.everestbiotech.com

**Research Use Only. Not for
diagnostic or therapeutic use.**

EB12170 - Goat Anti-CLOCK (aa458-472) Antibody

Size: 100µg specific antibody in 200µl



Target Protein

Principal Names: CLOCK, clock homolog (mouse), KAT13D, bHLHe8, circadian locomoter output cycles kaput protein, circadian locomoter output cycles protein kaput, class E basic helix-loop-helix protein 8

Official Symbol: CLOCK

Accession Number(s): NP_004889.1

Human GeneID(s): [9575](#)

Non-Human GeneID(s): 12753 (mouse)

Important Comments: Reported variants represent identical protein: NP_004889.1, NP_001254772.1

Immunogen

Peptide with sequence C-DTSTPPRQHLP AHEK, from the internal region of the protein sequence according to NP_004889.1.

Please note the [peptide](#) is available for sale.

Purification and Storage

Purified from goat serum by ammonium sulphate precipitation followed by antigen affinity chromatography using the immunizing peptide.

Supplied at 0.5 mg/ml in Tris saline, 0.02% sodium azide, pH7.3 with 0.5% bovine serum albumin.

Aliquot and store at -20°C. Minimize freezing and thawing.

Applications Tested

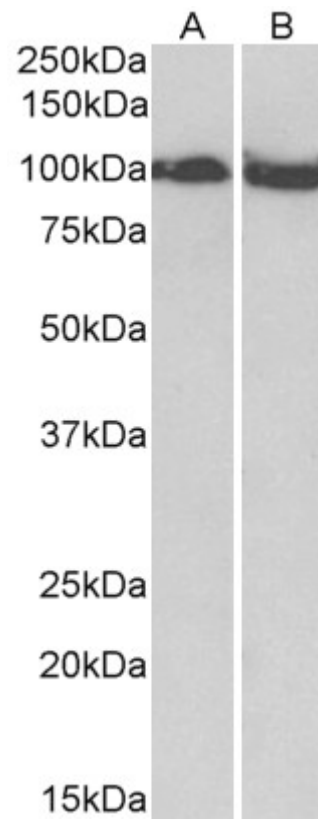
Peptide ELISA: antibody detection limit dilution 1:128000.

Western blot: Approx 100kDa band observed in Mouse and Rat Skeletal Muscle lysates (calculated MW of 96.4kDa according to Mouse NP_031741.1 and 97.0kDa according to Rat NP_068628.1). Recommended concentration: 0.03-0.1µg/ml.

Species Reactivity

Tested: Mouse, Rat

Expected from sequence similarity: Human, Mouse, Cow



EB12170 (0.03 μ g/ml) staining of Mouse (A) and Rat (B) Skeletal Muscle lysate (35 μ g protein in RIPA buffer). Primary incubation was 1 hour. Detected by chemiluminescence.