



UK Office

Everest Biotech Ltd

Cherwell Innovation Centre
77 Heyford Park
Upper Heyford
Oxfordshire
OX25 5HD
UK

Enquiries:

info@everestbiotech.com

Sales:

sales@everestbiotech.com

Tech support:

support@everestbiotech.com

Tel: +44 (0)1869 238326

Fax: +44 (0)1869 238327

US Office

Everest Biotech c/o Abcore

405 Maple Street, Suite A106
Ramona,
CA 92065
USA

Inquiries:

info@everestbiotech.com

Sales:

usasales@everestbiotech.com

Tech support:

support@everestbiotech.com

Tel: 888-320-4628 (toll-free)

Fax: 888-841-9041

www.everestbiotech.com

**Research Use Only. Not for
diagnostic or therapeutic use.**

EB11646 - Goat Anti-Clusterin / APOJ (aa44-58) Antibody

Size: 100µg specific antibody in 200µl



Target Protein

Principal Names: aging-associated protein 4, APOJ, apo-J, apolipoprotein J, CLI, CLU, clusterin, com, complement cytolysis inhibitor, KUB1, MGC24903, NA1/NA2, OTTHUMP00000128311, OTTHUMP00000225247, OTTHUMP00000225248, OTTHUMP00000225249, SGP2, SGP-2, SP-40, TRPM2, TRPM-2

Official Symbol: CLU

Accession Number(s): NP_976084.1

Human GeneID(s): [1191](#)

Immunogen

Peptide with sequence C-KEIQNAVNGVKQIKT, from the internal region of the protein sequence according to NP_976084.1.

Please note the [peptide](#) is available for sale.

Purification and Storage

Purified from goat serum by ammonium sulphate precipitation followed by antigen affinity chromatography using the immunizing peptide.

Supplied at 0.5 mg/ml in Tris saline, 0.02% sodium azide, pH7.3 with 0.5% bovine serum albumin.

Aliquot and store at -20°C. Minimize freezing and thawing.

Applications Tested

Peptide ELISA: antibody detection limit dilution 1:64000.

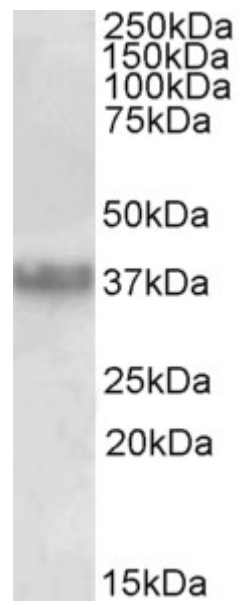
Western blot: Approx 37kDa band observed in human Prostate lysates (calculated MW of 52.5 according to NP_976084.1). The observed molecular weight corresponds to earlier findings in literature with different antibodies (PMID: 9713325 and PMID: 11560857).

Recommended concentration: 0.03-0.1µg/ml.

Species Reactivity

Tested: Human

Expected from sequence similarity: Human



EB11646 (0.03 μ g/ml) staining of Human Prostate lysate (35 μ g protein in RIPA buffer). Primary incubation was 1 hour. Detected by chemiluminescence.