



Everest Biotech Ltd
Cherwell Innovation Centre
77 Heyford Park
Upper Heyford
Oxfordshire
OX25 5HD, United Kingdom

everestbiotech.com

sales@everestbiotech.com

support@everestbiotech.com

Tel +44 1869 238326

Fax +44 1869 238327

Research Use Only. Not for diagnostic or therapeutic use.

Storage: For long-term storage keep aliquots at -20°C. (Store no longer than 12 months at 4°C). Minimize freezing and thawing.

EB08920 - Goat Anti-Clusterin / ApoJ (mouse) Antibody

Size: 100µg specific antibody in 200µl



Target Protein

Principal Names: testosterone repressed prostate message, complement lysis inhibitor, Apolipoprotein J, Sugg-2, Sgp2, Sgp-2, SP-40, D14Ucla3, Cli, A1893575, Clu, clusterin, ApoJ

Official Symbol: Clu

Accession Number(s): NP_038520.1

Non-Human GeneID(s): 12759 (mouse), 24854 (rat)

Immunogen

Peptide with sequence C-EKALQEYRRKSRAE, from the C Terminus of the protein sequence according to NP_038520.1.

Please note the [peptide](#) is available for sale.

Purification and Storage

Purified from goat serum by ammonium sulphate precipitation followed by antigen affinity chromatography using the immunizing peptide.

Supplied at 0.5 mg/ml in Tris saline, 0.02% sodium azide, pH7.3 with 0.5% bovine serum albumin.

Aliquot and store at -20°C. Minimize freezing and thawing.

Applications Tested

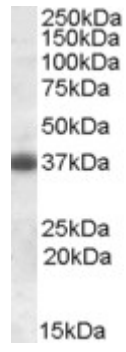
Peptide ELISA: antibody detection limit dilution 1:8000.

Western blot: Approx. 37kDa band observed in Mouse Brain and Testis lysates and in Rat Brain and Ovary lysates (calculated MW of 51.6kDa according to Mouse NP_038520.1). The observed molecular weight corresponds to earlier findings in literature with different antibodies (Miyata et al, Circulation. 2001 Sep 18;104(12):1407-12.; PMID: 11560857). Recommended concentration: 0.3-1µg/ml.

Species Reactivity

Tested: Rat

Expected from sequence similarity: Mouse, Rat



EB08920 (0.3 μ g/ml) staining of Rat Brain lysate (35 μ g protein in RIPA buffer). Primary incubation was 1 hour.
Detected by chemiluminescence.