



## UK Office

### Everest Biotech Ltd

Cherwell Innovation Centre  
77 Heyford Park  
Upper Heyford  
Oxfordshire  
OX25 5HD  
UK

Enquiries:

[info@everestbiotech.com](mailto:info@everestbiotech.com)

Sales:

[sales@everestbiotech.com](mailto:sales@everestbiotech.com)

Tech support:

[support@everestbiotech.com](mailto:support@everestbiotech.com)

Tel: +44 (0)1869 238326

[www.everestbiotech.com](http://www.everestbiotech.com)

**Research Use Only. Not for  
diagnostic or therapeutic use.**

## EB08876 - Goat Anti-CMA1 Antibody

Size: 100µg specific antibody in 200µl



### Target Protein

**Principal Names:** CMA1, chymase 1, mast cell, CYH, MCT1, MGC119890, MGC119891, chymase 1 preproprotein transcript E, chymase 1 preproprotein transcript I, chymase, heart, chymase, mast cell, mast cell protease I

**Official Symbol:** CMA1

**Accession Number(s):** NP\_001827.1

**Human GeneID(s):** [1215](#)

### Immunogen

Peptide with sequence C-QFRHPKYNTSTLHHD, from the internal region of the protein sequence according to NP\_001827.1.

Please note the [peptide](#) is available for sale.

### Purification and Storage

Purified from goat serum by ammonium sulphate precipitation followed by antigen affinity chromatography using the immunizing peptide.

Supplied at 0.5 mg/ml in Tris saline, 0.02% sodium azide, pH7.3 with 0.5% bovine serum albumin.

Aliquot and store at -20°C. Minimize freezing and thawing.

### Applications Tested

**Peptide ELISA:** antibody detection limit dilution 1:128000.

**Western blot:** In transfected HEK293 transiently expressing full-length Human CMA1 (myc and DYKDDDDK tagged), a band of approx. 35kDa was observed. No bands were observed in mock-transfected HEK293 and the same band was observed using anti-DYKDDDDK tag antibody. Recommended concentration, 0.5-1µg/ml.

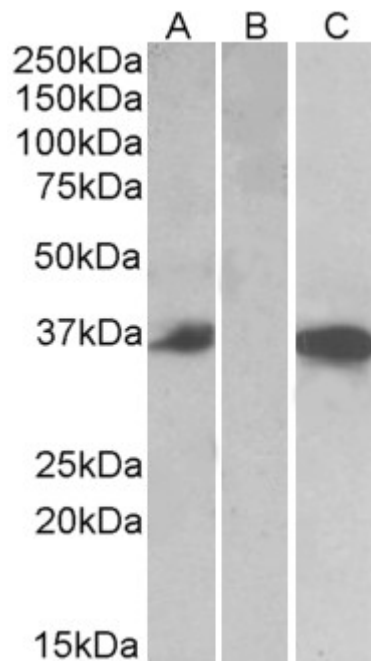
**IHC:** Paraffin embedded Human Testis and Tonsil (Mast cells). Recommended concentration: 1.5µg/ml.

Purchase the +ve control! The transfected lysate used to QC this product is available for sale. Please email [sales@everestbiotech.com](mailto:sales@everestbiotech.com) to request datasheet, pricing and delivery information.

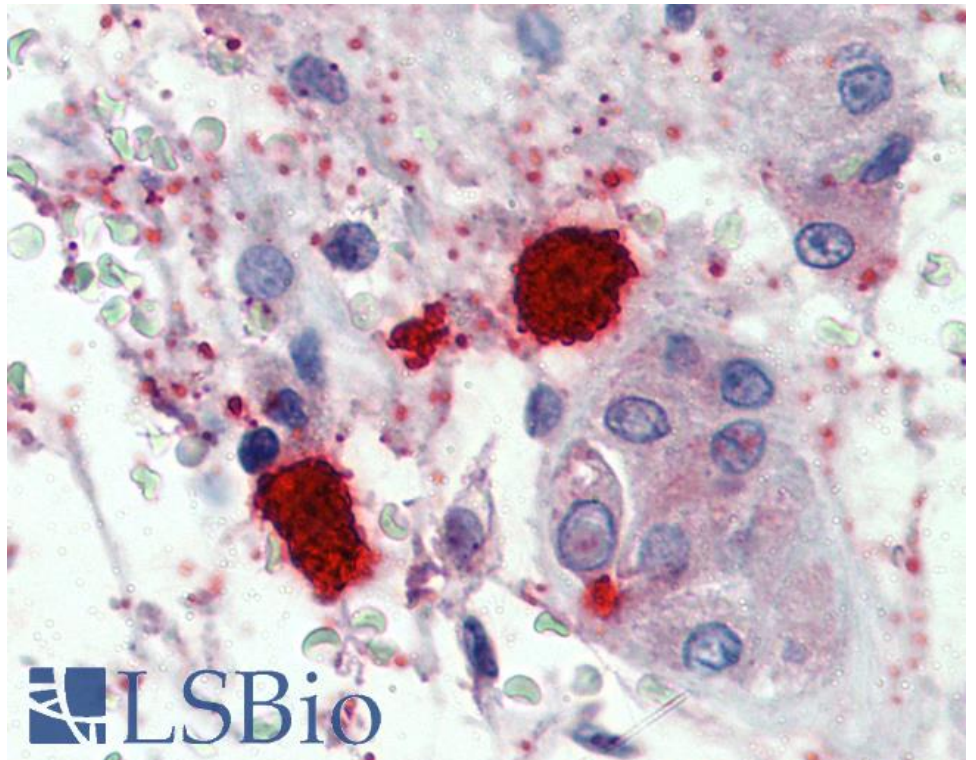
### Species Reactivity

**Tested:** Human

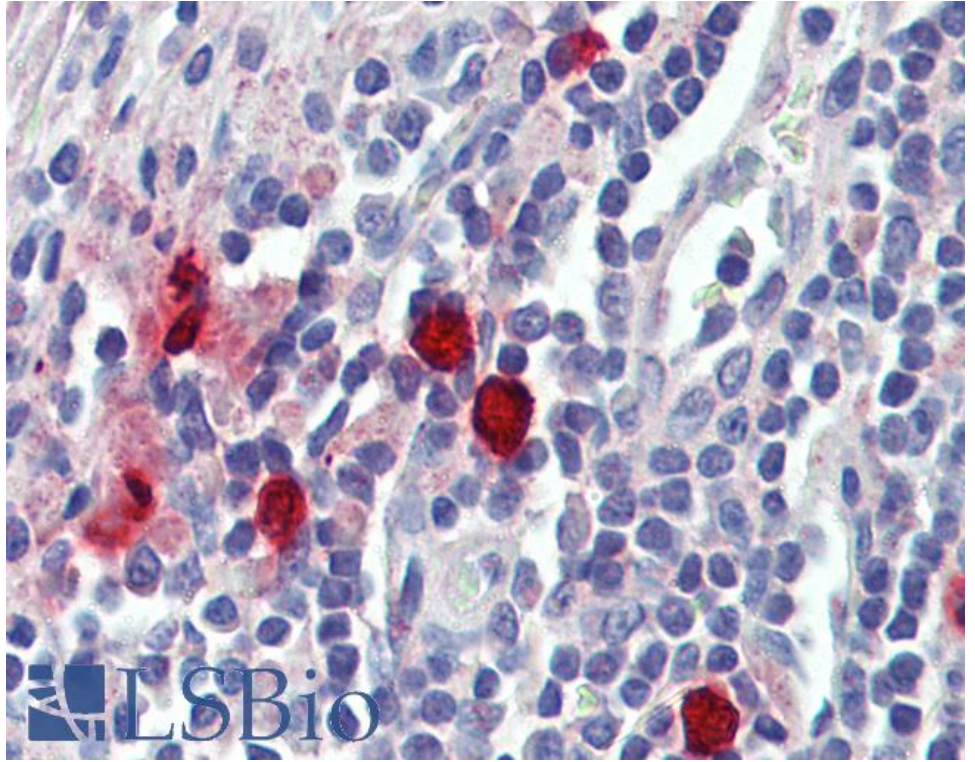
**Expected from sequence similarity:** Human



HEK293 lysate (10ug protein in RIPA buffer) over expressing Human CMA1 with DYKDDDDK tag probed with EB08876 (0.5ug/ml) in Lane A and probed with anti- DYKDDDDK Tag (1/3000) in lane C. Mock-transfected HEK293 probed with EB08876(1mg/ml) in Lane B. Primary incubations were for 1 hour. Detected by chemiluminescence.



EB08876 (1.5µg/ml) staining of paraffin embedded Human Testis (Mast cells). Steamed antigen retrieval with citrate buffer pH 6, AP-staining.



EB08876 (1.5µg/ml) staining of paraffin embedded Human Tonsil (Mast cells). Steamed antigen retrieval with citrate buffer pH 6, AP-staining.