



UK Office

Everest Biotech Ltd

Cherwell Innovation Centre
77 Heyford Park
Upper Heyford
Oxfordshire
OX25 5HD
UK

Enquiries:

info@everestbiotech.com

Sales:

sales@everestbiotech.com

Tech support:

support@everestbiotech.com

Tel: +44 (0)1869 238326

www.everestbiotech.com

**Research Use Only. Not for
diagnostic or therapeutic use.**

EB12707 - Goat Anti-CNGB3 (aa175-186) Antibody

Size: 100µg specific antibody in 200µl



Target Protein

Principal Names: CNGB3, cyclic nucleotide gated channel beta 3, ACHM1, CNG channel beta-3, cone photoreceptor cGMP-gated cation channel beta-subunit, cyclic nucleotide-gated cation channel beta-3, cyclic nucleotide-gated cation channel modulatory subunit

Official Symbol: CNGB3

Accession Number(s): NP_061971.3

Human GeneID(s): [54714](#)

Immunogen

Peptide with sequence C-ESDDKPTEHYR, from the internal region of the protein sequence according to NP_061971.3.

Please note the [peptide](#) is available for sale.

Purification and Storage

Purified from goat serum by ammonium sulphate precipitation followed by antigen affinity chromatography using the immunizing peptide.

Supplied at 0.5 mg/ml in Tris saline, 0.02% sodium azide, pH7.3 with 0.5% bovine serum albumin.

Aliquot and store at -20°C. Minimize freezing and thawing.

Applications Tested

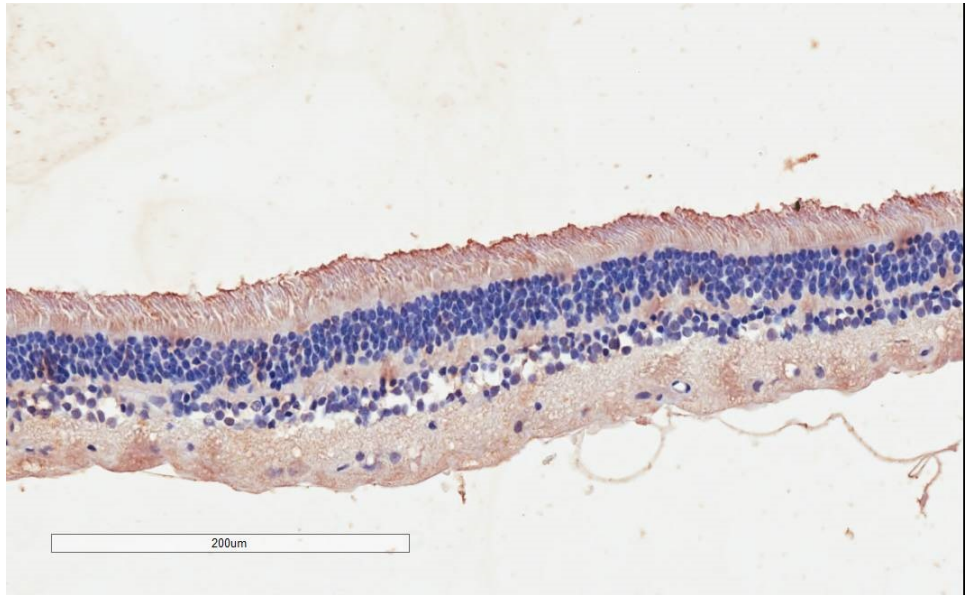
Peptide ELISA: antibody detection limit dilution 1:8000.

IHC: In paraffin embedded Human Retina shows primarily staining of the pigmented epithelial cells. Recommended concentration: 2-4µg/ml.

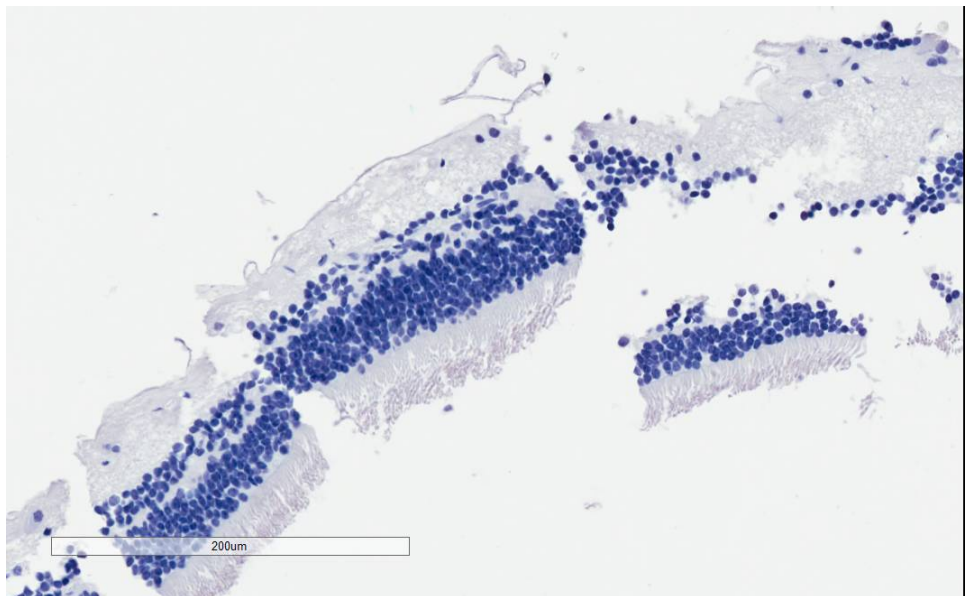
Species Reactivity

Tested: Human

Expected from sequence similarity: Human



EB12707 (2µg/ml) staining of paraffin embedded Human Retina. Microwaved antigen retrieval with citrate buffer pH 6, HRP-staining.



EB12707 Negative Control showing staining of paraffin embedded Human Retina, with no primary antibody.