



UK Office

Everest Biotech Ltd

Cherwell Innovation Centre
77 Heyford Park
Upper Heyford
Oxfordshire
OX25 5HD
UK

Enquiries:

info@everestbiotech.com

Sales:

sales@everestbiotech.com

Tech support:

support@everestbiotech.com

Tel: +44 (0)1869 238326

Fax: +44 (0)1869 238327

US Office

Everest Biotech c/o Abcore

405 Maple Street, Suite A106
Ramona,
CA 92065
USA

Inquiries:

info@everestbiotech.com

Sales:

usasales@everestbiotech.com

Tech support:

support@everestbiotech.com

Tel: 888-320-4628 (toll-free)

Fax: 888-841-9041

www.everestbiotech.com

**Research Use Only. Not for
diagnostic or therapeutic use.**

EB07545 - Goat Anti-CNTFR Antibody

Size: 100µg specific antibody in 200µl



Target Protein

Principal Names: CNTFR, ciliary neurotrophic factor receptor, MGC1774, CNTFR alpha, ciliary neurotrophic factor receptor alpha precursor

Official Symbol: CNTFR

Accession Number(s): NP_671693.1; NP_001833.1

Human GeneID(s): [1271](#)

Non-Human GeneID(s): 12804 (mouse), 313173 (rat)

Important Comments: This antibody is expected to recognise both reported isoforms (NP_671693.1; NP_001833.1).

Immunogen

Peptide with sequence CRSNTYPKGFY, from the internal region of the protein sequence according to NP_671693.1; NP_001833.1.

Please note the [peptide](#) is available for sale.

Purification and Storage

Purified from goat serum by ammonium sulphate precipitation followed by antigen affinity chromatography using the immunizing peptide.

Supplied at 0.5 mg/ml in Tris saline, 0.02% sodium azide, pH7.3 with 0.5% bovine serum albumin.

Aliquot and store at -20°C. Minimize freezing and thawing.

Applications Tested

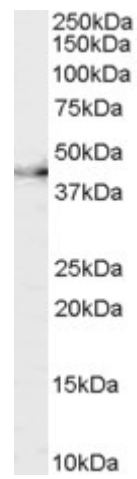
Peptide ELISA: antibody detection limit dilution 1:16000.

Western blot: Approx 38-40kDa band observed in mouse brain lysates (calculated MW of 40.8kDa according to mouse NP_057882.1). Recommended concentration: 0.3-1µg/ml.

Species Reactivity

Tested: Mouse

Expected from sequence similarity: Human, Mouse, Rat, Dog



EB07545 (0.3µg/ml) staining of mouse brain lysate (35µg protein in RIPA buffer). Primary incubation was 1 hour.
Detected by chemiluminescence.