



UK Office

Everest Biotech Ltd

Cherwell Innovation Centre
77 Heyford Park
Upper Heyford
Oxfordshire
OX25 5HD
UK

Enquiries:

info@everestbiotech.com

Sales:

sales@everestbiotech.com

Tech support:

support@everestbiotech.com

Tel: +44 (0)1869 238326

Fax: +44 (0)1869 238327

US Office

Everest Biotech c/o Abcore

405 Maple Street, Suite A106
Ramona,
CA 92065
USA

Inquiries:

info@everestbiotech.com

Sales:

usasales@everestbiotech.com

Tech support:

support@everestbiotech.com

Tel: 888-320-4628 (toll-free)

Fax: 888-841-9041

www.everestbiotech.com

**Research Use Only. Not for
diagnostic or therapeutic use.**

EB06889-T - Goat Anti-Cofilin 2 (muscle) Antibody - Trial

Size: 20µg specific antibody in 40µl



Target Protein

Principal Names: cofilin 2 (muscle), HGNC:1875, CFL2, NEM7, cofilin 2

Official Symbol: CFL2

Accession Number(s): NP_068733.1; NP_619579.1

Human GeneID(s): [1073](#)

Important Comments: This antibody is expected to recognise both reported isoforms (NP_068733 and NP_619579)

Immunogen

Peptide with sequence C-DIKDRSTLGEK, from the C Terminus of the protein sequence according to NP_068733.1; NP_619579.1.

Please note the [peptide](#) is available for sale.

Purification and Storage

Purified from goat serum by ammonium sulphate precipitation followed by antigen affinity chromatography using the immunizing peptide.

Supplied at 0.5 mg/ml in Tris saline, 0.02% sodium azide, pH7.3 with 0.5% bovine serum albumin.

Aliquot and store at -20°C. Minimize freezing and thawing.

Applications Tested

Peptide ELISA: antibody detection limit dilution 1:128000.

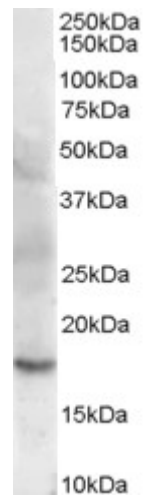
Western blot: Approx 18kDa band observed in Human Skeletal Muscle lysates and in Rat Heart lysates (calculated MW of 18.7kDa according to NP_068733.1 and NP_619579.1). Recommended concentration: 0.01-0.03µg/ml.

IHC: Paraffin embedded Human Heart. Recommended concentration: 3.75µg/ml.

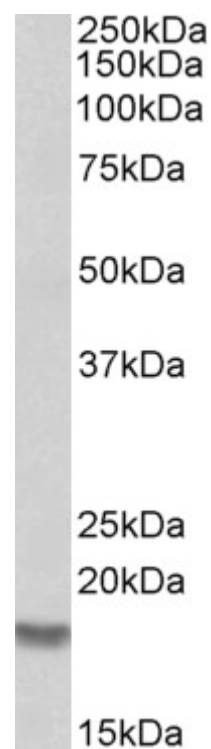
Species Reactivity

Tested: Human, Rat

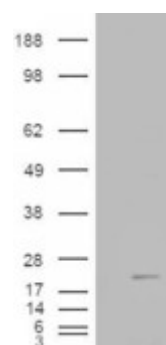
Expected from sequence similarity: Human, Mouse, Rat, Dog, Pig



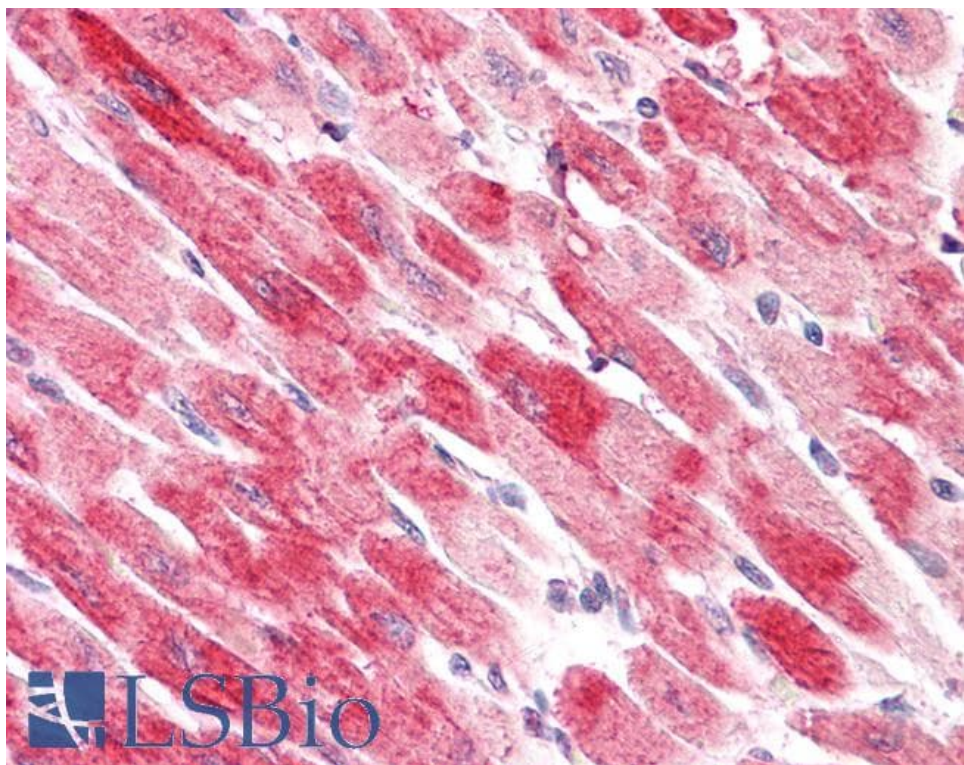
EB06889 (0.003 μ g/ml) staining of Human Skeletal Muscle lysate (35 μ g protein in RIPA buffer). Primary incubation was 1 hour. Detected by chemiluminescence.



EB06889 (0.001 μ g/ml) staining of Rat Skeletal Muscle lysate (35 μ g protein in RIPA buffer). Primary incubation was 1 hour. Detected by chemiluminescence.



HEK293 overexpressing Human Muscle Cofilin 2 (RC222215) and probed with EB06889 (mock transfection in first lane), tested by Origene.



EB06889 (3.75µg/ml) staining of paraffin embedded Human Heart. Steamed antigen retrieval with citrate buffer pH 6, AP-staining.