



## UK Office

### Everest Biotech Ltd

Cherwell Innovation Centre  
77 Heyford Park  
Upper Heyford  
Oxfordshire  
OX25 5HD  
UK

Enquiries:

[info@everestbiotech.com](mailto:info@everestbiotech.com)

Sales:

[sales@everestbiotech.com](mailto:sales@everestbiotech.com)

Tech support:

[support@everestbiotech.com](mailto:support@everestbiotech.com)

Tel: +44 (0)1869 238326

Fax: +44 (0)1869 238327

## US Office

### Everest Biotech c/o Abcore

405 Maple Street, Suite A106  
Ramona,  
CA 92065  
USA

Inquiries:

[info@everestbiotech.com](mailto:info@everestbiotech.com)

Sales:

[usasales@everestbiotech.com](mailto:usasales@everestbiotech.com)

Tech support:

[support@everestbiotech.com](mailto:support@everestbiotech.com)

Tel: 888-320-4628 (toll-free)

Fax: 888-841-9041

[www.everestbiotech.com](http://www.everestbiotech.com)

**Research Use Only. Not for  
diagnostic or therapeutic use.**

## EB08147 - Goat Anti-COL4A3BP (aa662-672) Antibody

Size: 100µg specific antibody in 200µl



### Target Protein

**Principal Names:** COL4A3BP, collagen, type IV, alpha 3 (Goodpasture antigen) binding protein, CERT, CERTL, FLJ20597, GPBP, STARD11, Goodpasture antigen-binding protein, START domain containing 11, alpha 3 type IV collagen binding protein, ceramide transporter

**Official Symbol:** CERT1

**Accession Number(s):** NP\_005704.1; NP\_112729.1

**Human GeneID(s):** [10087](#)

**Non-Human GeneID(s):** 68018 (mouse)

**Important Comments:** This antibody is expected to recognise both reported isoforms (NP\_005704.1 and NP\_112729.1)

### Immunogen

Peptide with sequence DHDSAPLNNRC, from the internal region of the protein sequence according to NP\_005704.1; NP\_112729.1 .

Please note the [peptide](#) is available for sale.

### Purification and Storage

Purified from goat serum by ammonium sulphate precipitation followed by antigen affinity chromatography using the immunizing peptide.

Supplied at 0.5 mg/ml in Tris saline, 0.02% sodium azide, pH7.3 with 0.5% bovine serum albumin.

Aliquot and store at -20°C. Minimize freezing and thawing.

### Applications Tested

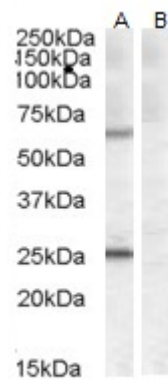
**Peptide ELISA:** antibody detection limit dilution 1:32000.

**Western blot:** Approx 60-65kDa band observed in Mouse Heart lysates (calculated MW of 71.1kDa according to Mouse NP\_075909.1). An additional band of unknown identity was also consistently observed at 25kDa. Both bands were successfully blocked by incubation with the immunising peptide. Recommended concentration: 0.3-1µg/ml. Primary incubation 1 hour at room temperature.

### Species Reactivity

**Tested:** Mouse

**Expected from sequence similarity:** Human, Mouse



EB08147 (0.5µg/ml) staining of Mouse Heart lysate (A) + peptide (B) (35µg protein in RIPA buffer). Detected by chemiluminescence.