



UK Office

Everest Biotech Ltd

Cherwell Innovation Centre
77 Heyford Park
Upper Heyford
Oxfordshire
OX25 5HD
UK

Enquiries:

info@everestbiotech.com

Sales:

sales@everestbiotech.com

Tech support:

support@everestbiotech.com

Tel: +44 (0)1869 238326

Fax: +44 (0)1869 238327

US Office

Everest Biotech c/o Abcore

405 Maple Street, Suite A106
Ramona,
CA 92065
USA

Inquiries:

info@everestbiotech.com

Sales:

usasales@everestbiotech.com

Tech support:

support@everestbiotech.com

Tel: 888-320-4628 (toll-free)

Fax: 888-841-9041

www.everestbiotech.com

**Research Use Only. Not for
diagnostic or therapeutic use.**

EB06848 - Goat Anti-Complement factor H Antibody

Size: 100µg specific antibody in 200µl



Target Protein

Principal Names: complement factor H, HGNC:4883, CFH, CFHL3, FHL1, HF, HF1, HF2, HUS, H factor 1 (complement), H factor 2 (complement), H factor-1 (complement), factor H-like 1, AHUS1, ARMD4, ARMS1, FH, age-related maculopathy susceptibility 1, beta-1-H-globulin, beta-1H, complement factor H, isoform b, factor H, factor H-like 1

Official Symbol: CFH

Accession Number(s): NP_000177.2

Human GeneID(s): [3075](#)

Important Comments: This antibody is expected to recognize isoform a (NP_000177.2) only.

Immunogen

Peptide with sequence C-HLVPDRKKDQYK, from the internal region of the protein sequence according to NP_000177.2.

Please note the [peptide](#) is available for sale.

Purification and Storage

Purified from goat serum by ammonium sulphate precipitation followed by antigen affinity chromatography using the immunizing peptide.

Supplied at 0.5 mg/ml in Tris saline, 0.02% sodium azide, pH7.3 with 0.5% bovine serum albumin.

Aliquot and store at -20°C. Minimize freezing and thawing.

Applications Tested

Peptide ELISA: antibody detection limit dilution 1:32000.

Western blot: Approx 150kDa band observed in Human Kidney lysates and in lysates of cell line K562 (calculated MW of 139kDa according to NP_000177.2). This molecular weight is routinely observed by other sources. Recommended concentration: 0.03-0.3µg/ml. Primary incubation 1 hour at room temperature.

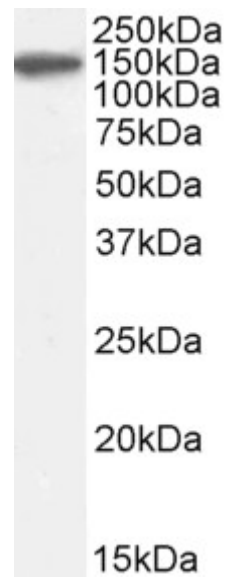
IHC: Paraffin embedded Human Liver. Recommended concentration: 5µg/ml.

Flow Cytometry: Flow cytometric analysis of HepG2 cells. Recommended concentration: 10µg/ml.

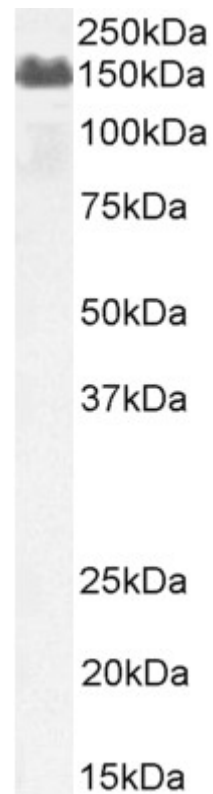
Species Reactivity

Tested: Human

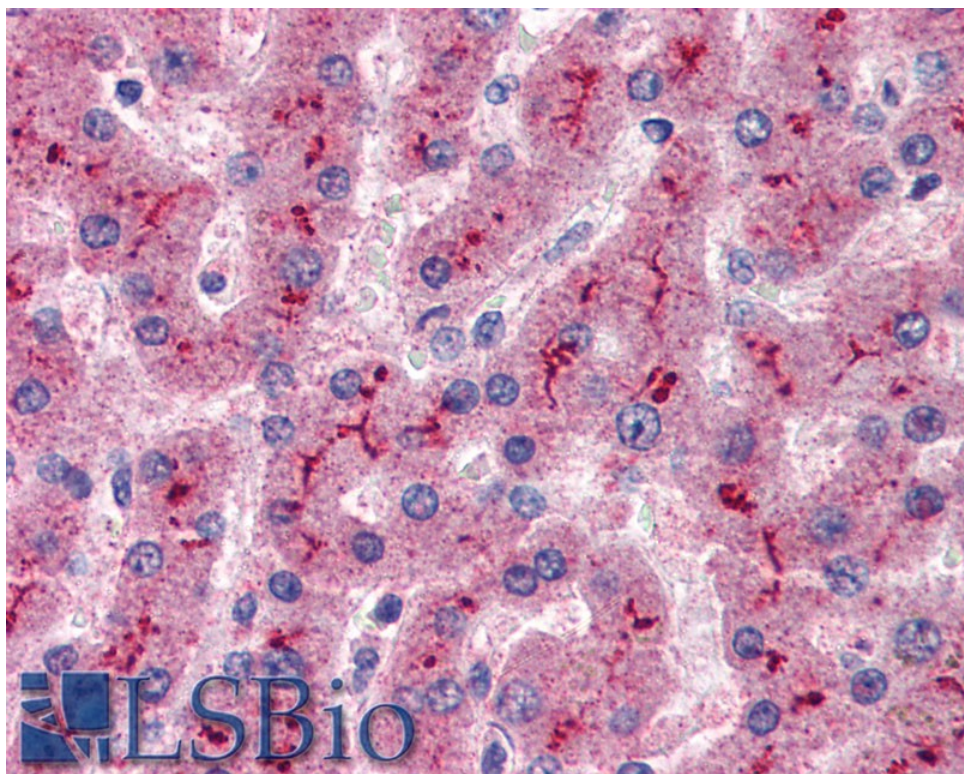
Expected from sequence similarity: Human



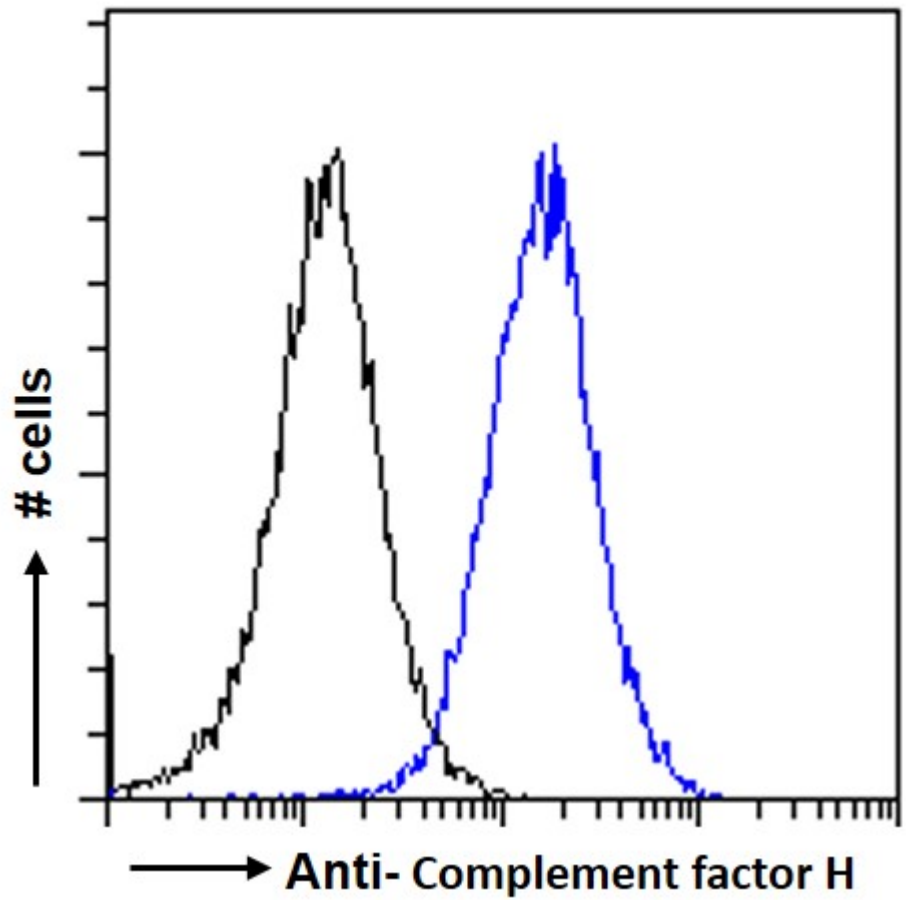
EB06848 staining (0.03µg/ml) of Human Kidney lysate (35µg protein in RIPA buffer). Detected by chemiluminescence.



EB06848 staining (0.3µg/ml) of K562 cell lysate (35µg protein in RIPA buffer) Detected by chemiluminescence.



EB06848 (5µg/ml) staining of paraffin embedded Human Liver. Steamed antigen retrieval with citrate buffer pH 6, AP-staining.



EB06848 Flow cytometric analysis of paraformaldehyde fixed HepG2 cells (blue line), permeabilized with 0.5% Triton. Primary incubation 1hr (10ug/ml) followed by Alexa Fluor 488 secondary antibody (1ug/ml). IgG control: Unimmunized goat IgG (black line) followed by Alexa Fluor 488 secondary antibody.