



Everest Biotech Ltd
Cherwell Innovation Centre
77 Heyford Park
Upper Heyford
Oxfordshire
OX25 5HD, United Kingdom

everestbiotech.com

sales@everestbiotech.com

support@everestbiotech.com

Tel +44 1869 238326

Fax +44 1869 238327

Research Use Only. Not for diagnostic or therapeutic use.

Storage: For long-term storage keep aliquots at -20°C. (Store no longer than 12 months at 4°C). Minimize freezing and thawing.

EB06595 - Goat Anti-COMT (N Terminus) Antibody

Size: 100µg specific antibody in 200µl

Target Protein

Principal Names: catechol-O-methyltransferase, COMT

Official Symbol: COMT

Accession Number(s): NP_000745.1; NP_001128633.1; NP_001128634.1; NP_009294.1

Human GeneID(s): [1312](#)

Important Comments: This antibody is expected to recognise both reported isoforms. Variants (NP_000745.1; NP_001128633.1; NP_001128634.1) encode the same isoform.

Immunogen

Peptide with sequence GDTKEQRILNHVLQC, from the N Terminus of the protein sequence according to NP_000745.1; NP_001128633.1; NP_001128634.1; NP_009294.1.

Please note the [peptide](#) is available for sale.

Purification and Storage

Purified from goat serum by ammonium sulphate precipitation followed by antigen affinity chromatography using the immunizing peptide.

Supplied at 0.5 mg/ml in Tris saline, 0.02% sodium azide, pH7.3 with 0.5% bovine serum albumin.

Aliquot and store at -20°C. Minimize freezing and thawing.

Applications Tested

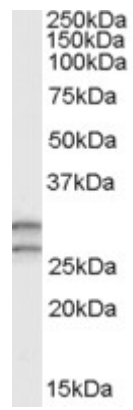
Peptide ELISA: antibody detection limit dilution 1:8000.

Western blot: Approx 26kDa plus 29kDa bands observed in Human Testis lysates (calculated MW of 30.0kDa according to NP_000745.1 and of 24.5kDa according to NP_009294.1). Recommended concentration: 0.3-1µg/ml.

Species Reactivity

Tested: Human

Expected from sequence similarity: Human, Mouse, Rat, Dog



Staining of human testis lysate (35µg protein in RIPA buffer) with EB06595 (0.3µg/ml). Primary incubation was 1 hour. Detected by chemiluminescence.