



UK Office

Everest Biotech Ltd

Cherwell Innovation Centre
77 Heyford Park
Upper Heyford
Oxfordshire
OX25 5HD
UK

Enquiries:

info@everestbiotech.com

Sales:

sales@everestbiotech.com

Tech support:

support@everestbiotech.com

Tel: +44 (0)1869 238326

www.everestbiotech.com

**Research Use Only. Not for
diagnostic or therapeutic use.**

EB12176 - Goat Anti-Cone-rod homeobox (C Terminus) Antibody

Size: 100µg specific antibody in 200µl



Target Protein

Principal Names: CRX, cone-rod homeobox, COD2, CRD, LCA7, OTX3, cone-rod homeobox protein, orthodenticle homeobox 3

Official Symbol: CRX

Accession Number(s): NP_000545.1

Human GeneID(s): [1406](#)

Non-Human GeneID(s): 12951 (mouse), 60446 (rat)

Immunogen

Peptide with sequence C-DPLDYKDQSAWK, from the internal region (near C Terminus) of the protein sequence according to NP_000545.1.

Please note the [peptide](#) is available for sale.

Purification and Storage

Purified from goat serum by ammonium sulphate precipitation followed by antigen affinity chromatography using the immunizing peptide.

Supplied at 0.5 mg/ml in Tris saline, 0.02% sodium azide, pH7.3 with 0.5% bovine serum albumin.

Aliquot and store at -20°C. Minimize freezing and thawing.

Applications Tested

Peptide ELISA: antibody detection limit dilution 1:128000.

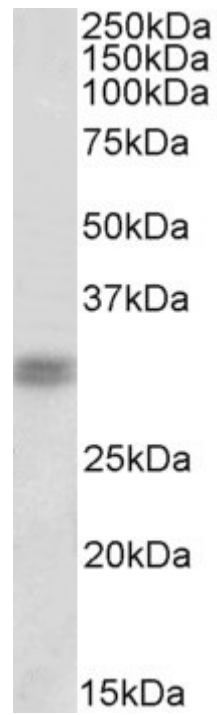
Western blot: Approx 30kDa band observed in Rat Retina lysates (calculated MW of 32.3kDa according to Human NP_000545.1 and to Rat NP_068627.1). Recommended concentration: 1-3µg/ml. Primary incubation was 1 hour.

IHC: Paraffin embedded Human Retina. Recommended concentration: 5µg/ml.

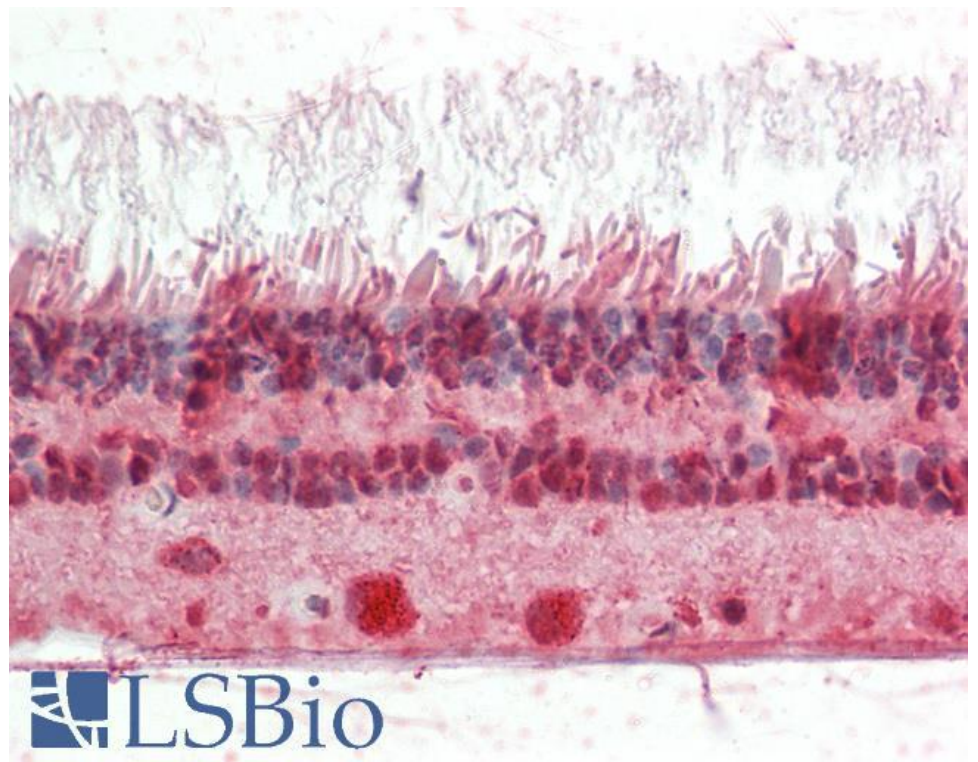
Species Reactivity

Tested: Human, Rat

Expected from sequence similarity: Human, Mouse, Rat, Pig, Cow



EB12176 (1 μ g/ml) staining of Rat Retina lysate (35 μ g protein in RIPA buffer). Detected by chemiluminescence.



EB12176 (5 μ g/ml) staining of paraffin embedded Human Retina. Steamed antigen retrieval with citrate buffer pH 6, AP-staining.