



## UK Office

### Everest Biotech Ltd

Cherwell Innovation Centre  
77 Heyford Park  
Upper Heyford  
Oxfordshire  
OX25 5HD  
UK

Enquiries:

[info@everestbiotech.com](mailto:info@everestbiotech.com)

Sales:

[sales@everestbiotech.com](mailto:sales@everestbiotech.com)

Tech support:

[support@everestbiotech.com](mailto:support@everestbiotech.com)

Tel: +44 (0)1869 238326

Fax: +44 (0)1869 238327

## US Office

### Everest Biotech c/o Abcore

405 Maple Street, Suite A106  
Ramona,  
CA 92065  
USA

Inquiries:

[info@everestbiotech.com](mailto:info@everestbiotech.com)

Sales:

[usasales@everestbiotech.com](mailto:usasales@everestbiotech.com)

Tech support:

[support@everestbiotech.com](mailto:support@everestbiotech.com)

Tel: 888-320-4628 (toll-free)

Fax: 888-841-9041

[www.everestbiotech.com](http://www.everestbiotech.com)

**Research Use Only. Not for  
diagnostic or therapeutic use.**

## EB12176 - Goat Anti-Cone-rod homeobox (C Terminus) Antibody

Size: 100µg specific antibody in 200µl



### Target Protein

**Principal Names:** CRX, cone-rod homeobox, CORD2, CRD, LCA7, OTX3, cone-rod homeobox protein, orthodenticle homeobox 3

**Official Symbol:** CRX

**Accession Number(s):** NP\_000545.1

**Human GeneID(s):** [1406](#)

**Non-Human GeneID(s):** 12951 (mouse), 60446 (rat)

### Immunogen

Peptide with sequence C-DPLDYKDQSAWK, from the internal region (near C Terminus) of the protein sequence according to NP\_000545.1.

Please note the [peptide](#) is available for sale.

### Purification and Storage

Purified from goat serum by ammonium sulphate precipitation followed by antigen affinity chromatography using the immunizing peptide.

Supplied at 0.5 mg/ml in Tris saline, 0.02% sodium azide, pH7.3 with 0.5% bovine serum albumin.

Aliquot and store at -20°C. Minimize freezing and thawing.

### Applications Tested

**Peptide ELISA:** antibody detection limit dilution 1:128000.

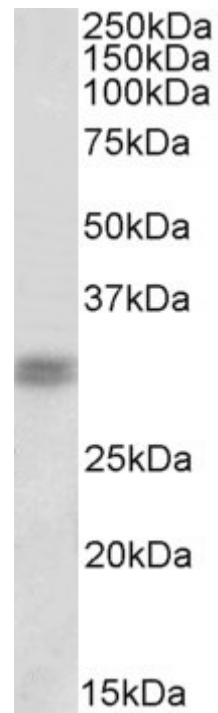
**Western blot:** Approx 30kDa band observed in Rat Retina lysates (calculated MW of 32.3kDa according to Human NP\_000545.1 and to Rat NP\_068627.1). Recommended concentration: 1-3µg/ml. Primary incubation was 1 hour.

**IHC:** Paraffin embedded Human Retina. Recommended concentration: 5µg/ml.

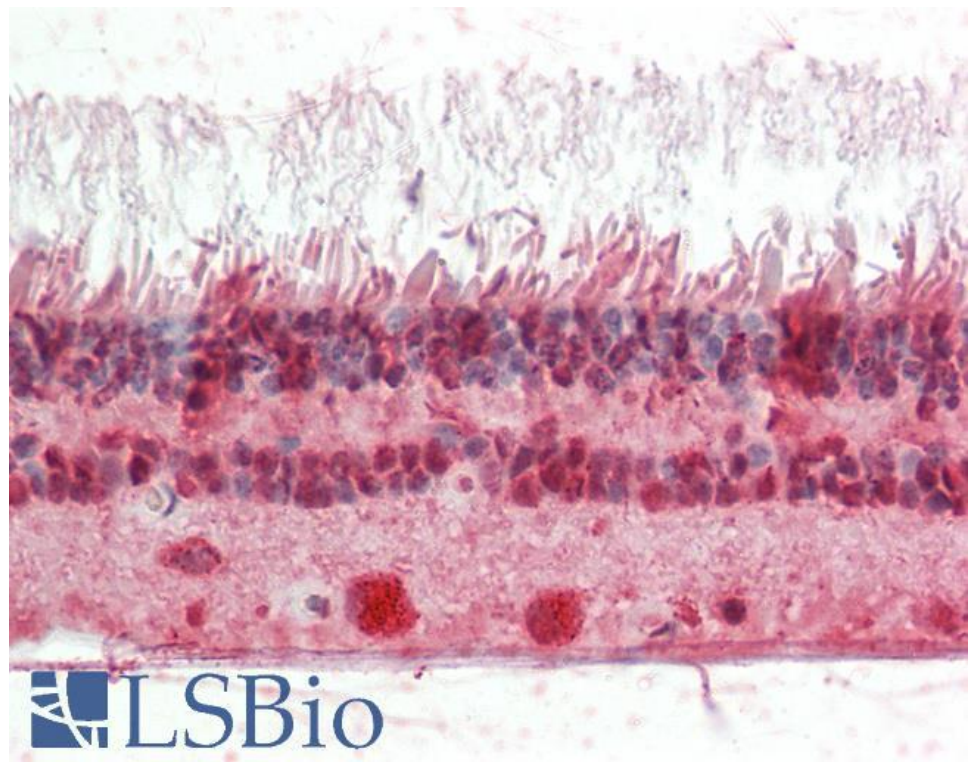
### Species Reactivity

**Tested:** Human, Rat

**Expected from sequence similarity:** Human, Mouse, Rat, Pig, Cow



EB12176 (1 $\mu$ g/ml) staining of Rat Retina lysate (35 $\mu$ g protein in RIPA buffer). Detected by chemiluminescence.



EB12176 (5 $\mu$ g/ml) staining of paraffin embedded Human Retina. Steamed antigen retrieval with citrate buffer pH 6, AP-staining.