



## UK Office

### Everest Biotech Ltd

Cherwell Innovation Centre  
77 Heyford Park  
Upper Heyford  
Oxfordshire  
OX25 5HD  
UK

Enquiries:

[info@everestbiotech.com](mailto:info@everestbiotech.com)

Sales:

[sales@everestbiotech.com](mailto:sales@everestbiotech.com)

Tech support:

[support@everestbiotech.com](mailto:support@everestbiotech.com)

Tel: +44 (0)1869 238326

[www.everestbiotech.com](http://www.everestbiotech.com)

**Research Use Only. Not for  
diagnostic or therapeutic use.**

## EB12274 - Goat Anti-contactin 1 (aa585-870) Antibody

Size: 100µg specific antibody in 200µl



### Target Protein

**Principal Names:** CNTN1, contactin 1, F3, GP135, contactin-1, glycoprotein gP135, neural cell surface protein F3

**Official Symbol:** CNTN1

**Accession Number(s):** NP\_001834.2; NP\_778203.1

**Human GeneID(s):** [1272](#)

**Non-Human GeneID(s):** 12805 (mouse), 117258 (rat)

**Important Comments:** This antibody is expected to recognize isoform 1 (NP\_001834.2) and isoform 2 (NP\_778203.1).

### Immunogen

Peptide with sequence C-QVTSQEYSARLEN, from the internal region of the protein sequence according to NP\_001834.2; NP\_778203.1.

Please note the [peptide](#) is available for sale.

### Purification and Storage

Purified from goat serum by ammonium sulphate precipitation followed by antigen affinity chromatography using the immunizing peptide.

Supplied at 0.5 mg/ml in Tris saline, 0.02% sodium azide, pH7.3 with 0.5% bovine serum albumin.

Aliquot and store at -20°C. Minimize freezing and thawing.

### Applications Tested

**Peptide ELISA:** antibody detection limit dilution 1:16000.

**Western blot:** Approx 140kDa band observed in Mouse Brain, and approx 150kDa observed in Human and Rat Brain lysates (calculated MW of 113kDa according to according to Human, NP\_001834.2, Mouse NP\_031753.1 and Rat NP\_476459.1). The observed molecular weight corresponds to the glycosylated form. Recommended concentration: 0.3-1µg/ml.

**IHC:** Paraffin embedded Human Brain (Cerebellum) and Mouse Brain (Cerebral Cortex). Recommended concentration: 5µg/ml.

### Species Reactivity

**Tested:** Human, Mouse, Rat

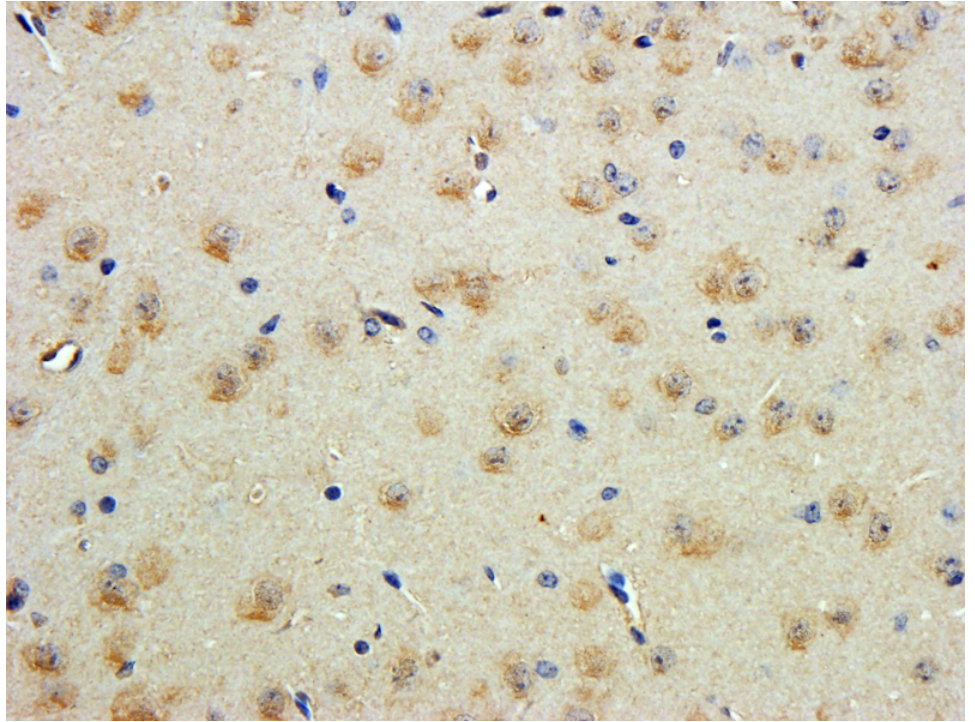
**Expected from sequence similarity:** Human, Mouse, Rat, Dog, Pig



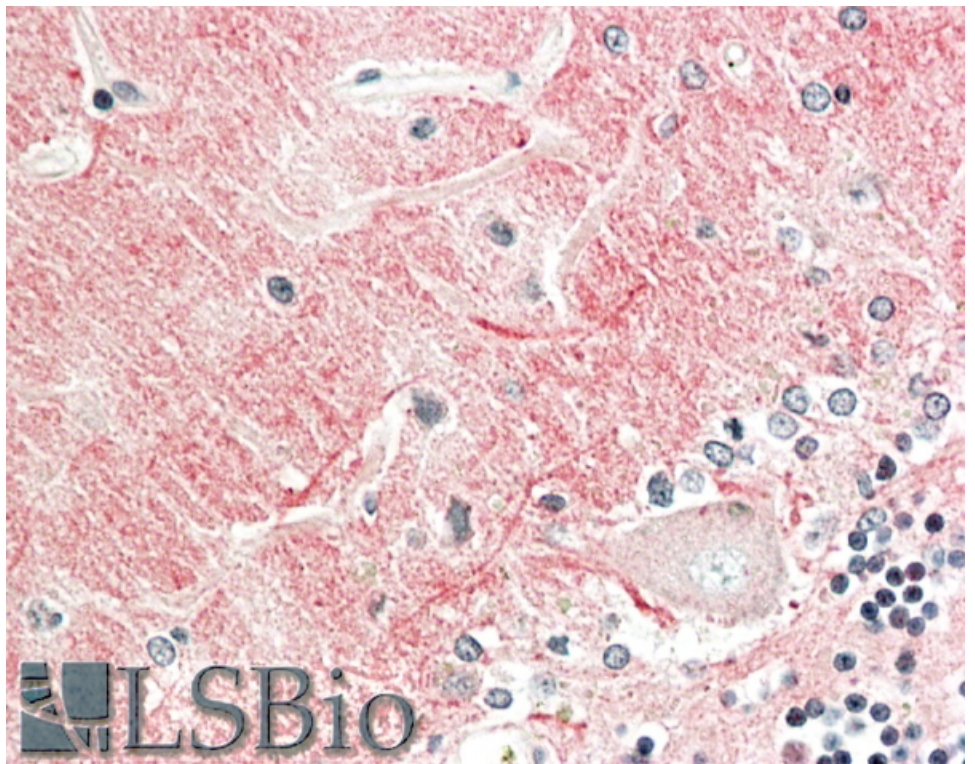
EB12274 (1µg/ml) staining of Human Cerebellum lysate (35µg protein in RIPA buffer). Primary incubation was 1 hour. Detected by chemiluminescence.



EB12274 (1µg/ml) staining of Mouse (A) and Rat (B) Brain lysate (35µg protein in RIPA buffer). Primary incubation was 1 hour. Detected by chemiluminescence.



EB12274 (5ug/ml) staining of paraffin embedded Mouse Cerebral Cortex. Steamed antigen retrieval with citrate buffer pH 6, DAB-staining.



EB12274 (5ug/ml) staining of paraffin embedded Human Cerebellum. Steamed antigen retrieval with citrate buffer pH 6, AP-staining.