



UK Office

Everest Biotech Ltd

Cherwell Innovation Centre
77 Heyford Park
Upper Heyford
Oxfordshire
OX25 5HD
UK

Enquiries:

info@everestbiotech.com

Sales:

sales@everestbiotech.com

Tech support:

support@everestbiotech.com

Tel: +44 (0)1869 238326

Fax: +44 (0)1869 238327

US Office

Everest Biotech c/o Abcore

405 Maple Street, Suite A106
Ramona,
CA 92065
USA

Inquiries:

info@everestbiotech.com

Sales:

usasales@everestbiotech.com

Tech support:

support@everestbiotech.com

Tel: 888-320-4628 (toll-free)

Fax: 888-841-9041

www.everestbiotech.com

**Research Use Only. Not for
diagnostic or therapeutic use.**

EB12273 - Goat Anti-contactin 1 Antibody

Size: 100µg specific antibody in 200µl



Target Protein

Principal Names: CNTN1, contactin 1, F3, GP135, contactin-1, glycoprotein gP135, neural cell surface protein F3

Official Symbol: CNTN1

Accession Number(s): NP_001834.2; NP_778203.1; NP_001242992.1

Human GeneID(s): [1272](#)

Non-Human GeneID(s): 12805 (mouse), 117258 (rat)

Important Comments: This antibody is expected to recognize all reported isoforms (NP_001834.2; NP_778203.1; NP_001242992.1). Reported variants represent identical protein: NP_001242993.1, NP_001242992.1.

Immunogen

Peptide with sequence C-ENIRGKDKHQAR, from the internal region of the protein sequence according to NP_001834.2; NP_778203.1; NP_001242992.1.

Please note the [peptide](#) is available for sale.

Purification and Storage

Purified from goat serum by ammonium sulphate precipitation followed by antigen affinity chromatography using the immunizing peptide.

Supplied at 0.5 mg/ml in Tris saline, 0.02% sodium azide, pH7.3 with 0.5% bovine serum albumin.

Aliquot and store at -20°C. Minimize freezing and thawing.

Applications Tested

Peptide ELISA: antibody detection limit dilution 1:32000.

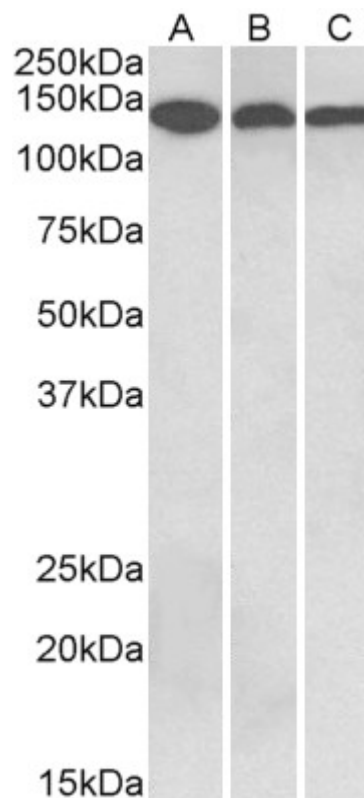
Western blot: Approx 140kDa band observed in Human, Mouse, Rat and Pig Brain lysates (calculated MW of 113kDa according to NP_001834.2). The observed molecular weight corresponds to the glycosylated form. Recommended concentration: 0.3-1µg/ml. Primary incubation was 1 hour.

IHC: Paraffin embedded Human Brain (Cerebellum). Recommended concentration: 5µg/ml.

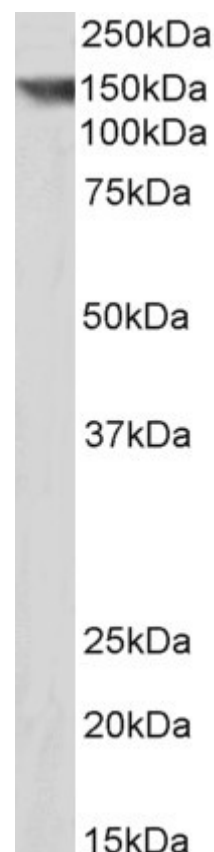
Species Reactivity

Tested: Human, Mouse, Rat, Pig

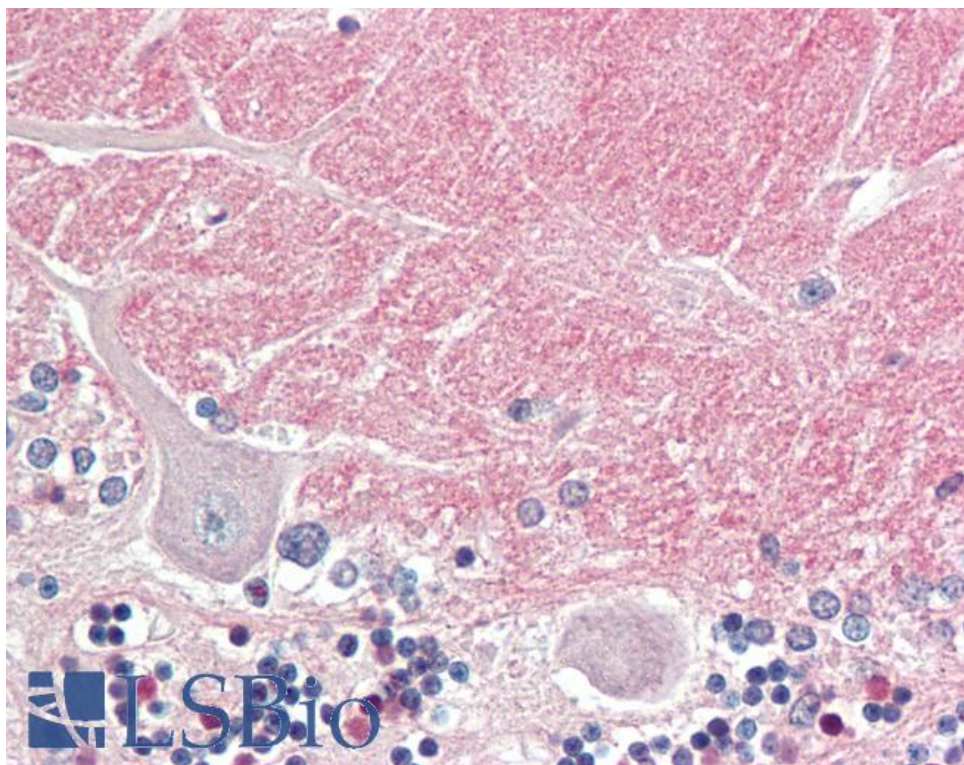
Expected from sequence similarity: Human, Mouse, Rat, Pig



EB12273 (0.3 μ g/ml) staining of Human Cerebellum (A), Mouse Brain (B) and Rat Brain (C) lysates (35 μ g protein in RIPA buffer). Detected by chemiluminescence.



EB12273 (0.3 μ g/ml) staining of Pig Brain lysate (35 μ g protein in RIPA buffer). Detected by chemiluminescence.



EB12273 (5µg/ml) staining of paraffin embedded Human Cerebellum. Steamed antigen retrieval with citrate buffer pH 6, AP-staining.