



UK Office

Everest Biotech Ltd

Cherwell Innovation Centre
77 Heyford Park
Upper Heyford
Oxfordshire
OX25 5HD
UK

Enquiries:

info@everestbiotech.com

Sales:

sales@everestbiotech.com

Tech support:

support@everestbiotech.com

Tel: +44 (0)1869 238326

Fax: +44 (0)1869 238327

US Office

Everest Biotech c/o Abcore

405 Maple Street, Suite A106
Ramona,
CA 92065
USA

Inquiries:

info@everestbiotech.com

Sales:

usasales@everestbiotech.com

Tech support:

support@everestbiotech.com

Tel: 888-320-4628 (toll-free)

Fax: 888-841-9041

www.everestbiotech.com

**Research Use Only. Not for
diagnostic or therapeutic use.**

EB10513 - Goat Anti-COPA Antibody

Size: 100µg specific antibody in 200µl



Target Protein

Principal Names: alpha coat protein, coatomer protein complex, subunit alpha, FLJ26320, HEP-COP, xenin, COPA

Official Symbol: COPA

Accession Number(s): NP_001091868.1; NP_004362.2

Human GeneID(s): [1314](#)

Non-Human GeneID(s): 12847 (mouse), 304978 (rat)

Important Comments: This antibody is expected to recognize both reported isoforms (NP_001091868.1; NP_004362.2).

Immunogen

Peptide with sequence CTRASNLENST, from the internal region of the protein sequence according to NP_001091868.1; NP_004362.2.

Please note the [peptide](#) is available for sale.

Purification and Storage

Purified from goat serum by ammonium sulphate precipitation followed by antigen affinity chromatography using the immunizing peptide.

Supplied at 0.5 mg/ml in Tris saline, 0.02% sodium azide, pH7.3 with 0.5% bovine serum albumin.

Aliquot and store at -20°C. Minimize freezing and thawing.

Applications Tested

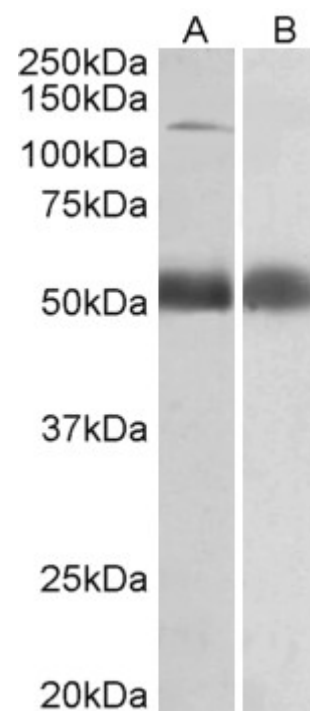
Peptide ELISA: antibody detection limit dilution 1:1000.

Western blot: Approx 140kDa band observed in Human Prostate lysates (calculated MW of 138kDa according to NP_001091868.1 and NP_004362.2). Recommended concentration: 0.5-2µg/ml. An additional band of 52kDa was consistently observed, however this band was not blocked by the immunizing peptide and it is therefore a non-specific signal. We call for caution when used for other assays than Western blot.

Species Reactivity

Tested: Human

Expected from sequence similarity: Human, Mouse, Rat, Cow, Pig



EB10513 (0.5µg/ml) staining of Human Prostate lysate (35µg protein in RIPA buffer) with (B) and without (A) blocking with the immunizing peptide. Primary incubation was 1 hour. Detected by chemiluminescence.