

UK Office

Everest Biotech Ltd

Cherwell Innovation Centre
77 Heyford Park
Upper Heyford
Oxfordshire
OX25 5HD
UK

Enquiries:

info@everestbiotech.com

Sales:

sales@everestbiotech.com

Tech support:

support@everestbiotech.com

Tel: +44 (0)1869 238326

www.everestbiotech.com

**Research Use Only. Not for
diagnostic or therapeutic use.**

EB09410 - Goat Anti-Copine 1 Antibody

Size: 100µg specific antibody in 200µl



Target Protein

Principal Names: CPNE1, copine I, COPN1, CPN1, MGC1142, OTTHUMP00000030775, OTTHUMP00000030776, copine-1

Official Symbol: CPNE1

Accession Number(s): NP_690902.1; NP_003906.2

Human GeneID(s): [8904](#)

Important Comments: This antibody is expected to recognize isoform a and b (NP_003906.2; NP_690902.1). Reported variants represent identical protein: NP_690905.1, NP_690902.1, NP_690903.1, NP_690906.1, NP_690904.1, NP_690907.1, NP_690908.1.

Immunogen

Peptide with sequence C-APLKPLPPSAKDPA, from the C Terminus of the protein sequence according to NP_690902.1; NP_003906.2.

Please note the [peptide](#) is available for sale.

Purification and Storage

Purified from goat serum by ammonium sulphate precipitation followed by antigen affinity chromatography using the immunizing peptide.

Supplied at 0.5 mg/ml in Tris saline, 0.02% sodium azide, pH7.3 with 0.5% bovine serum albumin.

Aliquot and store at -20°C. Minimize freezing and thawing.

Applications Tested

Peptide ELISA: antibody detection limit dilution 1:16000.

Western blot: Approx 55kDa band observed in Human Skin lysates (calculated MW of 59.1kDa according to NP_690902.1). Recommended concentration: 0.1-0.3µg/ml.

Additional validation: This antibody has been successfully used in the following paper: Sikorski et al. (2018) PMID: 30377371.

Species Reactivity

Tested: Human

Expected from sequence similarity: Human

Specific Reference

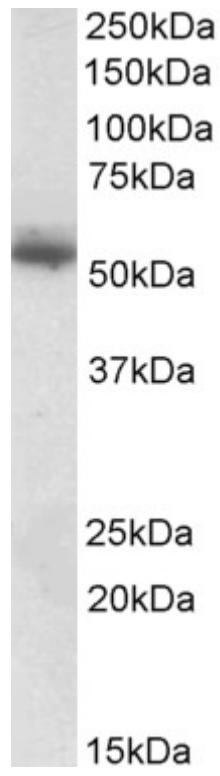
This antibody has been successfully used in the following paper:

Krzysztof Sikorski, Adi Mehta, Marit Inngjerdigen, Flourina Thakor, Simon Kling, Tomas Kalina, Tuula A. Nyman, Maria Ekman Stensland, Wei Zhou, Gustavo A. De Souza, Lars Holden, Jan Stuchly, Markus Templin and Fridtjof Lund-Johansen

A high-throughput pipeline for validation of antibodies

Nat Methods. 2018 Nov;15(11):909-912

PMID: 30377371



EB09410 (0.1 μ g/ml) staining of Human Skin lysate (35 μ g protein in RIPA buffer). Primary incubation was 1 hour.
Detected by chemiluminescence.