



## UK Office

### Everest Biotech Ltd

Cherwell Innovation Centre  
77 Heyford Park  
Upper Heyford  
Oxfordshire  
OX25 5HD  
UK

Enquiries:

[info@everestbiotech.com](mailto:info@everestbiotech.com)

Sales:

[sales@everestbiotech.com](mailto:sales@everestbiotech.com)

Tech support:

[support@everestbiotech.com](mailto:support@everestbiotech.com)

Tel: +44 (0)1869 238326

Fax: +44 (0)1869 238327

## US Office

### Everest Biotech c/o Abcore

405 Maple Street, Suite A106  
Ramona,  
CA 92065  
USA

Inquiries:

[info@everestbiotech.com](mailto:info@everestbiotech.com)

Sales:

[usasales@everestbiotech.com](mailto:usasales@everestbiotech.com)

Tech support:

[support@everestbiotech.com](mailto:support@everestbiotech.com)

Tel: 888-320-4628 (toll-free)

Fax: 888-841-9041

[www.everestbiotech.com](http://www.everestbiotech.com)

**Research Use Only. Not for  
diagnostic or therapeutic use.**

## EB06057 - Goat Anti-Coronin 1 / TACO Antibody

Size: 100µg specific antibody in 200µl



### Target Protein

**Principal Names:** CORO1A, Coronin 1, TACO, p57, CLABP, HCORO1, CLIPINA, Clabp  
TACO, coronin, actin binding protein, 1A, coronin-1, coronin, actin-binding, 1A, coronin,  
actin-binding protein, 1A, FLJ41407, MGC117380

**Official Symbol:** CORO1A

**Accession Number(s):** NP\_009005.1

**Human GeneID(s):** [11151](#)

**Non-Human GeneID(s):** 12721 (mouse), 155151 (rat)

### Immunogen

Peptide with sequence C-KRLDRLEETVQAK, from the C Terminus of the protein  
sequence according to NP\_009005.1.

Please note the [peptide](#) is available for sale.

### Purification and Storage

Purified from goat serum by ammonium sulphate precipitation followed by antigen affinity  
chromatography using the immunizing peptide.

Supplied at 0.5 mg/ml in Tris saline, 0.02% sodium azide, pH7.3 with 0.5% bovine serum  
albumin.

Aliquot and store at -20°C. Minimize freezing and thawing.

### Applications Tested

**Peptide ELISA:** antibody detection limit dilution 1:16000.

**Western blot:** Approx 60kDa band observed in lysates of cell lines Daudi, Jurkat and  
MOLT4 and approx. 55kDa in Human Lymph node and Spleen lysates (calculated MW of  
51.0kDa according to Human NP\_009005.1). These molecular weights are routinely  
observed by other sources. Recommended concentration: 0.3-1µg/ml. Primary incubation  
1 hour at room temperature.

**IHC:** Paraffin embedded Human Spleen and Small Intestine. Recommended  
concentration: 3.75µg/ml.

**Flow Cytometry:** Flow cytometric analysis of Jurkat cells. Recommended concentration:  
10ug/ml.

### Species Reactivity

**Tested:** Human

**Expected from sequence similarity:** Human, Mouse, Rat, Dog, Cow

### Specific Reference

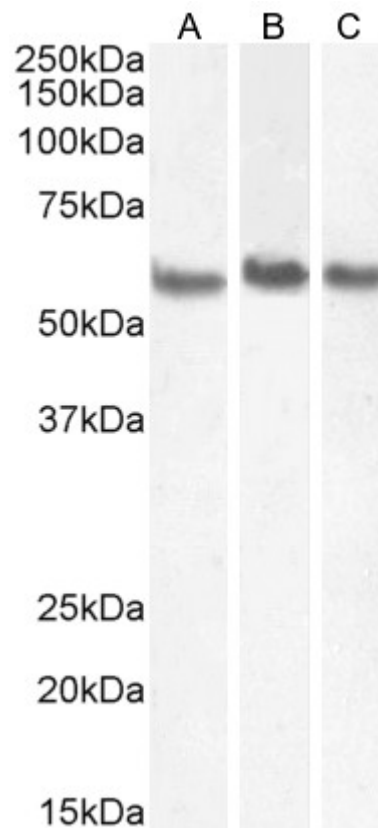
**This antibody (previous batch) has been successfully used in WB on Mouse:**

Honoré B, Buus S, Claesson MH.

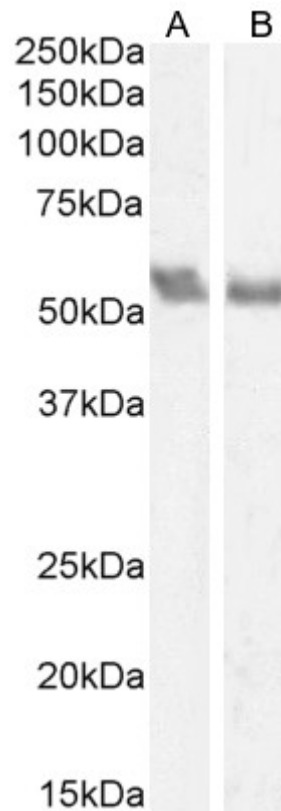
Identification of differentially expressed proteins in spontaneous thymic lymphomas from  
knockout mice with deletion of p53.

Proteome Sci. 2008 Jun 10;6:18.

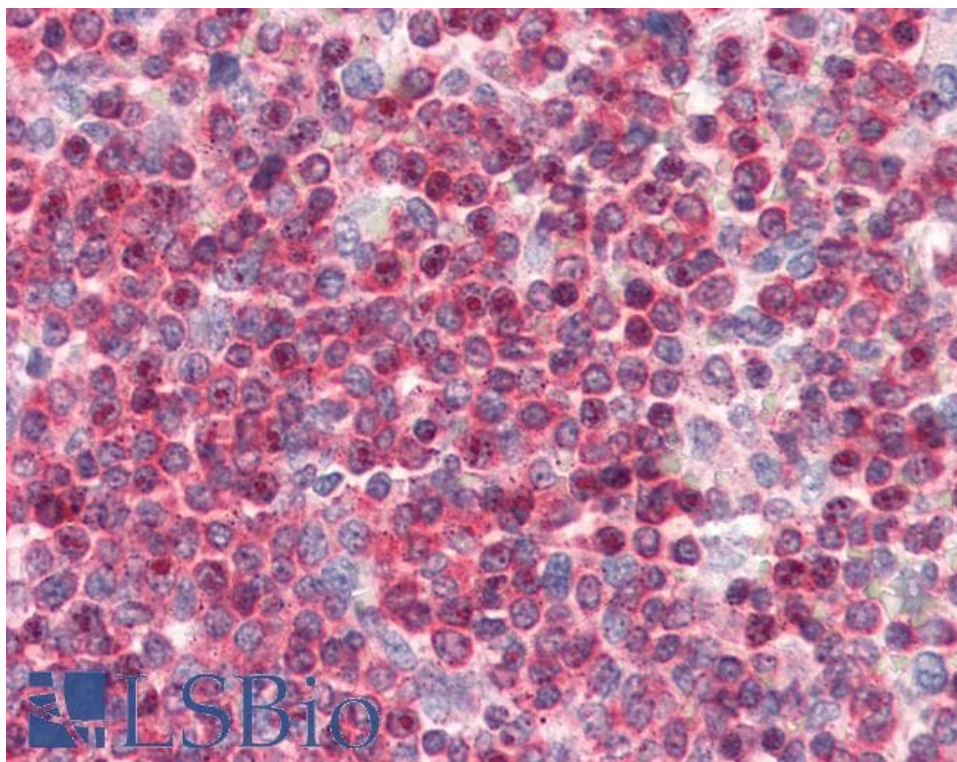
PMID: 18544163



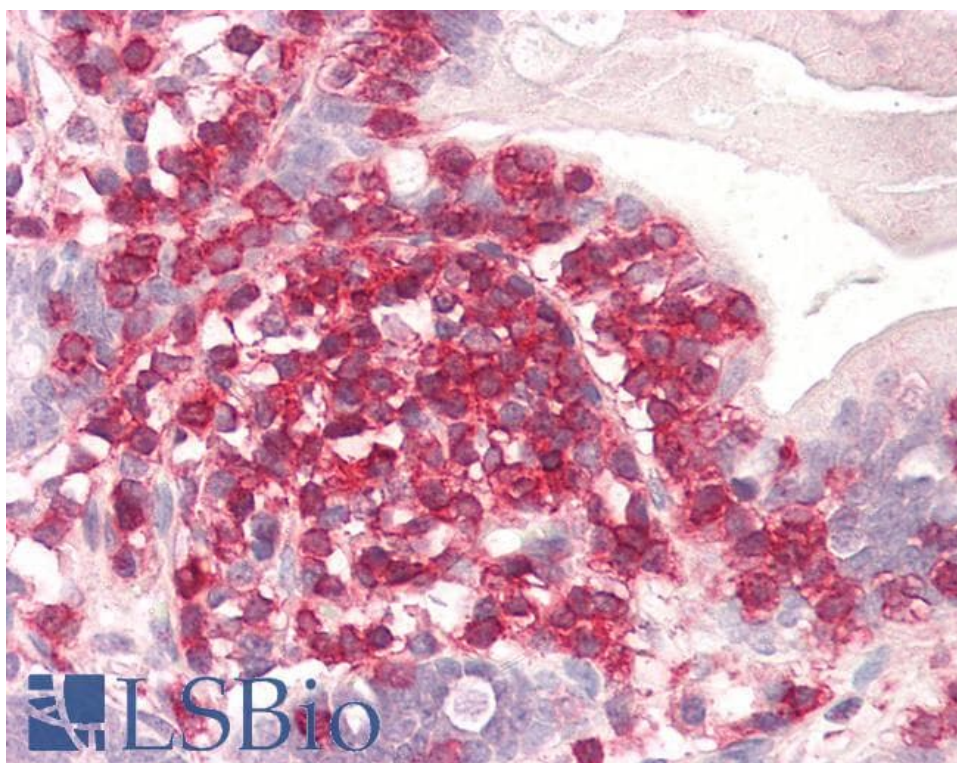
EB06057 (0.5µg/ml) staining of Daudi (A), MOLT4 (B) and (1ug/ml) of Jurkat (C) cell lysate (35µg protein in RIPA buffer). Detected by chemiluminescence.



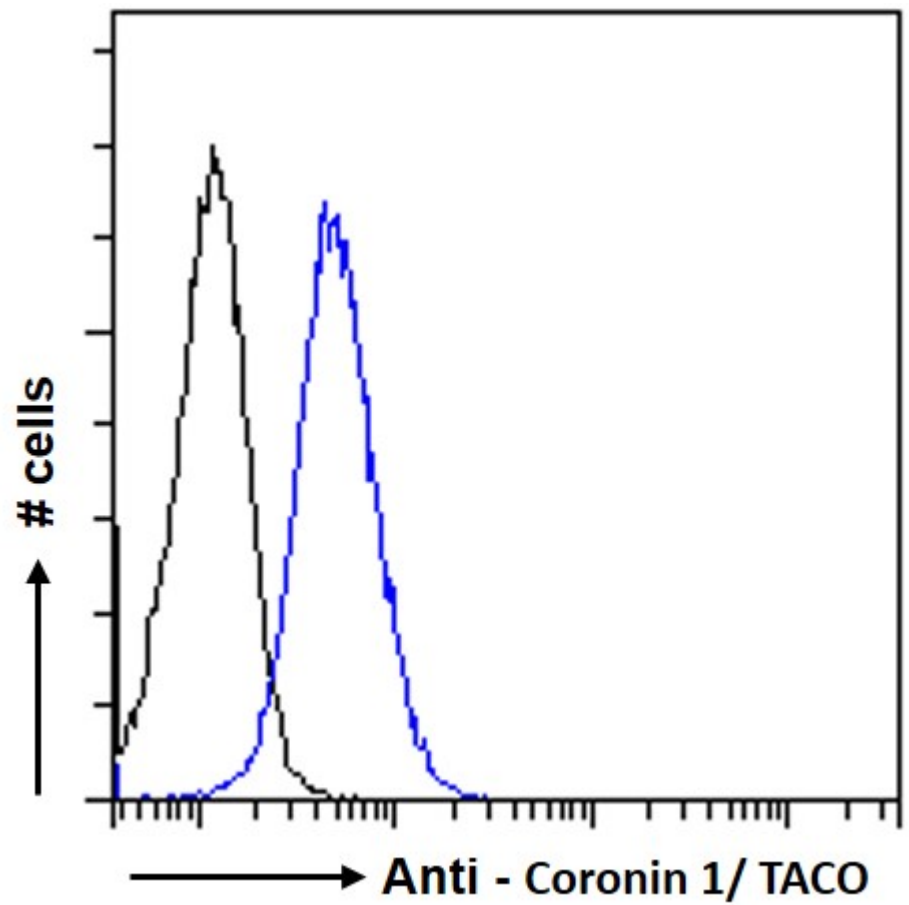
EB06057 (0.5µg/ml) staining of Human Lymph node (A) and Spleen (B) lysate (35µg protein in RIPA buffer). Detected by chemiluminescence.



EB06057 (3.75µg/ml) staining of paraffin embedded Human Spleen. Steamed antigen retrieval with citrate buffer pH 6, AP-staining.



EB06057 (3.75µg/ml) staining of paraffin embedded Human Small Intestine. Steamed antigen retrieval with citrate buffer pH 6, AP-staining.



EB06057 Flow cytometric analysis of paraformaldehyde fixed Jurkat cells (blue line), permeabilized with 0.5% Triton. Primary incubation 1hr (10ug/ml) followed by Alexa Fluor 488 secondary antibody (1ug/ml). IgG control: Unimmunized goat IgG (black line) followed by Alexa Fluor 488 secondary antibody.