



Everest Biotech Ltd
Cherwell Innovation Centre
77 Heyford Park
Upper Heyford
Oxfordshire
OX25 5HD, United Kingdom

everestbiotech.com

sales@everestbiotech.com

support@everestbiotech.com

Tel +44 1869 238326

Fax +44 1869 238327

**Research Use Only. Not for
diagnostic or therapeutic use.**

Storage: For long-term storage
keep aliquots at -20°C. (Store no
longer than 12 months at 4°C).
Minimize freezing and thawing.

EB06357 - Goat Anti-Coronin 3 / coronin 1C Antibody

Size: 100µg specific antibody in 200µl



Target Protein

Principal Names: coronin, actin-binding protein, 1C, coronin 1C, coronin, actin binding protein, 1C, HCRNN4, CORO1C, coronin 1C, coronin-3

Official Symbol: CORO1C

Accession Number(s): NP_055140.1

Human GeneID(s): [23603](#)

Immunogen

Peptide with sequence C-RISKLEQQMAKIAA, from the C Terminus of the protein sequence according to NP_055140.1.

Please note the [peptide](#) is available for sale.

Purification and Storage

Purified from goat serum by ammonium sulphate precipitation followed by antigen affinity chromatography using the immunizing peptide.

Supplied at 0.5 mg/ml in Tris saline, 0.02% sodium azide, pH7.3 with 0.5% bovine serum albumin.

Aliquot and store at -20°C. Minimize freezing and thawing.

Applications Tested

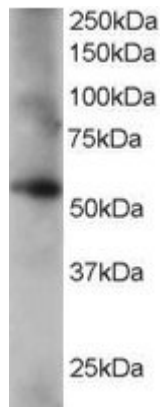
Peptide ELISA: antibody detection limit dilution 1:64000.

Western blot: Approx 55kDa band observed in human lung and placenta lysates (calculated MW of 53.2kDa according to NP_055140.1). Recommended for use at 0.2-1µg/ml.

Species Reactivity

Tested: Human

Expected from sequence similarity: Human, Pig, Cow



EB06357 staining (0.2 μ g/ml) of human lung lysate (RIPA buffer, 35 μ g total protein per lane). Primary incubated for 1 hour. Detected by western blot using chemiluminescence.