



UK Office

Everest Biotech Ltd

Cherwell Innovation Centre
77 Heyford Park
Upper Heyford
Oxfordshire
OX25 5HD
UK

Enquiries:

info@everestbiotech.com

Sales:

sales@everestbiotech.com

Tech support:

support@everestbiotech.com

Tel: +44 (0)1869 238326

www.everestbiotech.com

**Research Use Only. Not for
diagnostic or therapeutic use.**

EB11290 - Goat Anti-CP110 Antibody

Size: 100µg specific antibody in 200µl



Target Protein

Principal Names: centrosomal protein CP110, centrosomal protein of 110 kDa, Cep110, DKFZp781G1416, KIAA0419, OTTHUMP00000162162, CP110

Official Symbol: CP110

Accession Number(s): NP_001185951.1; NP_055526.3

Human GeneID(s): [9738](#)

Important Comments: This antibody is expected to recognize both reported isoforms (NP_001185951.1; NP_055526.3).

Immunogen

Peptide with sequence CEKSLARIQEAS, from the N Terminus of the protein sequence according to NP_001185951.1; NP_055526.3.

Please note the [peptide](#) is available for sale.

Purification and Storage

Purified from goat serum by ammonium sulphate precipitation followed by antigen affinity chromatography using the immunizing peptide.

Supplied at 0.5 mg/ml in Tris saline, 0.02% sodium azide, pH7.3 with 0.5% bovine serum albumin.

Aliquot and store at -20°C. Minimize freezing and thawing.

Applications Tested

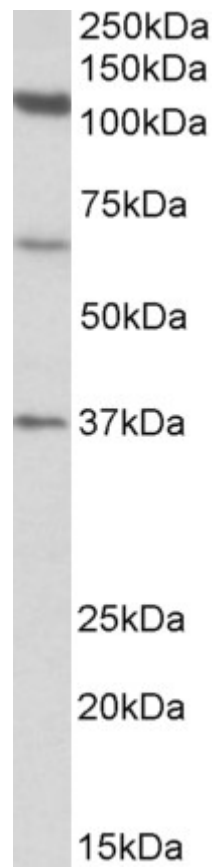
Peptide ELISA: antibody detection limit dilution 1:32000.

Western blot: Approx 110kDa band observed in Human Testis lysates (calculated MW of 113kDa according to NP_001185951.1). Recommended concentration: 0.3-1µg/ml. Additional bands of unknown identity were also consistently observed at 65kDa and 37kDa. These bands were successfully blocked by incubation with the immunizing peptide. We would appreciate any feedback from people in the field - have any such results been reported with other antibodies/lysates? Have any further splice variants/specific breakdown fragments been reported?

Species Reactivity

Tested: Human

Expected from sequence similarity: Human



EB11290 (1 μ g/ml) staining of Human Testis lysate (35 μ g protein in RIPA buffer). Primary incubation was 1 hour.
Detected by chemiluminescence.