



## UK Office

### Everest Biotech Ltd

Cherwell Innovation Centre  
77 Heyford Park  
Upper Heyford  
Oxfordshire  
OX25 5HD  
UK

Enquiries:

[info@everestbiotech.com](mailto:info@everestbiotech.com)

Sales:

[sales@everestbiotech.com](mailto:sales@everestbiotech.com)

Tech support:

[support@everestbiotech.com](mailto:support@everestbiotech.com)

Tel: +44 (0)1869 238326

Fax: +44 (0)1869 238327

## US Office

### Everest Biotech c/o Abcore

405 Maple Street, Suite A106  
Ramona,  
CA 92065  
USA

Inquiries:

[info@everestbiotech.com](mailto:info@everestbiotech.com)

Sales:

[usasales@everestbiotech.com](mailto:usasales@everestbiotech.com)

Tech support:

[support@everestbiotech.com](mailto:support@everestbiotech.com)

Tel: 888-320-4628 (toll-free)

Fax: 888-841-9041

[www.everestbiotech.com](http://www.everestbiotech.com)

**Research Use Only. Not for  
diagnostic or therapeutic use.**

## EB11290 - Goat Anti-CP110 Antibody

Size: 100µg specific antibody in 200µl



### Target Protein

**Principal Names:** centrosomal protein CP110, centrosomal protein of 110 kDa, Cep110, DKFZp781G1416, KIAA0419, OTTHUMP00000162162, CP110

**Official Symbol:** CP110

**Accession Number(s):** NP\_001185951.1; NP\_055526.3

**Human GeneID(s):** [9738](#)

**Important Comments:** This antibody is expected to recognize both reported isoforms (NP\_001185951.1; NP\_055526.3).

### Immunogen

Peptide with sequence CEKSLARIQEAS, from the N Terminus of the protein sequence according to NP\_001185951.1; NP\_055526.3.

Please note the [peptide](#) is available for sale.

### Purification and Storage

Purified from goat serum by ammonium sulphate precipitation followed by antigen affinity chromatography using the immunizing peptide.

Supplied at 0.5 mg/ml in Tris saline, 0.02% sodium azide, pH7.3 with 0.5% bovine serum albumin.

Aliquot and store at -20°C. Minimize freezing and thawing.

### Applications Tested

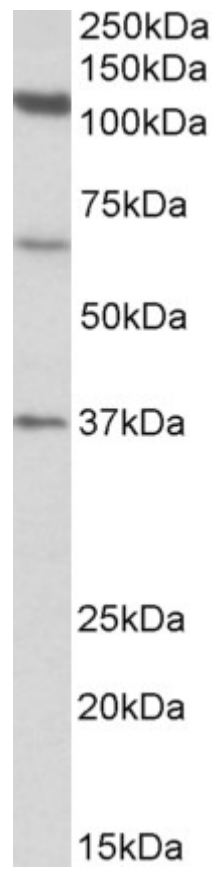
**Peptide ELISA:** antibody detection limit dilution 1:32000.

**Western blot:** Approx 110kDa band observed in Human Testis lysates (calculated MW of 113kDa according to NP\_001185951.1). Recommended concentration: 0.3-1µg/ml. Additional bands of unknown identity were also consistently observed at 65kDa and 37kDa. These bands were successfully blocked by incubation with the immunizing peptide. We would appreciate any feedback from people in the field - have any such results been reported with other antibodies/lysates? Have any further splice variants/specific breakdown fragments been reported?

### Species Reactivity

**Tested:** Human

**Expected from sequence similarity:** Human



EB11290 (1 $\mu$ g/ml) staining of Human Testis lysate (35 $\mu$ g protein in RIPA buffer). Primary incubation was 1 hour.  
Detected by chemiluminescence.