



Everest Biotech Ltd
Cherwell Innovation Centre
77 Heyford Park
Upper Heyford
Oxfordshire
OX25 5HD, United Kingdom

everestbiotech.com

sales@everestbiotech.com

support@everestbiotech.com

Tel +44 1869 238326

Fax +44 1869 238327

Research Use Only. Not for diagnostic or therapeutic use.

Storage: For long-term storage keep aliquots at -20°C. (Store no longer than 12 months at 4°C). Minimize freezing and thawing.

EB06391 - Goat Anti-CPEB1 Antibody

Size: 100µg specific antibody in 200µl



Target Protein

Principal Names: CPE-binding protein 1, MGC60106, MGC34136, CPE-BP1, CEBP, cytoplasmic polyadenylation element binding protein 1, FLJ13203, CPEB, CPEB1

Official Symbol: CPEB1

Accession Number(s): NP_085097.3; NP_001073001.1; NP_001073002.1; NP_001073003.1

Human GeneID(s): [64506](#)

Important Comments: This antibody is expected to recognise alle reported isoforms. Variants (NP_001073002.1; NP_001073003.1) encode the same isoform.

Immunogen

Peptide with sequence C-PLMRNQKNRDSS, from the C Terminus of the protein sequence according to NP_085097.3; NP_001073001.1; NP_001073002.1; NP_001073003.1.

Please note the [peptide](#) is available for sale.

Purification and Storage

Purified from goat serum by ammonium sulphate precipitation followed by antigen affinity chromatography using the immunizing peptide.

Supplied at 0.5 mg/ml in Tris saline, 0.02% sodium azide, pH7.3 with 0.5% bovine serum albumin.

Aliquot and store at -20°C. Minimize freezing and thawing.

Applications Tested

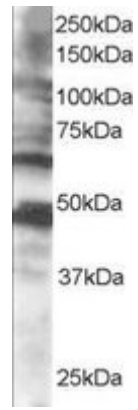
Peptide ELISA: antibody detection limit dilution 1:128000.

Western blot: Approx 65-70kDa band observed in human brain lysates (predicted MW of 65kDa according to NP_085097). Recommended for use at 0.5-2µg/ml. Please note this band was always accompanied by a slightly stonger band at approx 48kDa and further both bands could be blocked by incubation with the immunising peptide.

Species Reactivity

Tested: Human

Expected from sequence similarity: Human, Cow



EB06391 staining (0.5 μ g/ml) of human brain lysate (RIPA buffer, 35 μ g total protein per lane). Primary incubated for 1 hour. Detected by western blot using chemiluminescence.