



## UK Office

### Everest Biotech Ltd

Cherwell Innovation Centre  
77 Heyford Park  
Upper Heyford  
Oxfordshire  
OX25 5HD  
UK

Enquiries:

[info@everestbiotech.com](mailto:info@everestbiotech.com)

Sales:

[sales@everestbiotech.com](mailto:sales@everestbiotech.com)

Tech support:

[support@everestbiotech.com](mailto:support@everestbiotech.com)

Tel: +44 (0)1869 238326

[www.everestbiotech.com](http://www.everestbiotech.com)

**Research Use Only. Not for  
diagnostic or therapeutic use.**

## EB12836 - Goat Anti-CPN10 / HSPE1 (aa74-86) Antibody

Size: 100µg specific antibody in 200µl



### Target Protein

**Principal Names:** HSPE1, heat shock 10kDa protein 1, CPN10, EPF, GROES, HSP10, 10 kDa chaperonin, 10 kDa heat shock protein, mitochondrial, chaperonin 10, early-pregnancy factor, heat shock 10kD protein 1 (chaperonin 10)

**Official Symbol:** HSPE1

**Accession Number(s):** NP\_002148.1

**Human GeneID(s):** [3336](#)

**Non-Human GeneID(s):** 15528 (mouse)

### Immunogen

Peptide with sequence C-PEYGGTKVVLDDK, from the internal region of the protein sequence according to NP\_002148.1.

Please note the [peptide](#) is available for sale.

### Purification and Storage

Purified from goat serum by ammonium sulphate precipitation followed by antigen affinity chromatography using the immunizing peptide.

Supplied at 0.5 mg/ml in Tris saline, 0.02% sodium azide, pH7.3 with 0.5% bovine serum albumin.

Aliquot and store at -20°C. Minimize freezing and thawing.

### Applications Tested

**Peptide ELISA:** antibody detection limit dilution 1:128000.

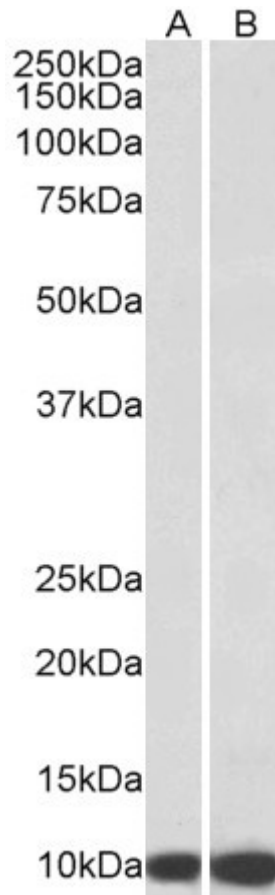
**Western blot:** Approx 10kDa band observed in lysates of cell lines HeLa and HepG2 (calculated MW of 10.9kDa according to NP\_002148.1). Recommended concentration: 0.1-0.3µg/ml.

**IHC:** Paraffin embedded Human Adrenal Gland. Recommended concentration: 5µg/ml.

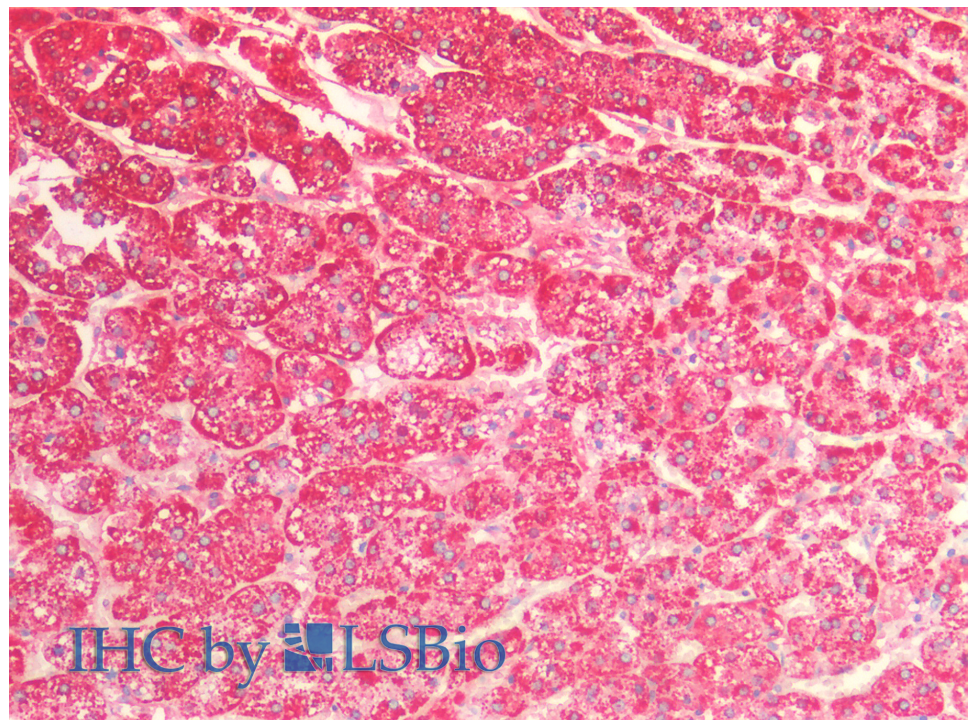
### Species Reactivity

**Tested:** Human

**Expected from sequence similarity:** Human, Mouse, Dog, Pig, Cow



EB12836 (0.3 $\mu$ g/ml) staining of HeLa (A) and HepG2 (B) lysates (35 $\mu$ g protein in RIPA buffer). Primary incubation was 1 hour. Detected by chemiluminescence.



EB12836 (5 $\mu$ g/ml) staining of paraffin embedded Human Adrenal Gland. Steamed antigen retrieval with citrate buffer pH 6, AP-staining.