



UK Office

Everest Biotech Ltd

Cherwell Innovation Centre
77 Heyford Park
Upper Heyford
Oxfordshire
OX25 5HD
UK

Enquiries:

info@everestbiotech.com

Sales:

sales@everestbiotech.com

Tech support:

support@everestbiotech.com

Tel: +44 (0)1869 238326

www.everestbiotech.com

**Research Use Only. Not for
diagnostic or therapeutic use.**

EB12835 - Goat Anti-CPN10 / HSPE1 Antibody

Size: 100µg specific antibody in 200µl



Target Protein

Principal Names: HSPE1, heat shock 10kDa protein 1, CPN10, EPF, GROES, HSP10, 10 kDa chaperonin, 10 kDa heat shock protein, mitochondrial, chaperonin 10, early-pregnancy factor, heat shock 10kD protein 1 (chaperonin 10)

Official Symbol: HSPE1

Accession Number(s): NP_002148.1

Human GeneID(s): [3336](#) , [100529241](#)

Non-Human GeneID(s): 15528 (mouse), 25462 (rat)

Immunogen

Peptide with sequence C-PEKSQ GKVLQAT, from the internal region of the protein sequence according to NP_002148.1.

Please note the [peptide](#) is available for sale.

Purification and Storage

Purified from goat serum by ammonium sulphate precipitation followed by antigen affinity chromatography using the immunizing peptide.

Supplied at 0.5 mg/ml in Tris saline, 0.02% sodium azide, pH7.3 with 0.5% bovine serum albumin.

Aliquot and store at -20°C. Minimize freezing and thawing.

Applications Tested

Peptide ELISA: antibody detection limit dilution 1:128000.

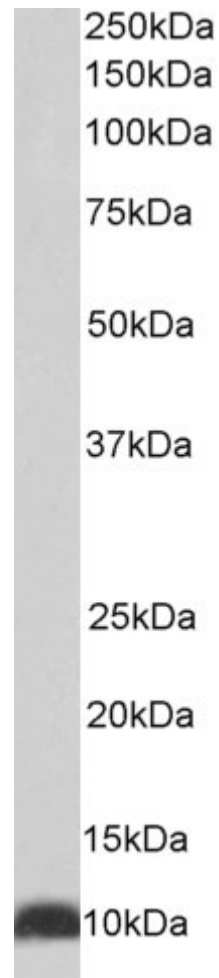
Western blot: Approx 10kDa band observed in lysates of cell line HepG2 (calculated MW of 10.9kDa according to NP_002148.1). Recommended concentration: 0.01-0.03µg/ml.

IHC: Paraffin embedded Human Liver. Recommended concentration: 5µg/ml.

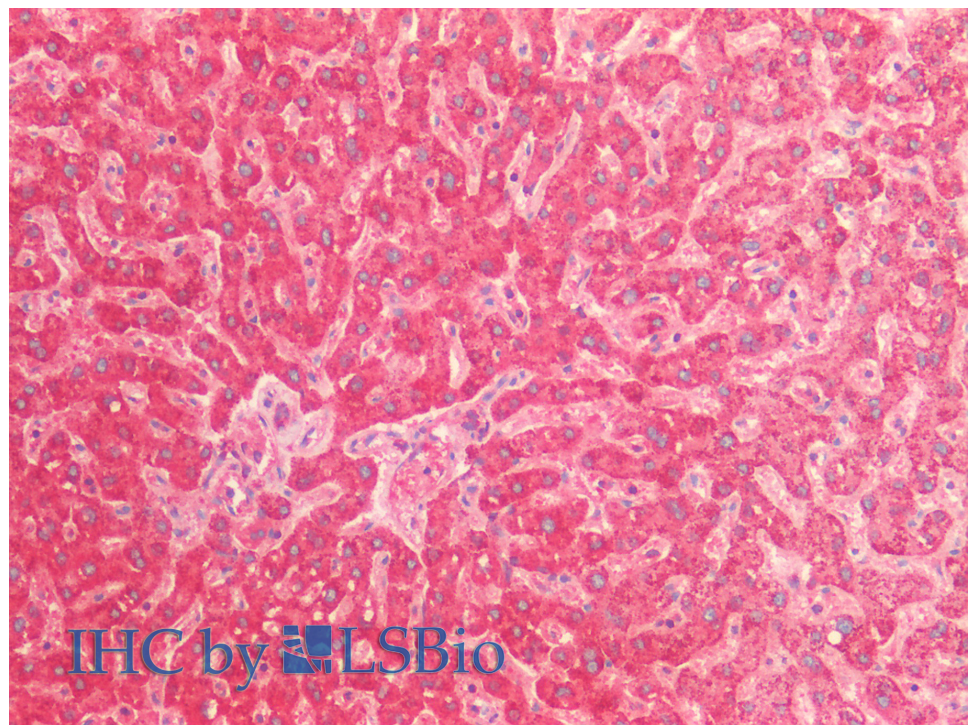
Species Reactivity

Tested: Human

Expected from sequence similarity: Human, Mouse, Rat, Dog, Pig, Cow



EB12835 (0.01 μ g/ml) staining of HepG2 lysate (35 μ g protein in RIPA buffer). Primary incubation was 1 hour. Detected by chemiluminescence.



EB12835 (5 μ g/ml) staining of paraffin embedded Human Liver. Steamed antigen retrieval with citrate buffer Ph 6, AP-staining.