



Everest Biotech Ltd
Cherwell Innovation Centre
77 Heyford Park
Upper Heyford
Oxfordshire
OX25 5HD, United Kingdom

everestbiotech.com

sales@everestbiotech.com

support@everestbiotech.com

Tel +44 1869 238326

Fax +44 1869 238327

Research Use Only. Not for diagnostic or therapeutic use.

Storage: For long-term storage keep aliquots at -20°C. (Store no longer than 12 months at 4°C). Minimize freezing and thawing.

EB07419 - Goat Anti-CPT1A Antibody

Size: 100µg specific antibody in 200µl



Target Protein

Principal Names: carnitine palmitoyltransferase I, liver, carnitine palmitoyltransferase I, carnitine palmitoyltransferase 1A, L-CPT1, CPT1-L, CPT1, carnitine palmitoyltransferase 1A (liver), CPT1A

Official Symbol: CPT1A

Accession Number(s): NP_001867.2; NP_001027017.1

Human GeneID(s): [1374](#)

Important Comments: This antibody is expected to recognize both reported isoforms (NP_001867.2; NP_001027017.1) but is not expected to recognise CPT1B.

Immunogen

Peptide with sequence C-DPAQTVEQRLKLFK, from the internal region of the protein sequence according to NP_001867.2; NP_001027017.1.

Please note the [peptide](#) is available for sale.

Purification and Storage

Purified from goat serum by ammonium sulphate precipitation followed by antigen affinity chromatography using the immunizing peptide.

Supplied at 0.5 mg/ml in Tris saline, 0.02% sodium azide, pH7.3 with 0.5% bovine serum albumin.

Aliquot and store at -20°C. Minimize freezing and thawing.

Applications Tested

Peptide ELISA: antibody detection limit dilution 1:128000.

Western blot: Approx 80kDa band observed in human liver lysates (calculated MW of 86.2kDa according to NP_001027017.1). Recommended concentration: 0.1-0.3µg/ml.

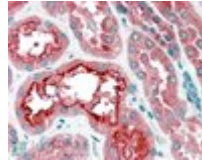
IHC: In paraffin embedded Human Kidney shows mitochondrial staining in PCT.

Recommended concentration, 4-6µg/ml.

Species Reactivity

Tested: Human

Expected from sequence similarity: Human



EB07419 (4 μ g/ml) staining of paraffin embedded Human Kidney. Steamed antigen retrieval with citrate buffer pH 6, AP-staining.



EB07419 (0.1 μ g/ml) staining of human liver lysate (35 μ g protein in RIPA buffer). Primary incubation was 1 hour. Detected by chemiluminescence.