



## UK Office

### Everest Biotech Ltd

Cherwell Innovation Centre  
77 Heyford Park  
Upper Heyford  
Oxfordshire  
OX25 5HD  
UK

Enquiries:

[info@everestbiotech.com](mailto:info@everestbiotech.com)

Sales:

[sales@everestbiotech.com](mailto:sales@everestbiotech.com)

Tech support:

[support@everestbiotech.com](mailto:support@everestbiotech.com)

Tel: +44 (0)1869 238326

Fax: +44 (0)1869 238327

## US Office

### Everest Biotech c/o Abcore

405 Maple Street, Suite A106  
Ramona,  
CA 92065  
USA

Inquiries:

[info@everestbiotech.com](mailto:info@everestbiotech.com)

Sales:

[usasales@everestbiotech.com](mailto:usasales@everestbiotech.com)

Tech support:

[support@everestbiotech.com](mailto:support@everestbiotech.com)

Tel: 888-320-4628 (toll-free)

Fax: 888-841-9041

[www.everestbiotech.com](http://www.everestbiotech.com)

**Research Use Only. Not for  
diagnostic or therapeutic use.**

## EB05488 - Goat Anti-CPT1B (isoform 1) Antibody

Size: 100µg specific antibody in 200µl



### Target Protein

**Principal Names:** CPT1B, carnitine palmitoyltransferase I, muscle, carnitine palmitoyltransferase 1B (muscle), CPT1-M, M-CPT1, KIAA1670, CPTI, muscle, carnitine O-palmitoyltransferase I, mitochondrial muscle isoform, carnitine palmitoyltransferase 1A (muscle), carnitine palmitoyltransferase 1B, carnitine palmitoyltransferase 1B (muscle), CPT1M, FLJ55729, FLJ58750, MCCPT1, MCPT1, carnitine palmitoyltransferase I-like

**Official Symbol:** CPT1B

**Accession Number(s):** NP\_689452.1; NP\_689451.1; NP\_004368.1; NP\_001138609.1; NP\_001138607.1; NP\_001138606.1; NP\_001138608.1

**Human GeneID(s):** [1375](#)

**Important Comments:** This antibody is expected to recognise human isoforms a (NP\_689452.1; NP\_689451.1; NP\_004368.1; NP\_001138609.1; NP\_001138607.1), isoform c (NP\_001138606.1) and isoform d (NP\_001138608.1).

### Immunogen

Peptide with sequence C-DIADLFQVPKAYS, from the C Terminus of the protein sequence according to NP\_689452.1; NP\_689451.1; NP\_004368.1; NP\_001138609.1; NP\_001138607.1; NP\_001138606.1; NP\_001138608.1.

Please note the [peptide](#) is available for sale.

### Purification and Storage

Purified from goat serum by ammonium sulphate precipitation followed by antigen affinity chromatography using the immunizing peptide.

Supplied at 0.5 mg/ml in Tris saline, 0.02% sodium azide, pH7.3 with 0.5% bovine serum albumin.

Aliquot and store at -20°C. Minimize freezing and thawing.

### Applications Tested

**Peptide ELISA:** antibody detection limit dilution 1:16000.

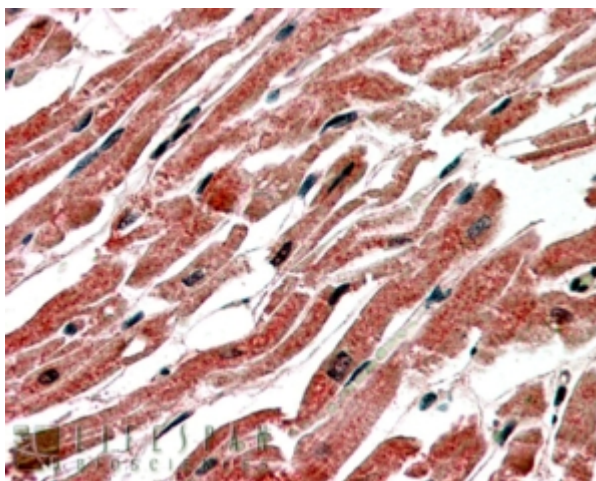
**Western blot:** Preliminary experiments gave no signal but low background in human kidney and HepG2 lysates at up to 1µg/ml. We would appreciate any feedback from people in the field - have any results been reported with other antibodies/lysates?

**IHC:** In paraffin embedded Human Heart shows staining of myocardial fibres in longitudinal section. Recommended concentration, 3-5µg/ml.

### Species Reactivity

**Tested:** Human

**Expected from sequence similarity:** Human



EB05488 (3.8µg/ml) staining of paraffin embedded Human Heart. Steamed antigen retrieval with citrate buffer pH 6, AP-staining.