



UK Office

Everest Biotech Ltd

Cherwell Innovation Centre
77 Heyford Park
Upper Heyford
Oxfordshire
OX25 5HD
UK

Enquiries:

info@everestbiotech.com

Sales:

sales@everestbiotech.com

Tech support:

support@everestbiotech.com

Tel: +44 (0)1869 238326

www.everestbiotech.com

**Research Use Only. Not for
diagnostic or therapeutic use.**

EB09736 - Goat Anti-CPT2 (aa141-154) Antibody

Size: 100µg specific antibody in 200µl



Target Protein

Principal Names: CPT2, carnitine palmitoyltransferase II, CPT1, CPTASE, OTTHUMP00000010493, carnitine O-palmitoyltransferase

Official Symbol: CPT2

Accession Number(s): NP_000089.1

Human GeneID(s): [1376](#)

Immunogen

Peptide with sequence C-PKSEYNDQLTRATN, from the internal region of the protein sequence according to NP_000089.1.

Please note the [peptide](#) is available for sale.

Purification and Storage

Purified from goat serum by ammonium sulphate precipitation followed by antigen affinity chromatography using the immunizing peptide.

Supplied at 0.5 mg/ml in Tris saline, 0.02% sodium azide, pH7.3 with 0.5% bovine serum albumin.

Aliquot and store at -20°C. Minimize freezing and thawing.

Applications Tested

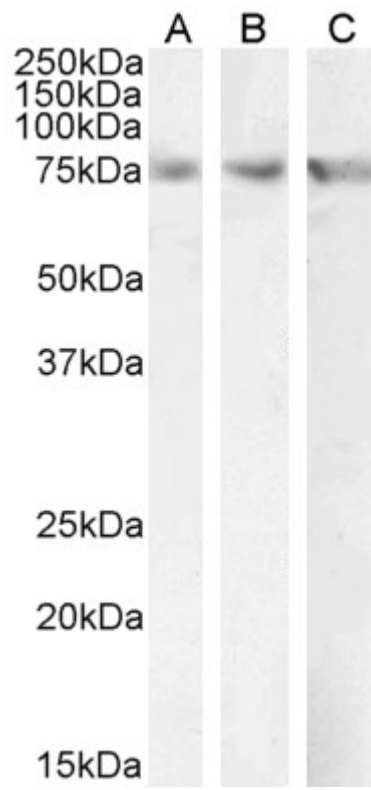
Peptide ELISA: antibody detection limit dilution 1:16000.

Western blot: Approx 75kDa band observed in Rat Heart and in Mouse Liver lysates and approx 70-75kDa doublet in Human Liver lysates (calculated MW of 73.8kDa according to Human NP_000089.1 and 74.0kDa according to Mouse NP_034079.2 and Rat NP_037062.1) An additional band of unknown identity was consistently observed at 25-27kDa in some Mouse and in Human Liver lysates and was successfully blocked by incubation with the immunizing peptide. Recommended concentration: 1-3µg/ml. Primary incubation 1 hour at room temperature.

Species Reactivity

Tested: Human, Mouse, Rat

Expected from sequence similarity: Human, Mouse, Rat, Dog, Cow, Pig



EB09736 (2 μ g/ml) staining of Human Liver (A), Mouse Liver (B) and (1 μ g/ml) on Rat Heart (C) lysate (35 μ g protein in RIPA buffer). Detected by Chemiluminescence.